

NAVY



HOPKINS



WRESTLING

Winter 2023



UNDER ARMOUR

THE ONLY WAY IS THROUGH.



VISION

TO INSPIRE YOU WITH PERFORMANCE
SOLUTIONS YOU NEVER KNEW
YOU NEEDED BUT CAN'T IMAGINE
LIVING WITHOUT.

MISSION

UNDER ARMOUR
MAKES YOU BETTER.

WRESTLING —

MEN'S/WOMEN'S/YOUTH

001 WRESTLING UNIFORMS

012 UNIFORM ORDERING INFO



WRESTLING ARMOURFUSE

- Brilliant, vibrant team colors permanently fused directly into textiles
- Limitless customization, all-inclusive pricing with exclusive UA designs and customized prints
- 37 different colors and 16 prints available



NEW

ARMOURFUSE® SINGLET

FIRST SHIP: 7/29/2023 // XS-2XL, OVERSIZE 3XL, YXS-YLG

REVERSAL 2.0	SIZE	PRICE
UW049SM (M)	XS-2XL	\$130.00
UW047SW (W)	XS-2XL	\$130.00
UW048SY (Y)	YXS-YLG	\$98.00

- Fully sublimated singlet
- Reflexx Armourvent engineered mesh back panel for breathability
- Light weight polyester/spandex for better fit and performance



PIN 2.0

BASE UNIFORM APPROVED FOR HS PLAY // OVERSIZED SURCHARGE +\$5 PER SIZE



ARMOURFUSE® UNIFORMS // ORDERING INFORMATION AND CUSTOMER SERVICE: 1-800-474-6118 // www.uacustomuniforms.com

FILL-IN LIFECYCLE TIMING FOUND ON PAGE 16. DECORATION OPTIONS AND ORDERING INFORMATION ARE AVAILABLE ON PAGES 12-16.

ARMOURFUSE® SINGLET

XS-2XL, OVERSIZE 3XL, YXS-YLG

REVERSAL 2.0	SIZE	PRICE
UW041SM (M)	XS-2XL	\$130.00
UW041SW (W)	XS-2XL	\$130.00
UW041SY (Y)	YXS-YLG	\$98.00

- Fully sublimated singlet
- Reflexx Armourvent engineered mesh back panel for breathability
- Light weight polyester/spandex for better fit and performance



REVERSAL 2.0

BASE UNIFORM APPROVED FOR HS PLAY // OVERSIZED SURCHARGE +\$5 PER SIZE



ARMOURFUSE® UNIFORMS // ORDERING INFORMATION AND CUSTOMER SERVICE: 1-800-474-6118 // www.uacustomuniforms.com

FILL-IN LIFECYCLE TIMING FOUND ON PAGE 16. DECORATION OPTIONS AND ORDERING INFORMATION ARE AVAILABLE ON PAGES 12-16.



ARMOURFUSE® SINGLET

XS-2XL, OVERSIZE 3XL, YXS-YLG

ESCAPE	SIZE	PRICE
UW038SM (M)	XS-2XL	\$137.00
UW038SW (W)	XS-2XL	\$137.00
UW038SY (Y)	YXS-YLG	\$105.00

- Fully sublimated singlet
- NEW lighter weight polyester/spandex for better fit and performance

4 print patterns available: Blur, Scale, Digi and Bengal.

To achieve a solid neck, armhole and bottom leg, choose one of the patterns and make both colors the same. Not the tonal color way of the print.



ESCAPE

BASE UNIFORM APPROVED FOR HS PLAY // OVERSIZED SURCHARGE +\$5 PER SIZE



ARMOURFUSE® UNIFORMS // ORDERING INFORMATION AND CUSTOMER SERVICE: 1-800-474-6118 // www.uacustomuniforms.com

FILL-IN LIFECYCLE TIMING FOUND ON PAGE 16. DECORATION OPTIONS AND ORDERING INFORMATION ARE AVAILABLE ON PAGES 12-16.

ARMOURFUSE® SINGLET

XS-2XL, OVERSIZE 3XL, YXS-YLG

WILDCAT 2.0	SIZE	PRICE
UW037SM (M)	XS-2XL	\$130.00
UW037SW (W)	XS-2XL	\$130.00
UW037SY (Y)	YXS-YLG	\$98.00

- Fully sublimated singlet
- NEW lighter weight polyester/spandex for better fit and performance



WILDCAT 2.0

BASE UNIFORM APPROVED FOR HS PLAY // OVERSIZED SURCHARGE +\$5 PER SIZE



ARMOURFUSE® UNIFORMS // ORDERING INFORMATION AND CUSTOMER SERVICE: 1-800-474-6118 // www.uacustomuniforms.com

FILL-IN LIFECYCLE TIMING FOUND ON PAGE 16. DECORATION OPTIONS AND ORDERING INFORMATION ARE AVAILABLE ON PAGES 12-16.

ARMOURFUSE® SINGLET

XS-2XL, OVERSIZE 3XL, YXS-YLG

BADGER	SIZE	PRICE
UW028SM (M)	XS-2XL	\$135.00
UW028SW (W)	XS-2XL	\$135.00
UW028SY (Y)	YXS-YLG	\$103.00

COWBOY	SIZE	PRICE
UW026SM (M)	XS-2XL	\$135.00
UW026SW (W)	XS-2XL	\$135.00
UW026SY (Y)	YXS-YLG	\$103.00

COYOTE	SIZE	PRICE
UW029SM (M)	XS-2XL	\$135.00
UW029SW (W)	XS-2XL	\$135.00
UW029SY (Y)	YXS-YLG	\$103.00

- Fully sublimated singlet
- Lightweight Polyester/Spandex for breathability and exceptional durability



BADGER

BASE UNIFORM APPROVED FOR HS PLAY // OVERSIZED SURCHARGE +\$5 PER SIZE



ARMOURFUSE® UNIFORMS // ORDERING INFORMATION AND CUSTOMER SERVICE: 1-800-474-6118 // www.uacustomuniforms.com

FILL-IN LIFECYCLE TIMING FOUND ON PAGE 16. DECORATION OPTIONS AND ORDERING INFORMATION ARE AVAILABLE ON PAGES 12-16.



COWBOY BACK VIEW



COWBOY



COYOTE

BASE UNIFORM APPROVED FOR HS PLAY // OVERSIZED SURCHARGE +\$5 PER SIZE



ARMOURFUSE® UNIFORMS // ORDERING INFORMATION AND CUSTOMER SERVICE: 1-800-474-6118 // www.uacustomuniforms.com

FILL-IN LIFECYCLE TIMING FOUND ON PAGE 16. DECORATION OPTIONS AND ORDERING INFORMATION ARE AVAILABLE ON PAGES 12-16.

ARMOURFUSE® SINGLET

XS-2XL, OVERSIZE 3XL, YXS-YLG

SPARTAN	SIZE	PRICE
UW017SM (M)	XS-2XL	\$135.00
UW017SW (W)	XS-2XL	\$135.00
UW017SY (Y)	YXS-YLG	\$103.00

TIGER	SIZE	PRICE
UW018SM (M)	XS-2XL	\$135.00
UW018SW (W)	XS-2XL	\$135.00
UW018SY (Y)	YXS-YLG	\$103.00

- Fully sublimated singlet
- Lightweight Polyester/Spandex for breathability, and exceptional durability
- Gripper at leg opening to lock singlet in place



SPARTAN

TIGER

BASE UNIFORM APPROVED FOR HS PLAY // OVERSIZED SURCHARGE +\$5 PER SIZE



ARMOURFUSE® UNIFORMS // ORDERING INFORMATION AND CUSTOMER SERVICE: 1-800-474-6118 // www.uacustomuniforms.com

FILL-IN LIFECYCLE TIMING FOUND ON PAGE 16. DECORATION OPTIONS AND ORDERING INFORMATION ARE AVAILABLE ON PAGES 12-16.

ARMOURFUSE® FIGHT SHIRT

XS-2XL, OVERSIZE 3XL, YSM-YLG

PIN	SIZE	PRICE
UW021JM (M)	XS-2XL	\$95.00
UW021JW (W)	XS-2XL	\$95.00
UW021JY (Y)	YSM-YLG	\$85.00
FREESTYLE	SIZE	PRICE
UW023JM (M)	XS-2XL	\$95.00
UW023JW (W)	XS-2XL	\$95.00
UW023JY (Y)	YSM-YLG	\$85.00

- Signature HeatGear 4-way stretch fabric
- 3" Drop Tail for 2-Piece regulation compliance



PIN BACK VIEW



PIN



FREESTYLE

ARMOURFUSE® FIGHT SHORT

SM-2XL, OVERSIZE 3XL, YSM-YLG

PIN	SIZE	PRICE
UW022FM (M)	SM-2XL	\$130.00
UW022FW (W)	XS-2XL	\$130.00
UW022FY (Y)	YSM-YLG	\$110.00
FREESTYLE	SIZE	PRICE
UW024FM (M)	SM-2XL	\$130.00
UW024FW (W)	XS-2XL	\$130.00
UW024FY (Y)	YSM-YLG	\$110.00

- Fully sublimated stretch woven fabric
- Gripper internal waistband to lock Fight Shirt in place
- 9" inseam

BASE UNIFORM APPROVED FOR HS PLAY // OVERSIZED SURCHARGE +\$5 PER SIZE



ARMOURFUSE® UNIFORMS // ORDERING INFORMATION AND CUSTOMER SERVICE: 1-800-474-6118 // www.uacustomuniforms.com

FILL-IN LIFECYCLE TIMING FOUND ON PAGE 16. DECORATION OPTIONS AND ORDERING INFORMATION ARE AVAILABLE ON PAGES 12-16.

ARMOURFUSE® FIGHT SHIRT

XS-2XL, OVERSIZE 3XL, YSM-YLG

BADGER	SIZE	PRICE
UW032JM (M)	XS-2XL	\$95.00
UW032JW (W)	XS-2XL	\$95.00
UW032JY (Y)	YSM-YLG	\$85.00

- Signature HeatGear 4-way stretch fabric
- 3" Drop Tail for 2-Piece regulation compliance

ARMOURFUSE® FIGHT SHORT

SM-2XL, OVERSIZE 3XL, YSM-YLG

BADGER	SIZE	PRICE
UW033FM (M)	SM-2XL	\$130.00
UW033FW (W)	SM-2XL	\$130.00
UW033FY (Y)	YSM-YLG	\$110.00

- Fully sublimated stretch woven fabric
- Gripper internal waistband to lock Fight Shirt in place



BADGER

BASE UNIFORM APPROVED FOR HS PLAY // OVERSIZED SURCHARGE +\$5 PER SIZE



ARMOURFUSE® UNIFORMS // ORDERING INFORMATION AND CUSTOMER SERVICE: 1-800-474-6118 // www.uacustomuniforms.com

FILL-IN LIFECYCLE TIMING FOUND ON PAGE 16. DECORATION OPTIONS AND ORDERING INFORMATION ARE AVAILABLE ON PAGES 12-16.

ARMOURFUSE® FIGHT SHIRT

XS-2XL, OVERSIZE 3XL, YSM-YLG

BASIC	SIZE	PRICE
UW025JM (M)	XS-2XL	\$95.00
UW025JW (W)	XS-2XL	\$95.00
UW025JY (Y)	YSM-YLG	\$85.00

- Signature HeatGear 4-way stretch fabric
- 3" Drop Tail for 2-Piece regulation compliance

ARMOURFUSE® FIGHT SHORT

SM-2XL, OVERSIZE 3XL, YSM-YLG

BASIC	SIZE	PRICE
UW001FM (M)	SM-2XL	\$130.00
UW036FW (W)	SM-2XL	\$130.00
UW001FY (Y)	YXS-YLG	\$110.00

- Fully sublimated stretch woven fabric with stretch mesh gusset for breathability
- Gripper internal waistband to lock your Fight Shirt in place



BASIC

FIGHT SHORT DESIGN SHOWN = UW001FM/T, UW001FY/T

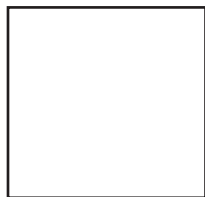
BASE UNIFORM APPROVED FOR HS PLAY // OVERSIZED SURCHARGE +\$5 PER SIZE



ARMOURFUSE® UNIFORMS // ORDERING INFORMATION AND CUSTOMER SERVICE: 1-800-474-6118 // www.uacustomuniforms.com

FILL-IN LIFECYCLE TIMING FOUND ON PAGE 16. DECORATION OPTIONS AND ORDERING INFORMATION ARE AVAILABLE ON PAGES 12-16.

ARMOUR FUSE



WHITE



BLACK



MIDNIGHT NAVY



UNIVERSITY RED



ROYAL



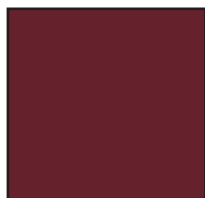
FOREST GREEN



TEAM KELLY GREEN



MAROON



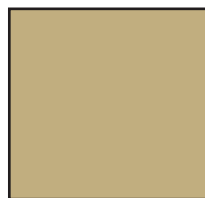
CARDINAL



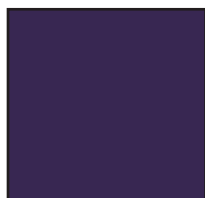
DARK ORANGE



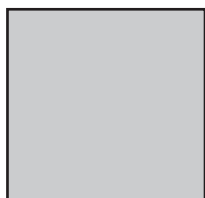
STEELTOWN GOLD



TEAM VEGAS GOLD



PURPLE



SILVER GRAY



GRAPHITE



CAROLINA BLUE



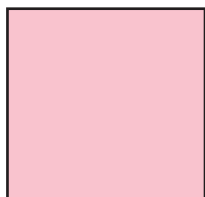
CLEVELAND BROWN



TEXAS ORANGE



COASTAL TEAL



PINK



POISON



CAPRI



TAXI



BASEBALL GRAY



OCEAN STORM



TENNESSEE ORANGE



GRAYSTONE



MIAMI TEAL



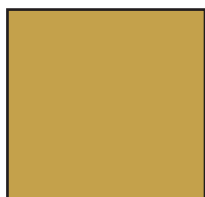
SEA GLASS



POWDERKEG BLUE



ELECTRIC BLUE



GOLD RUSH

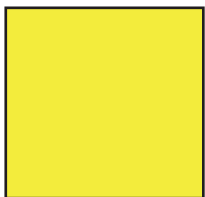


TROPIC PINK



PITCH GRAY **NEW**

FLUORESCENTS
NOT CURRENTLY AVAILABLE IN TONAL
PRINTS OR ON GAMEDAY SELECT PRODUCT



YELLOW FLUORESCENT



PINK FLUORESCENT

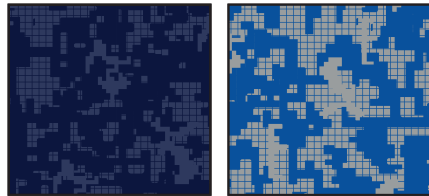


GREEN FLUORESCENT

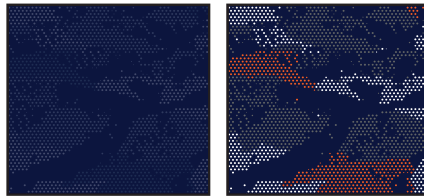


ORANGE FLUORESCENT

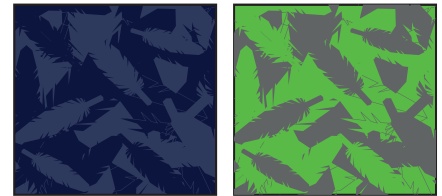
Prints available in all ArmourFuse colors. (Fluorescents not currently available in tonal prints)



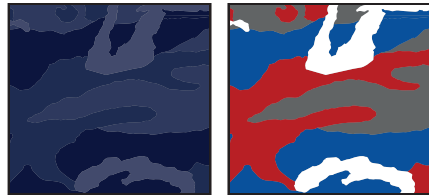
DIGITAL CAMO



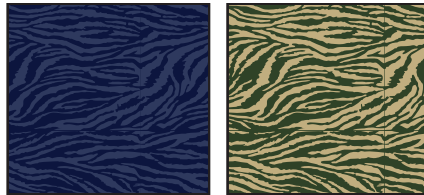
PIXEL CAMO



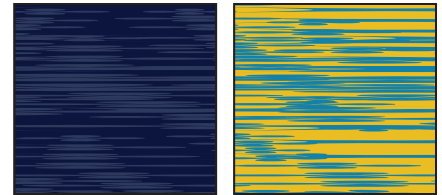
WINGS



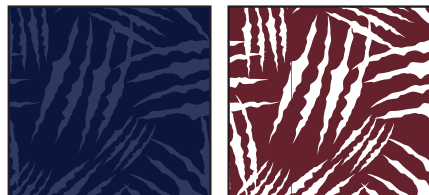
WOODLAND CAMO



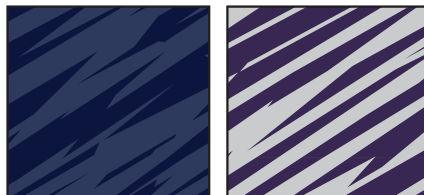
BENGAL



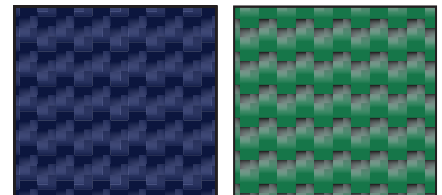
BLUR



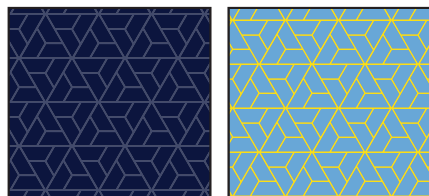
CLAW



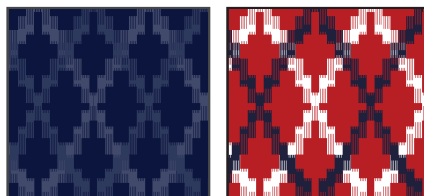
SPLINTER



CARBON WEAVE



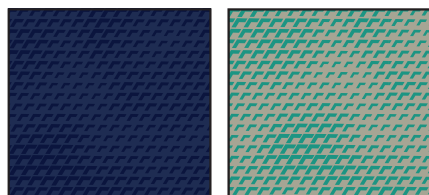
RAZOR



TOTEM

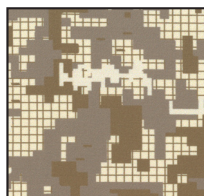


TREAD

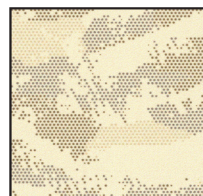


SCALE

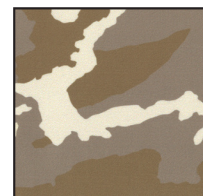
DESERT CAMO
LOCKED COLOR COMBINATIONS,
CANNOT BE ALTERED



DESERT
DIGITAL CAMO



DESERT
PIXEL CAMO



DESERT
WOODLAND CAMO

GAMEDAY SELECT OPTIONS

3/16" 1-COLOR PIPE



1/2" 3-COLOR BRAID

ANY COMBO
OF PIPE COLORS

INCLUDED PIPE/BRAID

1. Jersey Front

Around Neck

OR

Around Placket

OR

None

2. Jersey Sleeves

Sleeve Ends

OR

None

3. Pants

Down Side

OR

None

OPTIONAL PANT ALTERATIONS LIST PRICE

Reduce Knicker Inseam 2" and Hem w/ Elastic	\$0.00
Increase Knicker Inseam 2" and Hem w/ Elastic	\$0.00
Increase Knicker Inseam 4" and Hem w/ Elastic*	\$15.00
Reduce Relaxed/Tapered Inseam 2" and Hem	\$0.00
Increase Relaxed/Tapered Inseam 2" and Hem	\$0.00
Increase Relaxed/Tapered Inseam 4" and Hem*	\$15.00

OPTIONAL ARMOURFUSE® TWILL (L X H) LIST PRICE

Custom Font Team Name (Max. 14" x 4.25")	\$10.00
Custom Left Chest Team Logo (Max. 4" x 5")	\$15.00
Custom Sleeve Patch (Max. 4" x 4")	\$15.00
Custom Back Neck Patch (Max. 3" x 2")	\$15.00
Player Name (On Nameplate)	\$40.00
Player Name Directly on Jersey (No Nameplate)	\$30.00
Blank Nameplate	\$7.00
Add Tail to Script Font Team Name	\$20.00
Add Text to Script Font Tail	\$20.00

Note: Vector art must be provided for custom Armourfuse® Twill or additional artwork charges will apply

*Available on Men's styles only

FONT OPTIONS

BADGER

ABCDEFGHIJKLMNOPQRSTUVWXYZ
0123456789

COMBINE

ABCDEFGHIJKLMNOPQRSTUVWXYZ
0123456789

BEARCAT

ABCDEFGHIJKLMNOPQRSTUVWXYZ
0123456789

CADET

ABCDEFGHIJKLMNOPQRSTUVWXYZ
0123456789

HIGHLIGHT

ABCDEFGHIJKLMNOPQRSTUVWXYZ
0123456789

TERRAFONT

ABCDEFGHIJKLMNOPQRSTUVWXYZ
0123456789

PREMIER

ABCDEFGHIJKLMNOPQRSTUVWXYZ
0123456789

TIFFANY

ABCDEFGHIJKLMNOPQRSTUVWXYZ
0123456789

FULL BLOCK

ABCDEFGHIJKLMNOPQRSTUVWXYZ
0123456789

UNDENIABLE

ABCDEFGHIJKLMNOPQRSTUVWXYZ
0123456789

FALCON

ABCDEFGHIJKLMNOPQRSTUVWXYZ
0123456789

PLAIN BLOCK

ABCDEFGHIJKLMNOPQRSTUVWXYZ

ATHLETIC SCRIPT

ABCDEFGHIJKLMNOPQRSTUVWXYZ
abcdefghijklmnopqrstuvwxyz

CLASSIC SCRIPT

ABCDEFGHIJKLMNOPQRSTUVWXYZ
abcdefghijklmnopqrstuvwxyz

NOTE:

- Gameday Select Package Pricing now includes all of the above listed fonts
- Dropped fonts available for fill-in orders only

LETTERING ARRANGEMENTS

STRAIGHT

ARCHED

Athletic Script

BRIDGED

VERTICAL ARCH

Classic Script

EMBROIDERY

MASCOTS (STOCK ONLY)

	LIST PRICE
Mascot	\$11.00
Mascot with One Line	\$12.00
Mascot with Two Lines	\$13.00
American Flag	\$11.00
Small/Homeplate	\$6.00

DIGITIZING (STOCK AND ARMOURFUSE ONLY)

	LIST PRICE
Stock Designs and Lettering	\$180.00
Custom Logos	Call for Quote

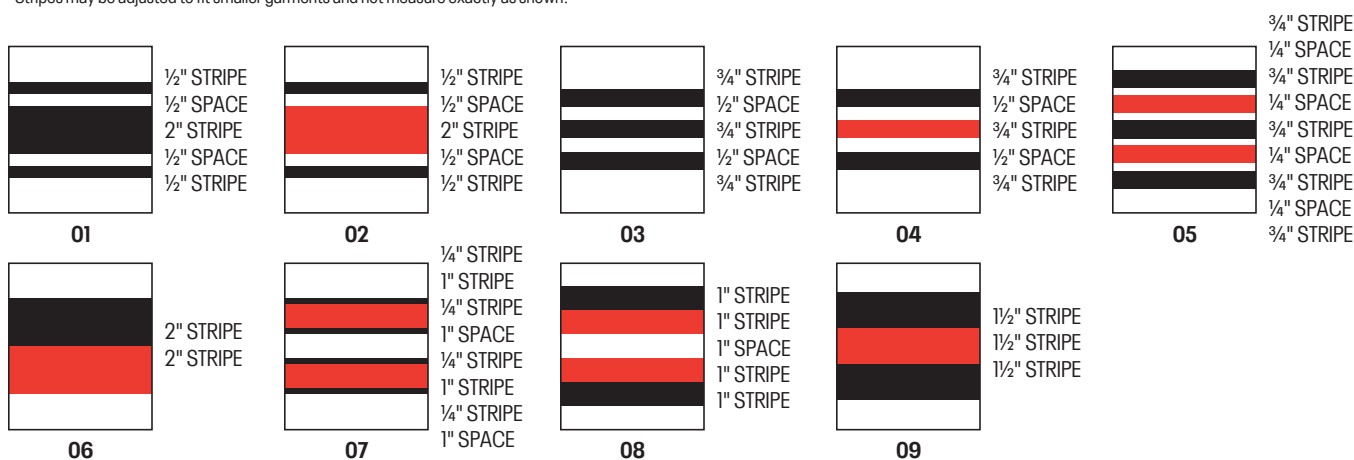
- Prices are based upon size of designs, not the number of colors. Prices are subject to change if design exceeds specifications.
- Dimensions are maximum space - unless specifically noted best judgement will be used.
- Letter styles are available horizontal or arched.
- No digitizing charge for team names.

- Flag size up to 2" by 3" (bigger area - call for quote)
- Minimum order charges apply for embroidery
- All designs require an additional digitizing charge, except:
 - 1) Digitized designs supplied on a disk
 - 2) Digitized design is a re-order of an existing design

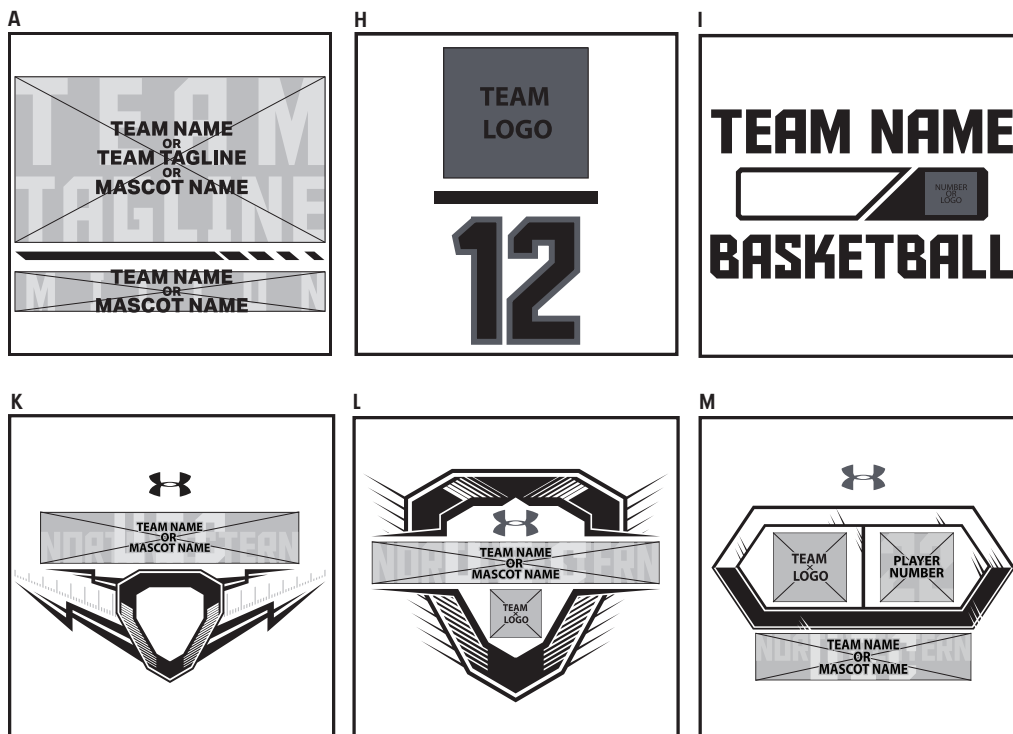
STANDARD SLEEVE PRINT STRIPES

*OPTIONS - Code numbers listed below stripe patterns

*Stripes may be adjusted to fit smaller garments and not measure exactly as shown.



ARMOURFUSE® GRAPHIC OPTIONS



UNIFORM CARE INSTRUCTIONS

To enhance the appearance and extend the life of your uniforms, Under Armour recommends that you follow these cleaning and storing procedures:

DO NOT DRY CLEAN

DO NOT WASH IN HOT WATER

DO NOT USE CHLORINE BLEACH

DO NOT USE FABRIC SOFTENER

DO NOT WASH WHITES AND COLORS TOGETHER

DO NOT OVERLOAD THE WASHING MACHINE

DO NOT MACHINE DRY ON HIGH HEAT

DO NOT LEAVE WET OR DAMP GARMENTS IN YOUR TRAVEL BAG, IN A PILE WITH OTHER CLOTHING OR IN WASHING MACHINE

- Pre wash uniform prior to use.
- Uniforms should always be laundered immediately after wearing. However, if this is not possible, rinse garments and hang individually on rust-proof hangers. (Moisture may cause color migration of acid dyes so we advise separating wet or damp uniforms.)
- Belts and any other contrasting color items should be washed separately from the garment.
- It is always advisable to test wash a single uniform according to directions before washing an entire load.
- Wash and rinse all garments in warm water (approx. 110°) with mild detergent. Remove promptly after wash cycle.
- For optimum results, hang garments (especially those with elastane) to dry. If you cannot hang dry, machine dry on the lowest setting. Turn jerseys inside out before machine drying. Remove items from dryer immediately upon completion of the cycle. (Excessive heat can cause fabric shrinkage, discoloration, and cracking and peeling of vinyl plastisol lettering inks.)
- Make sure uniforms are completely dry before storing. Store in a dry area to prevent mildew. Protect them from sunlight and fluorescent light to prevent yellowing.

PLEASE NOTE: Under Armour will not be responsible for uniforms that are damaged due to improper care and maintenance. Failure to follow our specified care instructions will void all guarantees.

UNIFORM FILL-IN LIFECYCLE

LAST SHOWN IN CATALOG	LAST FILL-IN SEASON	LAST FILL-IN SHIP
SP'20	SP'23	6/15/2023
FA'20	FA'23	12/15/2023
WI'20	WI'23	3/15/2024
SP'21	SP'24	6/15/2024
FA'21	FA'24	12/15/2024
WI'21	WI'24	3/15/2025
SP'22	SP'25	6/15/2025
FA'22	FA'25	12/15/2025
WI'22	WI'25	3/15/2026
SP'23	SP'26	6/15/2026
FA'23	FA'26	12/15/2026
WI'23	WI'26	3/15/2027


GAMEDAY SELECT TEAM UNIFORMS
 ORDERING INFORMATION AND CUSTOMER SERVICE:
 1-800-474-6118
www.uacustomuniforms.com


UA NEXT
 ORDERING INFORMATION AND CUSTOMER SERVICE:
 1-800-594-9082
www.underarmourteamuniforms.com


ARMOURFUSE™ TEAM UNIFORMS
 ORDERING INFORMATION AND CUSTOMER SERVICE:
 1-800-594-9082
www.underarmourteamuniforms.com


STOCK TEAM UNIFORMS
 ORDERING INFORMATION AND CUSTOMER SERVICE:
 1-800-594-9082
www.underarmourteamuniforms.com

ORDERING INFORMATION

Guarantee:

The materials and workmanship of our garments are guaranteed when given fair treatment and used under normal conditions.

Color Matching:

Scientifically, it is not possible to achieve a perfect color match from one dye lot to another. Therefore, we cannot guarantee a perfect match from order to order or from one fabric to another.

Color Abbreviation Key:

The following abbreviations may be used when ordering merchandise.

BG Baseball Gray	EB Electric Blue	PI Pink	SI Silver Grey
BK Black	GP Graphite	PK Powderkeg Blue	TI Taxi
BR Brown	KE Team Kelly Green	PO Poison	TE Teal
CA Cardinal	LG Steeltown Gold	PU Purple	TO Texas Orange
CB Carolina Blue	MA Maroon	RO Royal	TP Tropic Pink
CP Capri	NA Midnight Navy	RU Gold Rush	VG Team Vegas Gold
DG Forest Green	OR Dark Orange	SC University Red	WH White

Price Policy:

All catalog prices are list or suggested retail. Prices are subject to change without notice. Merchandise will be invoiced based on the prices in effect at the time the order is placed.

Terms:

Prices are FOB shipping point. Payment is due Net 30.

Minimum Order Charges:

A handling charge of \$10.00 will be added to orders of less than \$150.00 list. Custom and GamedaySelect fill-in minimum order is 6 units per style and color. A 100% surcharge will be applied to orders of 1-2 units, and a 50% surcharge for orders of 3-5 units.

Lettered Orders for COD Shipment:

A 50% deposit is required on all lettered orders calling for COD shipment.

Delivery:

Shipments will always be made by the fastest, least expensive means possible. The customer will assume any additional expense required to expedite delivery.

Order Cancellations:

Cancellations must be received at least one day prior to the ship date. Special order garments cannot be cancelled after they have been cut. Lettered garments cannot be cancelled after they have been printed or sewn.

Returns:

Claims must be reported to our office within 10 working days of merchandise receipt. Returns cannot be made after 30 days of the invoice date. All returns for plain merchandise must be clearly marked with an authorization number or label obtained from our office. All returns for lettered merchandise must be clearly marked "LETTERING." When requesting an authorization label, the following information is required: Reason for return, Invoice #, Style #, Color, Size/Quantity. An authorization label will then be sent to you to prepare the merchandise for return shipment. We reserve the right to repair, replace or issue credit for any merchandise returned. A 15% restocking fee and shipping charges will be charged for merchandise returned that is either not damaged or the damage is determined not to be our fault. All worn garments must be properly laundered prior to return or they will not be accepted.

All custom and custom-stock uniforms may not be returned under any circumstances if delivered properly.

Shortages:

All claims must be made within 10 days of the invoice date.

New Accounts:

All new accounts must be opened through your local sales representative. New accounts that do not have a Dunn and Bradstreet rating will be shipped COD until a credit line has been established.

Samples:

Samples will be entered and billed as a regular order. Samples cannot be returned without prior approval from our office.

Imprint Orders:

All imprint orders must be emailed, mailed or faxed in with detailed instructions on UA order forms. Imprint orders will not be taken by phone. Once garments have been lettered, the order cannot be cancelled or returned.

Under Armour will not be responsible for any items not checked for order accuracy or sizing before being sent to a printer / screener. We will not be responsible for shrinkage, defects, or damages caused during the imprinting of our garments by sources other than our own lettering department. Screenprinting sublimated uniforms can cause color migration. We do not recommend screenprinting on sublimated garments.

Photography is the property of Under Armour and is not to be used without written authorization.

This image shows a single sheet of white paper with horizontal ruling lines. The lines are evenly spaced and run across the width of the page. There are no margins, text, or other markings on the paper.

COMPRESSION



Ultra-tight, second skin fit that keeps you locked in & makes you feel like you can do anything.

FITTED



A slimmer, athletic cut that allows total mobility but eliminates the bulk of extra fabric.

LOOSE



Fuller cut for complete comfort, total range of motion & greater breathability.

MEN'S

	US SIZE	CHEST (IN)	WAIST (IN)	HIP (IN)
SM	26-28	34-37	29-31	34-36
MD	30-32	37-41	31-34	36-39
LG	34-36	41-44	34-37	39-42
XL	38-40	44-48	37-41	42-46
2XL	42-44	48-52	41-45.5	46-50
3XL	46-48	52-56	45.5-50	50-54
4XL	50-52	56-60	50-54.5	54-58
5XL	54-56	60-64	54.5-59	58-62

HOW TO MEASURE



CHEST: Place the tape measure under your arms at the fullest part of your chest, wrap around your body until your fingers meet and mark the measurement

WAIST: Measure around your natural waistline – right above your hips. Be careful not to squeeze too tight to allow a little give.

HIPS: With your feet together, measure around the fullest part of your hips to ensure you'll have enough room to move comfortably.

BOYS

FITTED



A slimmer, athletic cut that allows total mobility but eliminates the bulk of extra fabric.

LOOSE



Fuller cut for complete comfort, total range of motion & greater breathability.

	US SIZE	CHEST (IN)	WAIST (IN)	HIP (IN)
YXS	7	25-26	23-24	26-27
YSM	8	26-27	24-25	27-28
YMD	10-12	27-29	25-27	28-31
YLG	14-16	29-32.5	27-30	31-34
YXL	18-20	32.5-35.5	30-33	34-37

HOW TO MEASURE



CHEST: Place the tape measure under your arms at the fullest part of your chest, wrap around your body until your fingers meet and mark the measurement

WAIST: Measure around your natural waistline – right above your hips. Be careful not to squeeze too tight to allow a little give.

HIPS: With your feet together, measure around the fullest part of your hips to ensure you'll have enough room to move comfortably.

WOMEN'S

COMPRESSION



Ultra-tight, second skin fit that keeps you locked in & makes you feel like you can do anything.

FITTED



Sits close to the skin for a streamlined fit without the squeeze of compression.

LOOSE



Fuller, more generous cut for enhanced range of motion & an effortlessly relaxed fit.

	US SIZE	CHEST (IN)	WAIST (IN)	HIP (IN)
XS	0-2	32.5-33.5	25.5-27	34.5-36
S	4-6	33.5-36	27-29	36-38
M	8-10	36-38	29-31	38-40
L	12-14	38-41	31-34	40-43
XL	16	41-44	34-37	43-46
2XL	18	44-47	37-40	46-49
3XL	20	47-50	40-43	49-52
4XL	22	50-53	43-46	52-55

HOW TO MEASURE



CHEST: Place the tape measure under your arms at the fullest part of your chest, wrap around your body until your fingers meet and mark the measurement

WAIST: Measure around your natural waistline – right above your hips. Be careful not to squeeze too tight to allow a little give.

HIPS: With your feet together, measure around the fullest part of your hips to ensure you'll have enough room to move comfortably.

GIRLS

FITTED



Sits close to the skin for a streamlined fit without the squeeze of compression.

LOOSE



Fuller, more generous cut for enhanced range of motion & an effortlessly relaxed fit.

	US SIZE	CHEST (IN)	WAIST (IN)	HIP (IN)
YXS	7	25-26.5	23-24	26-28
YSM	8	26.5-27.5	24-24.5	28-29
YMD	10-12	27.5-30.5	24.5-26.5	29-32.5
YLG	14-16	30.5-34	26.5-30.5	32.5-36.5
YXL	18-20	34-36	30.5-32.5	36.5-38.5

HOW TO MEASURE



CHEST: Place the tape measure under your arms at the fullest part of your chest, wrap around your body until your fingers meet and mark the measurement

WAIST: Measure around your natural waistline – right above your hips. Be careful not to squeeze too tight to allow a little give.

HIPS: With your feet together, measure around the fullest part of your hips to ensure you'll have enough room to move comfortably.

WEST

PAT BAUER
SR. REGIONAL MANAGER
410.299.3798
pbauer@underarmour.com
WA // OR // MT // ID // AK

JEFF UTTZ
626.484.3496
jeffu@underarmour.com
Southern & Central CA //
Southern NV // HI

MARC GUSTAFSON
303.828.7468
mgustafson@underarmour.com
UT // CO // WY //
Western KS // Western NE

MATT VALENTINE
415.307.1290
mvalentine@underarmour.com
Northern CA // NV

DAN LAABES
602.882.7241
dlaabes@underarmour.com
AZ // NM // West & South TX

GREG ROMINE
719.238.9244
gromine@underarmour.com
North & East TX // OK // Western AR

CENTRAL

BROCK PAALHAR
SR. REGIONAL MANAGER
573.808.1010
bpaalhar@underarmour.com
IA // MN // ND // SD

TONY DONOFRIO
419.356.9742
tonyd@underarmour.com
Northern IN // Northern OH //
MI // Western PA

FRANK WEBER
618.540.3955
fweber@underarmour.com
MO // Central & Eastern NE //
Southern IL // Eastern KS

JOHN WACHTEL
513.314.4024
jwachtel@underarmour.com
Southern IN // Southern OH // KY
Eastern TN // WV

MONTÉ GIBBS
662.801.3039
mgibbs@underarmour.com
Central & Western TN //
Panhandle FL //
LA // AL // MS // Eastern AR

EAST

FRANK NUNAN
SR. REGIONAL MANAGER
484.576.9777
fnunan@underarmour.com
DE // NJ // Philadelphia area

DAN WILLIAMS
352.672.1676
dwilliams@underarmour.com
FL (except Panhandle)

ALEX BRUEGGEMANN
410.652.4337
abrueggemann@underarmour.com
GA // SC // NC

GARY POWERS
410.746.3790
gpowers@underarmour.com
MD // VA // Washington DC

BOB BARTLETT
315.380.6505
bobb@underarmour.com
NY // Lax Specialty

JAY KELLEHER
443.615.0462
jkelleher@underarmour.com
New England

COLLEGIATE

TOMMY AMICO
951.808.0367
tamico@underarmour.com
WEST

TODD LOCKLEAR
410.454.6572
tlocklear@underarmour.com
EAST

CHRIS PORTS
443.220.1009
cports@underarmour.com
MID ATLANTIC

BELLA GARONE
631.307.0009
isabella.garone@underarmour.com
NORTHEAST

LICENSEES

POWERS ATHLETIC
Custom Uniforms
www.uacustomuniforms.com
800.474.6118
customerservice@powersathletic.com



TEL: 1.888.828.1547 / B2B: ARMOURHOUSE.UNDERARMOUR.COM

COLLEGIATE

TEAMSPO RTS COLLEGIATE / TEAMSPO RTS.COLLEGIATE@UNDERARMOUR.COM

CENTRAL

TEAM SPORTS MW / TEAMSPORTSMW@UNDERARMOUR.COM

EAST

TEAM SPORTS SE / TEAMSPORTSSE@UNDERARMOUR.COM
TEAM SPORTS NE / TEAMSPORTSNE@UNDERARMOUR.COM

WEST

TEAM SPORTS WC / TEAMSPORTSWC@UNDERARMOUR.COM
TEAM SPORTS SW / TEAMSPORTSSW@UNDERARMOUR.COM

ALL TEAM SPORTS ORDERS AND QUESTIONS PLEASE USE THE FOLLOWING:

1.888.828.1547
Corporate Headquarters
1020 Hull Street
Baltimore, MD 21230

CORPORATE OFFICE HOURS OF OPERATION

Monday through Friday, 8:30am – 5:30pm, EST.

UNDER ARMOUR® B2B – ONLINE ORDERING

armourhouse.underarmour.com

- 24/7 access to check inventory and place orders
- Ability to track orders and shipments
- Priority product allocation
- Faster processing time

UNDER ARMOUR® B2B – SUPPORT

B2B_support@underarmour.com

UNDER ARMOUR® RETURN POLICY

Under Armour® stands behind its gear and EXPECTS nothing less than perfection. If you have received a defective product, an incorrect size, or an incorrect order, please contact us immediately for a return authorization number so that we can quickly process your return and ensure your satisfaction.

ALL RETURNS MUST BE COMPLETED WITHIN 30 DAYS OF RECEIPT AND MUST BE IN REASONABLE CONDITION. ALL RETURNS MUST HAVE THE RA# CLEARLY MARKED ON THE CARTON. ALL RETURNS ARE SUBJECT TO A 15% RE-STOCKING FEE.

Should you need to return or exchange an item, you MUST include your RA#, a copy of your invoice, and an explanation in writing as to why you are returning the item. Send your return to the marked address on your pack list. If you are exchanging merchandise, you are responsible for the cost of returning the product. Original shipping costs are non-refundable. All returned merchandise must be received in new, resalable condition.

ODH RETURNS:

Under Armour Returns
RA#
7030 Tradepoint Ave
Dock Door 69
Sparrows Point, MD 21219

RIALTO RETURNS:

Under Armour Returns
RA#
2510 W Walnut Ave
Rialto, CA 92376

NASHVILLE RETURNS:

Under Armour Returns
RA#
13 Athlete's Way
Mt Juliet, TN 37122

UNDER ARMOUR® CANCELLATION POLICY

Any request for cancellation of an order for UA products must be made, in writing, through the customer's UA Sales Representative. A request to cancel an order must be made more than 30 days before the customer's original desired ship date. All cancellations are subject to UA approval.

ALL PRICES SET FORTH HEREIN ARE SUBJECT TO CHANGE WITHOUT NOTICE.

© 2023 Under Armour®. All rights reserved. All trademarks, images, photographs, logos, and graphics are owned or controlled by Under Armour®.

Confidential and business proprietary information for internal Under Armour®, Inc. use only. Reproduction is strictly prohibited.

UNDER ARMOUR® PERFORMANCE
WINTER 2023