



# VOLLEYBALL

Fall 2024



UNDER ARMOUR

# THE ONLY WAY IS THROUGH.



## VISION

TO INSPIRE YOU WITH PERFORMANCE  
SOLUTIONS YOU NEVER KNEW  
YOU NEEDED BUT CAN'T IMAGINE  
LIVING WITHOUT.

## MISSION

UNDER ARMOUR  
MAKES YOU BETTER.





## VOLLEYBALL

- 002 W'S VOLLEYBALL UNIFORMS
- 012 W'S VOLLEYBALL APPAREL
- 016 W'S VOLLEYBALL PROTECTIVE
- 017 W'S VOLLEYBALL FOOTWEAR
- 018 VOLLEYBALL SOCKS
- 020 M'S VOLLEYBALL UNIFORMS
- 024 MEN'S AF TRAINING
- 034 WOMEN'S AF TRAINING
- 040 UNIFORM ORDERING INFO



# WOMEN'S VOLLEYBALL ARMOURFUSE

- Brilliant, vibrant team colors permanently fused directly into textiles
- Limitless customization, all-inclusive pricing with exclusive UA designs and customized prints
- 37 different colors and 16 prints available
- 6 piece minimum order





**NEW**

## SHOWTIME LONGSLEEVE JERSEY

FIRST SHIP: 6/1/2024 // XS-2XL, OVERSIZE 3XL

STYLE	SIZE	PRICE
UJVIS2W (W)	XS-2XL	\$106.50

- Lightweight, 4-way stretch performance fabric through the body
- Mesh fabric through the back and shoulder panels for increased breathability
- Fitted silhouette that doesn't sacrifice range of motion through the arms and chest
- Two-ply construction to provide durability through the arms

OVERSIZED SURCHARGE +\$5 PER SIZE  
ALL BASE JERSEY DESIGN IS APPROVED FOR HS/COLLEGIATE PLAY



**NEW**

## SHOWTIME SHORTSLEEVE JERSEY

FIRST SHIP: 6/1/2024 // XS-2XL, OVERSIZE 3XL

STYLE	SIZE	PRICE
UJVISW (W)	XS-2XL	\$101.00

- Lightweight, 4-way stretch performance fabric through the body
- Mesh fabric through the back and shoulder panels for increased breathability
- Fitted silhouette that doesn't sacrifice range of motion through the arms and chest
- Modern high low hem construction

OVERSIZED SURCHARGE +\$5 PER SIZE  
ALL BASE JERSEY DESIGN IS APPROVED FOR HS/COLLEGIATE PLAY



## SHOWTIME SLEEVELESS JERSEY

XS-2XL, OVERSIZE 3XL, YSM-YLG

STYLE	SIZE	PRICE
UJVISLW (W)	XS-2XL	\$90.00
UJVISLG (G)	YSM-YLG	\$80.50

- Signature HeatGear® fabrication with 4-way stretch
- Mesh back panel for added breathability
- Double side seam panel for more tapered body fit
- Adult tall (+2") option available - applies to body and sleeve length
- Bomber inspired V-Neck collar

OVERSIZED SURCHARGE +\$5 PER SIZE  
ALL BASE JERSEY DESIGN IS APPROVED FOR HS/COLLEGIATE PLAY



ACE





SET

BLOCK

**NEW**

# ARMOURFUSE SLEEVE

FIRST SHIP: 6/1/2024  
 SINGLE PAIR | XXS-2XL, OVERSIZE 3XL, 4XL

STYLE	SIZE	PRICE
UUVXS1W (W)	XXS-2XL	\$40.00

- 2-Ply performance stretch fabric
- Compression fit

OVERSIZED SURCHARGE +\$5 PER SIZE  
 ALL BASE JERSEY DESIGN IS APPROVED FOR HS/COLLEGIATE PLAY





## AF LINE SHOT SHORT 3.0

XS-2XL, OVERSIZE 3XL, YSM-YLG

4" SHORT	SIZE	PRICE
UJVS3W (W)	XS-2XL	\$67.00
UJVS3G (G)	YSM-YLG	\$62.00
3" SHORT	SIZE	PRICE
UJVS6W (W)	XS-2XL	\$67.00

- Lightweight, 4-Way stretch fabrication improves range of motion and dries faster
- Smooth flatlock seams prevent chafing
- 4" and 3" inseam available, Girls only available in 4"
- Sublimated Back Wasteband, Options to add team name, team logo

BLK GPH MDN RED RYL

OVERSIZED SURCHARGE +\$5 PER SIZE



TRIBLOCK



MOTO BLOCK



REBEL

## GAMETIME LONGSLEEVE JERSEYS

XS-2XL, YSM-YLG

CREW NECK	SIZE	PRICE
UJVIG2W (W)	XS-2XL	\$96.00
UJVIG2G (G)	YSM-YLG	\$91.00
V-NECK	SIZE	PRICE
UJVIG4W (W)	XS-2XL	\$96.00
UJVIG4G (G)	YSM-YLG	\$91.00

New construction follows same great fit of UA Showtime collection.

- 5 oz. lightweight fabric in body, 7 oz. fabric in arms for extra durability
- Armourfuse® Printed Signature HeatGear fabrication with 4-way stretch

ALL BASE JERSEY DESIGN IS APPROVED FOR HS/COLLEGIATE PLAY



**RALLY**  
NEW DESIGN FIRST SHIP: 6/1/2024

**FREE BALL**

## GAMETIME SHORTSLEEVE JERSEYS

XS-2XL, YSM-YLG

CREW NECK	SIZE	PRICE
UJVIG1W (W)	XS-2XL	\$88.00
UJVIG1G (G)	YSM-YLG	\$82.50
V-NECK	SIZE	PRICE
UJVIG3W (W)	XS-2XL	\$88.00
UJVIG3G (G)	YSM-YLG	\$82.50

New construction follows same great fit of UA Showtime collection.

- 5 oz. lightweight fabric in body, 7 oz. fabric in outer sleeve for extra durability
- Armourfuse® Printed Signature HeatGear fabrication with 4-way stretch

ALL BASE JERSEY DESIGN IS APPROVED FOR HS/COLLEGIATE PLAY

ALL GAMETIME JERSEY DESIGNS AVAILABLE IN SHORTSLEEVE/LONGSLEEVE CREW NECK & V-NECK





SLIDE SLAM



TONAL SHOT



BORDERLINE

ALL GAMETIME JERSEY DESIGNS AVAILABLE IN SHORTSLEEVE/LONGSLEEVE CREW NECK & V-NECK



ARMOURFUSE® UNIFORMS // ORDERING INFORMATION AND CUSTOMER SERVICE: 1-888-871-0990 // [www.underarmourteamuniforms.com](http://www.underarmourteamuniforms.com)

FILL-IN LIFECYCLE TIMING FOUND ON PAGE 46. DECORATION OPTIONS AND ORDERING INFORMATION ARE AVAILABLE ON PAGES 40-46.





## AF BEACH VOLLEYBALL JERSEY

XS-2XL, OVERSIZE 3XL

JERSEY	SIZE	PRICE
UJVJB1W (W)	XS-2XL	\$77.50

- Signature 4-Way Stretch Heatgear Fabrication
- Mesh underarm inserts for breathability
- Armhole construction to increase shoulder mobility

OVERSIZED SURCHARGE +\$5 PER SIZE  
ALL BASE JERSEY DESIGN IS APPROVED FOR HS/COLLEGIATE PLAY

## AF LINE SHOT SHORT 3.0

XS-2XL, OVERSIZE 3XL, YSM-YLG

4" SHORT	SIZE	PRICE
UJVSB3W (W)	XS-2XL	\$67.00
UJVSB3G (G)	YSM-YLG	\$62.00

3" SHORT	SIZE	PRICE
UJVSB6W (W)	XS-2XL	\$67.00

- Lightweight, 4-Way stretch fabrication improves range of motion and dries faster
- Smooth flatlock seams prevent chafing
- 4" and 3" inseam available, Girls only available in 4"
- Sublimated Back Wasteband, Options to add team name, team logo

BLK GPH MDN RED RYL

OVERSIZED SURCHARGE +\$5 PER SIZE  
ALL BASE JERSEY DESIGN IS APPROVED FOR HS/COLLEGIATE PLAY



### SOLARIZED

SHOWN WITH SOLARIZED  
AF LINE SHORT 3.0

### BOUNDLESS

SHOWN WITH BOUNDLESS  
AF LINE SHORT 3.0



**1361267****INFINITE POWER LS JERSEY****\$50.00 | FITTED | XXS-2XL****FIRST SHIP: C/O**

- Classic crew neck
- Exaggerated shoulder mesh panels for breathability
- 2-ply lower sleeve for extra durability
- White mesh color blocking on shoulder
- Curved hem for enhanced coverage
- 4-way stretch construction moves better in every direction
- Anti-odor technology prevents the growth of odor-causing microbes
- Double ply lower arms for added durability

**84% POLYESTER, 16% ELASTANE****SOLID COLORWAYS: 001, 100 & 040****heatgear**

001 BLK/WHT  
(SOLID)

100 WHT/GPH  
(SOLID)

040 GPH/WHT  
(SOLID)

410 MDN/WHT



600 RED/WHT

400 RYL/WHT

301 FGR/WHT



## 1370635 UA VB POWERHOUSE LS JERSEY 2.0

\$45.00 | **FITTED** | XS-2XL

**GIRLS: 1370638** | \$40.00 | YSM-YLG

FIRST SHIP: C/O

- Smooth, lightweight, fast-drying fabric for superior performance
- Upper sleeve & side mesh panels for added breathability
- 7 oz. lower sleeve for extra durability
- 4-way stretch construction & exaggerated armholes for better range of motion
- Bomber inspired V-Neck color
- White mesh color blocking on V-neck collar & side body inserts

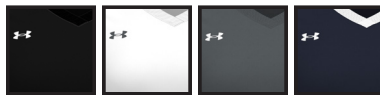
79% POLYESTER, 21% ELASTANE

SOLID COLORWAYS: 001, 100 & 012

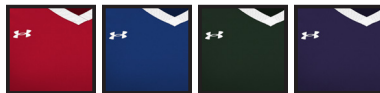
THE BASE UNIFORM DESIGN IS APPROVED FOR HS PLAY

**heatgear™**

G = GIRLS OFFERING



001 G BLK/WHT (SOLID)  
100 G WHT/PITCH (SOLID)  
012 PITCH/WHT (SOLID)  
410 G MDN/WHT



600 RED/WHT  
400 RYL/WHT  
301 FGR/WHT  
500 PUR/WHT



V-NECK DETAIL

**1377342****UA VB POWERHOUSE SS JERSEY 2.0**\$40.00 | **FITTED** | XS-2XL**GIRLS: 1377343** | \$35.00 | YSM-YLG

FIRST SHIP: C/O // LAST SHIP: 2/28/2025

- Smooth, lightweight, fast-drying fabric for superior performance
- Upper sleeve & side mesh panels for added breathability
- 4-way stretch construction & exaggerated armholes for better range of motion
- Bomber inspired V-Neck color
- White mesh color blocking on V-neck collar & side body inserts

79% POLYESTER, 21% ELASTANE

SOLID COLORWAYS: 001 &amp; 100

THE BASE UNIFORM DESIGN IS APPROVED FOR HS PLAY

**heatgear™**

G = GIRLS OFFERING





## 1351243 UA TEAM SHORTY 4"

\$30.00 | **COMPRESSION** | XS-2XL

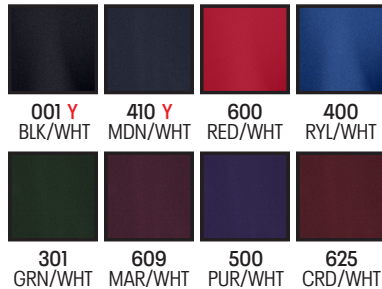
**YOUTH: 1363501** | \$25.00 | YXS-YXL

FIRST SHIP: C/O

- Super-light HeatGear® fabric delivers superior coverage without weighing you down
- Material wicks sweat & dries really fast
- 4-way stretch construction moves better in every direction
- Anti-odor technology prevents the growth of odor-causing microbes
- Stretchy elastic waistband with interior wordmark wrap
- Inseam: 4"
- Heatseal Logo

87% POLYESTER, 13% ELASTANE

**heatgear**™ Y = YOUTH OFFERING



## 1351244 UA TEAM SHORTY 3"

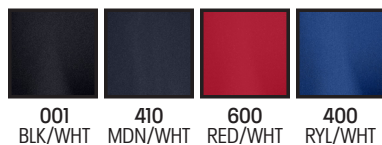
\$30.00 | **COMPRESSION** | XS-2XL

FIRST SHIP: C/O

- Super-light HeatGear® fabric delivers superior coverage without weighing you down
- Material wicks sweat & dries really fast
- 4-way stretch construction moves better in every direction
- Anti-odor technology prevents the growth of odor-causing microbes
- Stretchy elastic waistband with interior wordmark wrap
- Inseam: 3"
- Heatseal Logo

87% POLYESTER, 13% ELASTANE

**heatgear**™



## PROTECTIVE

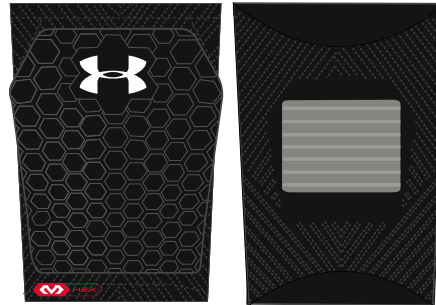
**NEW****UA21480****UA STRIVE 3 VOLLEYBALL  
KNEE PAD**

\$40.00 | SOLD IN PAIRS | SM, MD, LG

FIRST SHIP: 4/1/2024

- Featuring patented McDavid HEX technology, the leading protective padding in the game. HEX is lightweight and anatomically countoured, moving freely with your body to provide exceptional protection. The preferred choice for athletes around the world.
- Dual Density foam construction for protection
- Low-profile design for enhanced comfort and mobility
- High abrasion pad cover for better durability and sliding
- Countour circular knit sleeve for added comfort, fit, and feel with less bunching

48% NYLON, 37% POLYESTER, 15% ELASTODIENE, PE FOAM

POWERED BY:  **McDAVID**00001  
BLK/WHT90002  
WHT/BLK**NEW****UA21500****ARMOUR® 3 VOLLEYBALL  
KNEE PAD**

\$30.00 | SOLD IN PAIRS | SM, MD, LG

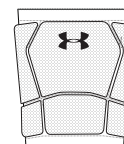
**GIRLS: UA21520 | \$28.00 | OSFA**

FIRST SHIP: 4/1/2024

- Circular knit construction for unmatched comfort, fit, and feel
- Dual density EVA foam for impact protection without the bulk
- Hinged design allows maximum mobility

61% POLYESTER, 25% NYLON, 14% ELASTODIENE, PE FOAM, EVA FOAM

GIRLS OFFERED IN ALL COLORS

00001  
BLK/WHT90002  
WHT/BLK

**NEW**

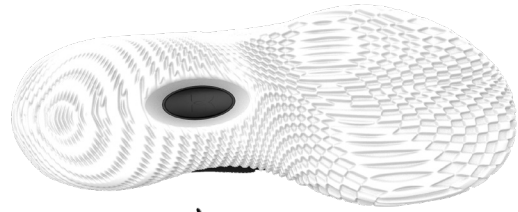
**3027083**

## UA W FLOW HIGHLIGHT ACE

\$140.00 | SIZES: 5-14

FIRST SHIP: 2/20/2024 // LAST SHIP: 11/30/2024

- UA FLOW midsole technology for enhanced grip, underfoot comfort and energy displacement
- Intelliknit upper and bootie for breathability and dynamic compression for comfort with stretch and support where needed
- Molded heel & plush collar foams for lockdown & comfort
- Integrated Pebax shank for midfoot stability
- Rubber printed toe for abrasion resistance
- Women's specific sockliner for added comfort



001  
BLK/CSR/MOD

100  
WHT/WHT/MDN

101  
WHT/RED  
SOLSTICE/RED

102  
WHT/MDN/MDN

**NEW**

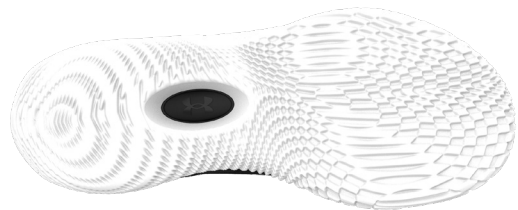
**3027084**

## UA W FLOW ACE LOW

\$125.00 | SIZES: 5-13, 14

FIRST SHIP: 2/20/2024 // LAST SHIP: 11/30/2024

- UA FLOW midsole technology for enhanced grip, underfoot comfort and energy displacement
- Intelliknit upper and bootie for breathability and dynamic compression for comfort with stretch and support where needed
- Molded heel & plush collar foams for lockdown & comfort
- Integrated Pebax shank for midfoot stability
- Rubber printed toe for abrasion resistance
- Women's specific sockliner for added comfort



001  
BLK/WHT/WHT

100  
WHT/WHT/MDN

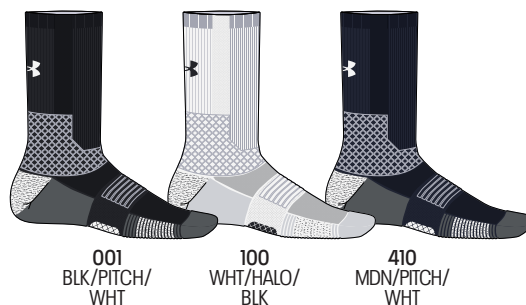
600  
BETA/RED/WHT

101  
WHT/WHT/MDN



**NEW****1380979****UA PLAYMAKER TEAM CREW UNISEX****\$18.00 | SINGLE PAIR****SM** (YOUTH 13.5K-4.5 / WOMEN'S 4-6),**MD** (YOUTH 4.5-7 / MEN'S 7-8.5 / WOMEN'S 6-10),**LG** (MEN'S 8.5-13 / WOMEN'S 10-14), **XL** (MEN'S 13-16)**FIRST SHIP: 6/20/2024**

- Sweat-activated ArmourGrip™ yarns on forefoot & back of heel help prevent slippage in cleats
- Max cushioning in toe, forefoot & heel for added protection where you need it most
- 360° ankle cushioning for a more secure fit in shoes or cleats
- Mesh panels on top of foot for added breathability
- Durable material wicks sweat & dries really fast
- Anti-odor technology helps prevent odor in the sock
- Dynamic arch support helps reduce foot fatigue
- Fitted heel contours around your foot for a better fit
- Left/Right specific fit

**94% POLYESTER, 4% ELASTANE, 2% NYLON****NEW****1386251****UA TEAM CREW UNISEX****\$14.00 | SINGLE PAIR****SM** (YOUTH 13.5K-4.5 / WOMEN'S 4-6),**MD** (YOUTH 4.5-7 / MEN'S 7-8.5 / WOMEN'S 6-10),**LG** (MEN'S 8.5-13 / WOMEN'S 10-14), **XL** (MEN'S 13-16)**YOUTH: 1386252 | \$12.00****XS** (10.5K-13K), **SM** (YOUTH 13.5K-4.5)**MD** (YOUTH 4.5-7)**FIRST SHIP: 4/20/2024**

- Medium cushioning throughout foot for comfort & protection
- Mesh panels on top of foot for added breathability
- Durable material wicks sweat & dries really fast
- Anti-odor technology helps prevent odor in the sock
- Embedded arch support helps reduce foot fatigue
- Fitted heel contours around your foot for a better fit
- Left/Right specific fit

**95% POLYESTER, 5% ELASTANE****Y = YOUTH OFFERING**

**NEW**

## 1386315 UA TRAINING COTTON CREW 6-PACK UNISEX

\$22.00 | SIX PAIR

SM (YOUTH 13.5K-4.5 / WOMEN'S 4-6),  
MD (YOUTH 4.5-7 / MEN'S 7-8.5 / WOMEN'S 6-10),  
LG (MEN'S 8.5-13 / WOMEN'S 10-14), XL (MEN'S 13-16)

**YOUTH: 1386314 | \$20.00**

XS (10.5K-13K), SM (YOUTH 13.5K-4.5)  
MD (YOUTH 4.5-7)

**FIRST SHIP: 4/20/2024**

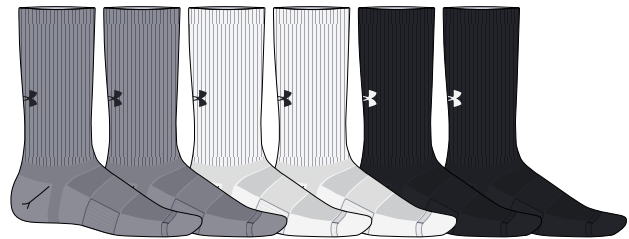
- Lightweight, soft cotton-blend for all-day comfort
- Material wicks sweat & dries fast
- Embedded arch support helps reduce foot fatigue
- Fitted heel contours around your foot for a better fit
- Medium Cushioning throughout foot for all day comfort
- Mesh panels for added breathability
- Ribbed construction provides added stretch & comfort

ADULT: 64% COTTON, 31% POLYESTER, 5% ELASTANE  
YOUTH: 66% COTTON, 31% POLYESTER, 3% ELASTANE

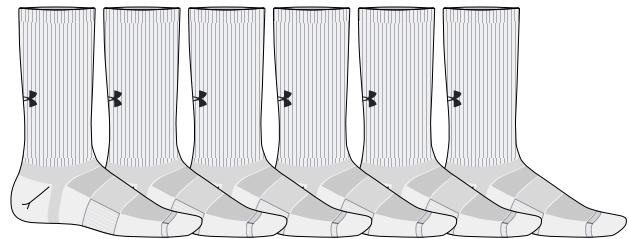
YOUTH OFFERED IN ALL COLORS



001  
BLK/BLK/WHT



035  
STL/WHT/BLK



100  
WHT/WHT/BLK







# MEN'S VOLLEYBALL ARMOURFUSE

- Brilliant, vibrant team colors permanently fused directly into textiles
- Limitless customization, all-inclusive pricing with exclusive UA designs and customized prints
- 37 different colors and 16 prints available
- 6 piece minimum order

## VOLLEYBALL SHORTSLEEVE JERSEY

XS-2XL, OVERSIZE 3XL

STYLE	SIZE	PRICE
UJVJ3XM (M)	XS-2XL	\$88.00

- Signature 4-way stretch HeatGear front, ventilated pin-dot mesh back for optimal performance
- +2" body length available (see page 44 for details)

BASE JERSEY DESIGN IS APPROVED FOR HS PLAY  
OVERSIZED SURCHARGE +\$5 PER SIZE



## VOLLEYBALL TANK 2.0

XS-2XL, OVERSIZE 3XL

STYLE	SIZE	PRICE
UJVJ2XM (M)	XS-2XL	\$77.50

- Signature 4-way stretch HeatGear front, ventilated pin-dot mesh back for optimal performance
- +2" body length available (see page 44 for details)

BASE JERSEY DESIGN IS APPROVED FOR HS PLAY  
OVERSIZED SURCHARGE +\$5 PER SIZE



## VOLLEYBALL SHORT 2.0

XS-2XL, OVERSIZE 3XL

STYLE	SIZE	PRICE
UJVSSM (M)	XS-2XL	\$77.50

- Signature 4-way stretch HeatGear knit
- 7 1/2" inseam
- -1" & -2" inseam length available (see page 44 for details)

OVERSIZED SURCHARGE +\$5 PER SIZE

SOAR



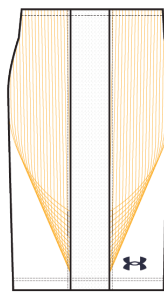
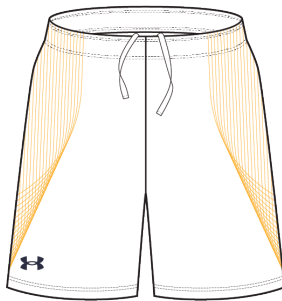
BACK VIEW

ALL VOLLEYBALL DESIGNS AVAILABLE IN SHORTSLEEVE & TANK

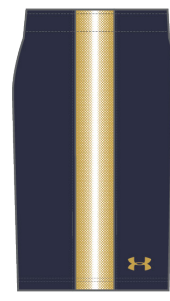


ARMOURFUSE® UNIFORMS // ORDERING INFORMATION AND CUSTOMER SERVICE: 1-888-871-0990 // [www.underarmourteamuniforms.com](http://www.underarmourteamuniforms.com)

FILL-IN LIFECYCLE TIMING FOUND ON PAGE 46. DECORATION OPTIONS AND ORDERING INFORMATION ARE AVAILABLE ON PAGES 40-46.



**NET TWIST**



**STREAK**

ALL VOLLEYBALL DESIGNS AVAILABLE IN SHORTSLEEVE & TANK



ARMOURFUSE® UNIFORMS // ORDERING INFORMATION AND CUSTOMER SERVICE: 1-888-871-0990 // [www.underarmourteamuniforms.com](http://www.underarmourteamuniforms.com)

FILL-IN LIFECYCLE TIMING FOUND ON PAGE 46. DECORATION OPTIONS AND ORDERING INFORMATION ARE AVAILABLE ON PAGES 40-46.





# TRAINING ARMOURFUSE

- Brilliant, vibrant team colors permanently fused directly into textiles
- Limitless customization, all-inclusive pricing with exclusive UA designs and customized prints
- 37 different colors and 16 prints available
- 6 piece minimum order



# AF TRAINING HOODY

XS-2XL, OVERSIZE 3XL-4XL, YSM-YXL

STYLE	SIZE	PRICE
UJGSLHM (M)	XS-2XL	\$122.00
UJGSLHY (Y)	YSM-YXL	\$111.50

OVERSIZED SURCHARGE +\$5 PER SIZE  
ADDITIONAL LENGTH OPTIONS FOUND ON PAGE 44



## SPEED

NEW DESIGN FIRST SHIP: 6/1/2024



## SPRINT



## SCOUT



## UA ECLIPSE



**NEW**

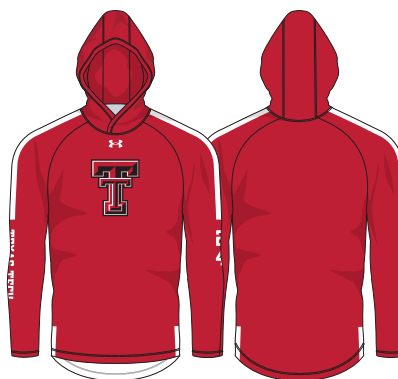
## AF LONGSLEEVE HOODED SHOOTER

FIRST SHIP: 6/1/2024 //  
XS-2XL, OVERSIZE 3XL-4XL, YSM-YXL

STYLE	SIZE	PRICE
UJGTHDM (M)	SM-2XL	\$119.00
UJGTHDY (Y)	YSM-YXL	\$1114.00

- New lightweight 4.8 oz. fabric with increased stretch for ultimate comfort

OVERSIZED SURCHARGE +\$5 PER SIZE  
ADDITIONAL LENGTH OPTIONS FOUND ON PAGE 44



**SPEED**

**NEW DESIGN FIRST SHIP: 6/1/2024**

**NEW**

## AF SHORTSLEEVE HOODED SHOOTER

FIRST SHIP: 6/1/2024 //  
XS-2XL, OVERSIZE 3XL-4XL, YSM-YXL

STYLE	SIZE	PRICE
UJGTSSM (M)	SM-2XL	\$114.00
UJGTSSY (Y)	YSM-YXL	\$109.00

- New lightweight 4.8 oz. fabric with increased stretch for ultimate comfort

OVERSIZED SURCHARGE +\$5 PER SIZE  
ADDITIONAL LENGTH OPTIONS FOUND ON PAGE 44



**SPEED**

**NEW DESIGN FIRST SHIP: 6/1/2024**

**NEW**

## AF SLEEVELESS HOODED SHOOTER

FIRST SHIP: 6/1/2024 //  
XS-2XL, OVERSIZE 3XL-4XL

STYLE	SIZE	PRICE
UJGTHVM (M)	SM-2XL	\$94.00

- New lightweight 4.8 oz. fabric with increased stretch for ultimate comfort

OVERSIZED SURCHARGE +\$5 PER SIZE  
ADDITIONAL LENGTH OPTIONS FOUND ON PAGE 44



**SPEED**

**NEW DESIGN FIRST SHIP: 6/1/2024**

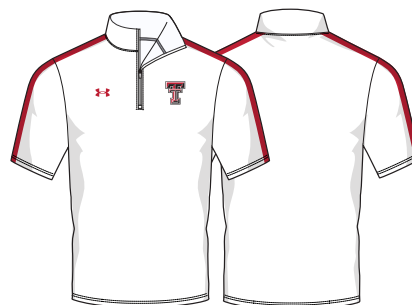
**NEW**

## AF SHORTSLEEVE ¼ ZIP

FIRST SHIP: 6/1/2024 //  
XS-2XL, OVERSIZE 3XL-4XL

STYLE	SIZE	PRICE
UJGQZVM (M)	SM-2XL	\$120.00

OVERSIZED SURCHARGE +\$5 PER SIZE  
ADDITIONAL LENGTH OPTIONS FOUND ON PAGE 44



**SPEED**

**NEW DESIGN FIRST SHIP: 6/1/2024**







SPRINT



SCOUT



UA ECLIPSE



SPRINT



SCOUT



UA ECLIPSE



SPRINT



SCOUT



UA ECLIPSE



SPRINT



SCOUT



UA ECLIPSE

**NEW**

## AF TRAINING ¼ ZIP

FIRST SHIP: 6/1/2024 // XS-2XL, OVERSIZE 3XL-4XL

- New lightweight 4.8 oz. fabric with increased stretch for ultimate comfort

STYLE	SIZE	PRICE
UJGQZLM (M)	SM-2XL	\$130.00

OVERSIZED SURCHARGE +\$5 PER SIZE  
ADDITIONAL LENGTH OPTIONS FOUND ON PAGE 44



**SPEED**

NEW DESIGN FIRST SHIP: 6/1/2024

**NEW**

## AF TRAINING LONGSLEEVE TEE

FIRST SHIP: 6/1/2024 // XS-2XL, OVERSIZE 3XL-4XL, YSM-YXL

STYLE	SIZE	PRICE
UJGJL2M (M)	XS-2XL	\$90.00
UJGJL2Y (Y)	YSM-YXL	\$86.00

- New lightweight 4.8 oz. fabric with increased stretch for ultimate comfort

OVERSIZED SURCHARGE +\$5 PER SIZE  
ADDITIONAL LENGTH OPTIONS FOUND ON PAGE 44



**SPEED**

NEW DESIGN FIRST SHIP: 6/1/2024

**NEW**

## AF TRAINING SHORTSLEEVE TEE

FIRST SHIP: 6/1/2024 // XS-2XL, OVERSIZE 3XL-4XL, YSM-YXL

LOOSE SS T	SIZE	PRICE
UJGS2M (M)	XS-2XL	\$75.00
UJGS2Y (Y)	YSM-YXL	\$71.00

- New lightweight 4.8 oz. fabric with increased stretch for ultimate comfort

OVERSIZED SURCHARGE +\$5 PER SIZE  
ADDITIONAL LENGTH OPTIONS FOUND ON PAGE 44



**SPEED**

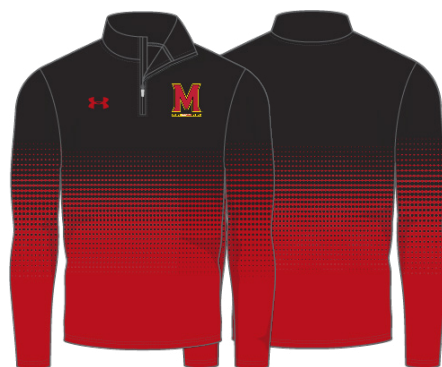
NEW DESIGN FIRST SHIP: 6/1/2024



**SPRINT**



**SCOUT**



**UA ECLIPSE**



**SPRINT**



**SCOUT**



**UA ECLIPSE**



**SPRINT**



**SCOUT**



**UA ECLIPSE**





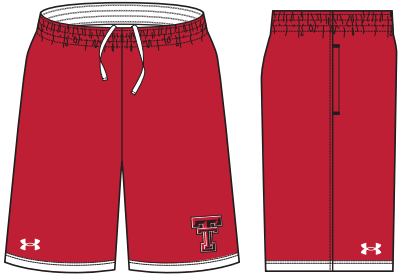
# AF TRAINING SHORTS

XS-2XL, OVERSIZE 3XL-4XL, YSM-YXL

POCKETED SHORT	SIZE	PRICE
UJGS2PM (M)	XS-2XL	\$65.00
UJGS2PY (Y)	YSM-YXL	\$60.00

NON-POCKETED SHORT	SIZE	PRICE
UJGS2M (M)	XS-2XL	\$60.00
UJGS2Y (Y)	YSM-YXL	\$55.00

9" INSEAM FOR POCKETED AND NON-POCKETED SHORT  
OVERSIZED SURCHARGE +\$5 PER SIZE  
ADDITIONAL LENGTH OPTIONS FOUND ON PAGE 44



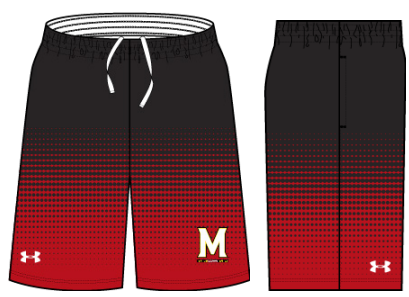
**SPEED**  
NEW DESIGN FIRST SHIP: 6/1/2024



**SPRINT**



**SCOUT**



**UA ECLIPSE**



# AF TRAINING COMPRESSION SLEEVELESS

XS-2XL, OVERSIZE 3XL-4XL

STYLE	SIZE	PRICE
UJGCB (M)	XS-2XL	\$65.00

OVERSIZED SURCHARGE +\$5 PER SIZE  
ADDITIONAL LENGTH OPTIONS FOUND ON PAGE 44



## SPEED

NEW DESIGN FIRST SHIP: 6/1/2024



## SPRINT

NEW DESIGN FIRST SHIP: 6/1/2024



## SCOUT



## UA ECLIPSE



## HALF SLEEVE



**SPEED**

**NEW DESIGN FIRST SHIP: 6/1/2024**

## AF TRAINING COMPRESSION HALF SLEEVE

XS-2XL, OVERSIZE 3XL-4XL

STYLE	SIZE	PRICE
UJGHBL (M)	XS-2XL	\$70.50

OVERSIZED SURCHARGE +\$5 PER SIZE  
ADDITIONAL LENGTH OPTIONS FOUND ON PAGE 44



**SPRINT**

**NEW DESIGN FIRST SHIP: 6/1/2024**

## AF TRAINING COMPRESSION SHORTSLEEVE

XS-2XL, OVERSIZE 3XL-4XL

STYLE	SIZE	PRICE
UJGTBL (M)	XS-2XL	\$65.00

OVERSIZED SURCHARGE +\$5 PER SIZE  
ADDITIONAL LENGTH OPTIONS FOUND ON PAGE 44



**SCOUT**

## AF TRAINING COMPRESSION LONGSLEEVE

XS-2XL, OVERSIZE 3XL-4XL

STYLE	SIZE	PRICE
UJGCLS (M)	XS-2XL	\$75.50

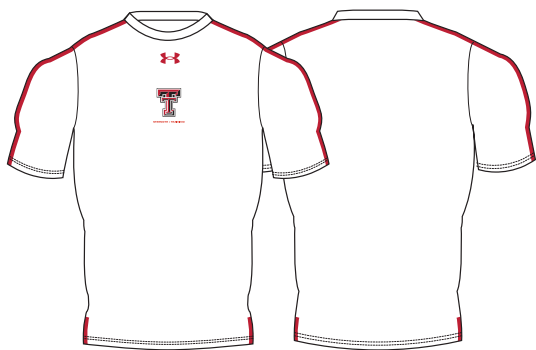
OVERSIZED SURCHARGE +\$5 PER SIZE  
ADDITIONAL LENGTH OPTIONS FOUND ON PAGE 44



**UA ECLIPSE**



## SHORTSLEEVE



**SPEED**

NEW DESIGN FIRST SHIP: 6/1/2024

## LONGSLEEVE



**SPEED**

NEW DESIGN FIRST SHIP: 6/1/2024



**SPRINT**

NEW DESIGN FIRST SHIP: 6/1/2024



**SPRINT**

NEW DESIGN FIRST SHIP: 6/1/2024



**SCOUT**



**SCOUT**



**UA ECLIPSE**



**UA ECLIPSE**



# TRAINING ARMOURFUSE

- Brilliant, vibrant team colors permanently fused directly into textiles
- Limitless customization, all-inclusive pricing with exclusive UA designs and customized prints
- 37 different colors and 16 prints available
- 6 piece minimum order



# AF TRAINING HOODY

XS-2XL, OVERSIZE 3XL, YSM-YXL

STYLE	SIZE	PRICE
UJGSLHW (W)	XS-2XL	\$122.00
UJGSLHY (Y)	YSM-YXL	\$111.50

OVERSIZED SURCHARGE +\$5 PER SIZE  
ADDITIONAL LENGTH OPTIONS FOUND ON PAGE 44



**SPEED**

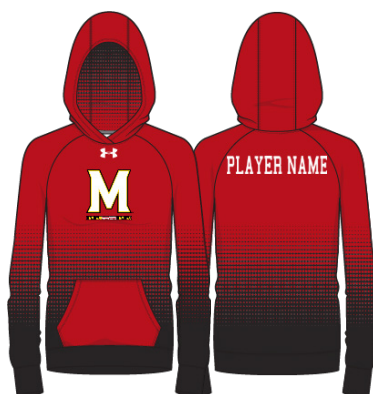
NEW DESIGN FIRST SHIP: 6/1/2024



**SPRINT**



**SCOUT**



**UA ECLIPSE**





**NEW**

# AF TRAINING ½ ZIP

FIRST SHIP: 6/1/2024 // XS-2XL, OVERSIZE 3XL

STYLE	SIZE	PRICE
UJGHZLW (W)	XS-2XL	\$130.00

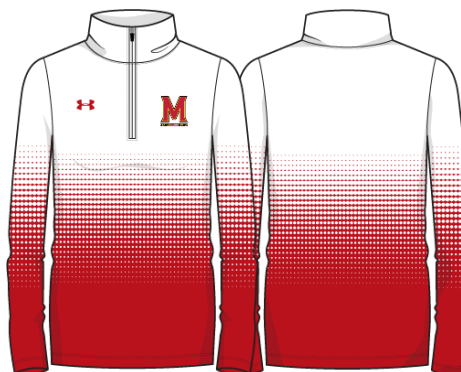
- New lightweight 4.8 oz. fabric with increased stretch for ultimate comfort

OVERSIZED SURCHARGE +\$5 PER SIZE  
ADDITIONAL LENGTH OPTIONS FOUND ON PAGE 44


**SPEED**

NEW DESIGN FIRST SHIP: 6/1/2024


**SPRINT**

**SCOUT**

**UA ECLIPSE**

**SPEED**

NEW DESIGN FIRST SHIP: 6/1/2024

**SPEED**

NEW DESIGN FIRST SHIP: 6/1/2024

**NEW****AF TRAINING  
SHORTSLEEVE TEE**FIRST SHIP: 6/1/2024 //  
XS-2XL, OVERSIZE 3XL, YSM-YXL

LOOSE SST	SIZE	PRICE
UJGS2W (W)	XS-2XL	\$75.00
UJGS2Y (Y)	YSM-YXL	\$71.00

- New lightweight 4.8 oz. fabric with increased stretch for ultimate comfort

OVERSIZED SURCHARGE +\$5 PER SIZE  
ADDITIONAL LENGTH OPTIONS FOUND ON PAGE 44**SPRINT****SPRINT****NEW****AF SHORTSLEEVE  
HOODED SHOOTER**FIRST SHIP: 6/1/2024 //  
SM-2XL, OVERSIZE 3XL, YSM-YXL

STYLE	SIZE	PRICE
UJGTSSW (W)	SM-2XL	\$114.00
UJGTSSY (Y)	YSM-YXL	\$109.00

- New lightweight 4.8 oz. fabric with increased stretch for ultimate comfort

OVERSIZED SURCHARGE +\$5 PER SIZE  
ADDITIONAL LENGTH OPTIONS FOUND ON PAGE 44**SCOUT****SCOUT****UA ECLIPSE****UA ECLIPSE**



**SPEED**

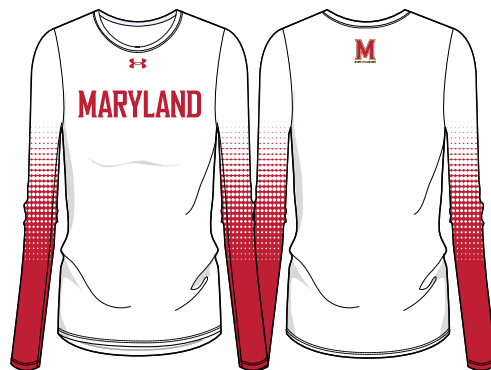
NEW DESIGN FIRST SHIP: 6/1/2024



**SPRINT**



**SCOUT**



**UA ECLIPSE**

**NEW**

## AF TRAINING LONGSLEEVE TEE

FIRST SHIP: 6/1/2024 //  
XS-2XL, OVERSIZE 3XL, YSM-YXL

LOOSELST	SIZE	PRICE
UJGJL2W (W)	XS-2XL	\$90.00
UJGJL2Y (Y)	YSM-YXL	\$86.00

- New lightweight 4.8 oz. fabric with increased stretch for ultimate comfort

OVERSIZED SURCHARGE +\$5 PER SIZE  
ADDITIONAL LENGTH OPTIONS FOUND ON PAGE 44



## AF TRAINING SHORTS

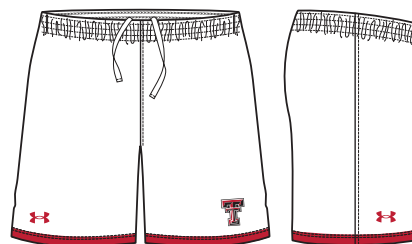
XS-2XL, OVERSIZE 3XL, YSM-YXL

POCKETED SHORT	SIZE	PRICE
UJGS2PW (W)	XS-2XL	\$65.00
UJGS2PY (Y)	YSM-YXL	\$60.00

NON-POCKETED SHORT	SIZE	PRICE
UJGS2W (W)	XS-2XL	\$60.00
UJGS2Y (Y)	YSM-YXL	\$55.00

HEADBAND	SIZE	PRICE
UJLHBW1 (W)	OSFA	\$34.00

5" INSEAM FOR POCKETED AND NON-POCKETED SHORT  
OVERSIZED SURCHARGE +\$5 PER SIZE  
ADDITIONAL LENGTH OPTIONS FOUND ON PAGE 44



### SPEED

NEW DESIGN FIRST SHIP: 6/1/2024



### SPRINT



### SCOUT



### UA ECLIPSE





WHITE	BLACK	PITCH GRAY	GRAPHITE	BASEBALL GRAY	SILVER GRAY	OCEAN STORM
MIDNIGHT NAVY	ROYAL	POWDERKEG BLUE	ELECTRIC BLUE	CAPRI	CAROLINA BLUE	COASTAL TEAL
PURPLE	MAROON	CARDINAL	CRIMSON	UNIVERSITY RED	TROPIC PINK	
PINK	VINTAGE WHITE	TAXI	STEELTOWN GOLD	TENNESSEE ORANGE	DARK ORANGE	
TEXAS ORANGE	CLEVELAND BROWN	GOLD RUSH	TEAM VEGAS GOLD	GRAYSTONE		
FOREST GREEN	TEAM KELLY GREEN	MIAMI TEAL	SEA GLASS	POISON		

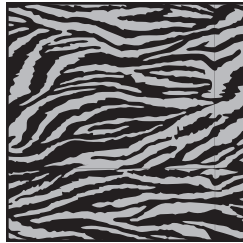
## FLUORESCENTS (NOT CURRENTLY AVAILABLE IN TONAL PRINTS OR ON GAMEDAY SELECT PRODUCT)

ORANGE FLUORESCENT	PINK FLUORESCENT	GREEN FLUORESCENT	YELLOW FLUORESCENT

Prints available in all ArmourFuse colors. (Fluorescents not currently available in tonal prints)



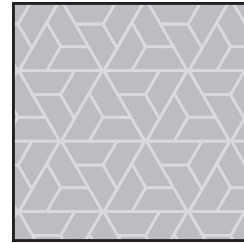
WOODLAND CAMO



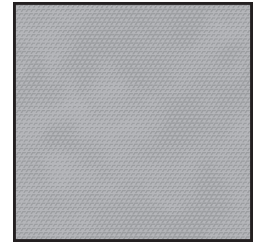
BENGAL



BLUR



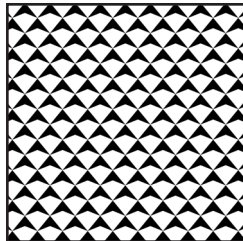
RAZOR



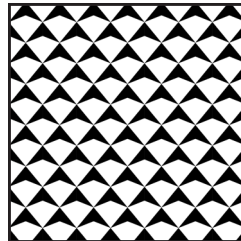
SCALE



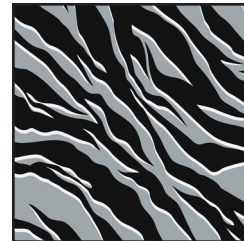
SPLINTER



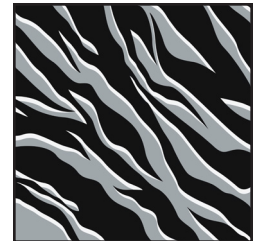
SHIELD MICRO



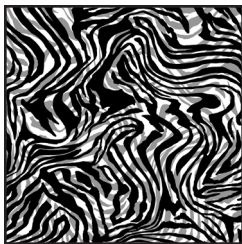
SHIELD MID



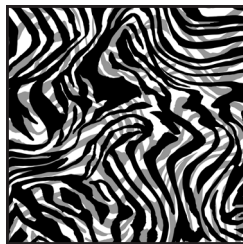
TIGER MICRO



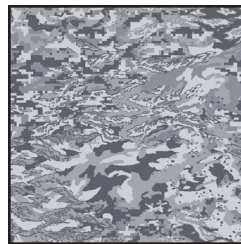
TIGER MACRO



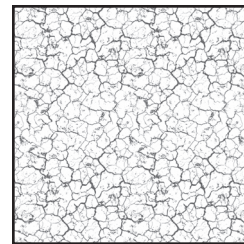
ZEBRA MICRO



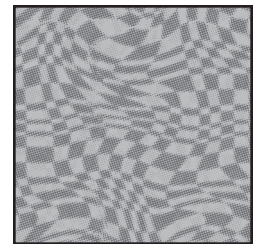
ZEBRA MACRO



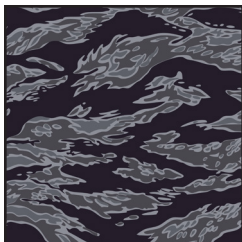
ABC CAMO



CRACKLE



HAFITONE CHECKER



TIGER CAMO



FLORAL

(Not available on Gameday Select)

## DESERT CAMO (LOCKED COLOR COMBINATIONS, CANNOT BE ALTERED)



DESERT  
WOODLAND CAMO



STOCK DECORATION OPTIONS

SCREEN PRINT	ONE COLOR	TWO COLORS
Team Name	\$5.50	\$10.50
Team Mascot/Logo	\$5.50	\$10.50
Front + Back Numbers	\$12.00	\$17.00

TWILL	ONE COLOR	TWO COLORS
Team Name	\$22.00	\$27.00
Front + Back Numbers	\$27.00	\$32.00
Player Names	\$22.00	
ArmourFuse Twill Patch (Max 3"x3")	\$11.00	\$11.00

EMBROIDERY	ONE COLOR	TWO COLORS
Team Name (up to 2")	\$10.00	\$10.00

see page 360 for Embroidered Mascot/Logo pricing

ADDITIONAL STOCK OPTIONS & NOTES

- Player Numbers Per Location = 1/2 of above  
"Front + Back Numbers" pricing
- Player Name Directly On Jersey Only (No Nameplates)
- ArmourFuse Twill = Twill Pricing +\$10
- Add Tail to Script Font Twill Team Name +\$10
- Add Embroidery to Twill Tail +\$10
- Non-Stock designs and lettering may require additional charge at Under Armour's discretion (call for quote)

FONT OPTIONS

BADGER  
ABCDEFGHIJKLMNOPQRSTUVWXYZ  
0123456789

BEAR  
ABCDEFGHIJKLMNOPQRSTUVWXYZ  
0123456789

CADET  
ABCDEFGHIJKLMNOPQRSTUVWXYZ  
0123456789

FULL BLOCK  
ABCDEFGHIJKLMNOPQRSTUVWXYZ  
0123456789

TERRAFONT  
ABCDEFGHIJKLMNOPQRSTUVWXYZ  
0123456789

PREMIER  
ABCDEFGHIJKLMNOPQRSTUVWXYZ  
0123456789

TUSCAN  
ABCDEFGHIJKLMNOPQRSTUVWXYZ  
0123456789

UNDENIABLE  
ABCDEFGHIJKLMNOPQRSTUVWXYZ  
0123456789

UA COLLEGIATE SANS  
ABCDEFGHIJKLMNOPQRSTUVWXYZ  
0123456789

UA COLLEGIATE SANS CONDENSED  
ABCDEFGHIJKLMNOPQRSTUVWXYZ  
0123456789

UA COLLEGIATE SERIF  
ABCDEFGHIJKLMNOPQRSTUVWXYZ  
0123456789

UA COLLEGIATE SERIF CONDENSED  
ABCDEFGHIJKLMNOPQRSTUVWXYZ  
0123456789

MODERN  
ABCDEFGHIJKLMNOPQRSTUVWXYZ  
0123456789

ATHLETIC SCRIPT  
ABCDEFGHIJKLMNOPQRSTUVWXYZ  
abcdefghijklmnopqrstuvwxyz

SWINGMAN  
ABCDEFGHIJKLMNOPQRSTUVWXYZ  
abcdefghijklmnopqrstuvwxyz

NOTE:  
• Gameday Select Package Pricing now includes all of the above listed fonts  
• Dropped fonts available for fill-in orders only

LETTERING ARRANGEMENTS

STRAIGHT  
TEAMNAME
























BRIDGED  
TEAMNAME

ARCH  
TEAMNAME

VERTICAL ARCH  
TEAMNAME

SCRIPT WITH TAIL  
Teamname

## GAMEDAY SELECT OPTIONS

3/16" 1-COLOR PIPE					1/2" 3-COLOR BRAID			INCLUDED PIPE/BRAID	OPTIONAL PANT ALTERATIONS	LIST PRICE
								<b>1. Jersey Front</b> Around Neck <b>OR</b> Around Placket <b>OR</b> None	Reduce Knicker Inseam 2" and Hem w/ Elastic Increase Knicker Inseam 2" and Hem w/ Elastic Increase Knicker Inseam 4" and Hem w/ Elastic* Reduce Relaxed/Tapered Inseam 2" and Hem Increase Relaxed/Tapered Inseam 2" and Hem Increase Relaxed/Tapered Inseam 4" and Hem*	\$0.00 \$0.00 \$15.00 \$0.00 \$0.00 \$15.00
WHITE	BASEBALL GRAY	BLACK	MIDNIGHT NAVY	UNIVERSITY RED	<b>ANY COMBO OF PIPE COLORS</b>			<b>2. Jersey Sleeves</b> Sleeve Ends <b>OR</b> None	<b>OPTIONAL ARMOURFUSE® TWILL (L X H)</b>	<b>LIST PRICE</b>
								<b>3. Pants</b> Down Side <b>OR</b> None	Custom Font Team Name (Max. 14" x 4.25") Custom Left Chest Team Logo (Max. 4" x 5") Custom Sleeve Patch (Max. 4" x 4") Custom Back Neck Patch (Max. 3" x 2") Player Name (On Nameplate) Player Name Directly on Jersey (No Nameplate) Blank Nameplate Add Tail to Script Font Team Name Add Text to Script Font Tail	\$10.00 \$15.00 \$15.00 \$15.00 \$40.00 \$30.00 \$7.00 \$20.00 \$20.00
ROYAL	FOREST GREEN	MAROON	PURPLE	DARK ORANGE						
										
STEELTOWN GOLD	TEAM KELLY GREEN	CARDINAL	TEAM VEGAS GOLD	CAROLINA BLUE						
										
CLEVELAND BROWN	TEAL	TEXAS ORANGE	SILVER GRAY	GRAPHITE						

**Note:** Vector art must be provided for custom Armourfuse® Twill or additional artwork charges will apply

\*Available on Men's styles only





















## STOCK OPTIONS

3/16" 1-COLOR PIPE	LIST PRICE
Around Placket (UBJ316P)	\$17.00
Sleeve Ends (UBJ316S)	\$17.00
Down Side (UBP316D)	\$17.00

1/2" 3-COLOR BRAID	LIST PRICE
Around Placket (UBJ12AP)	\$17.00
Around Neck (UBJ12NB)	\$17.00
Sleeve Ends (UBJ12SE)	\$17.00
Down Sides (UBP12DS)	\$17.00

**NOTE:** Additional leadtime should be expected for orders including piping, braiding and/or hemming. Please contact a UA Sale Rep for updates.

PIPE & BRAID AVAILABLE COLORS					
Pipe 3/16"					
	WHITE	BLACK	MIDNIGHT NAVY	UNIVERSITY RED	ROYAL
					
	MAROON	PURPLE	DARK ORANGE	CARDINAL	TEAM VEGAS GOLD
Braid 1/2"					
	BK/WH/BK	NA/WH/NA	SC/WH/SC	RO/WH/RO	
					
	DG/WH/DG	MA/WH/MA	PU/WH/PU	OR/WH/OR	
					
	CA/WH/CA	VG/WH/VG			

## ADDITIONAL LENGTH OPTIONS (ARMOURFUSE ONLY - \$10 FOR ALL -/+ OPTIONS)

### BASEBALL/SOFTBALL

TYPE	ADJUSTMENT	CODE
JERSEYS	Add 2" body length	UIX2BDY
	Add 4" body length	UIX4BDY
PANTS	Subtract 2" from inseam	UISHTN2
	Add 2" to inseam length	UIX2INS
	Add 4" to inseam length	UIX4INS

### FOOTBALL

TYPE	ADJUSTMENT	CODE
JERSEYS	Shorten to waist length	
PANTS	Add 2" to inseam length	UIX2INS

### LACROSSE/ FIELD HOCKEY

TYPE	ADJUSTMENT	CODE
JERSEYS	Add 2" body length	UIX2BDY
SHORTS	Subtract 1" from inseam	UISHTN1
	Subtract 2" from inseam	UISHTN2
	Add 1" to inseam length	UIX1INS
	Add 2" to inseam length	UIX2INS
KILTS	Add 1" to inseam length	UIX1INS
	Add 2" to inseam length	UIX2INS

### BASKETBALL

TYPE	ADJUSTMENT	CODE
JERSEYS	Add 2" body length	UIX2BDY
	Add 4" body length	UIX4BDY
	Add 6" body length	UIX6BDY
SHORTS	Subtract 1" from inseam	UISHTN1
	Add 1" to inseam length	UIX1INS
	Add 2" to inseam length	UIX2INS
	Add 3" to inseam length	UIX3INS

SHOOTING SHIRTS	Add 2" body, 1" sleeve	UIX2B1S
	Add 4" body, 2" sleeve	UIX4B2S
	Add 6" body, 3" sleeve	UIX6B3S

### SOCCER

TYPE	ADJUSTMENT	CODE
JERSEYS	Add 2" body length	UIX2BDY
SHORTS	Subtract 1" from inseam	UISHTN1
	Subtract 2" from inseam	UISHTN2
	Add 1" to inseam length	UIX1INS
	Add 2" to inseam length	UIX2INS

### TRACK & FIELD

TYPE	ADJUSTMENT	CODE
JERSEYS	Add 2" body length	UIX2BDY
LOOSE SHORTS*	Subtract 1" from inseam	UISHTN1
	Add 1" to inseam length	UIX1INS

\*UIXS2M & UIXS2W ONLY

### TRAINING

TYPE	ADJUSTMENT	CODE
JERSEYS	Add 2" body length	UIX2BDY
	Add 4" body length	UIX4BDY
	Add 6" body length	UIX6BDY
SHORTS	Subtract 1" from inseam	UISHTN1
	Subtract 2" from inseam	UISHTN2
	Add 1" to inseam length	UIX1INS
	Add 2" to inseam length	UIX2INS
	Add 3" to inseam length	UIX3INS

### VOLLEYBALL

TYPE	ADJUSTMENT	CODE
JERSEYS	Add 2" body length	UIX2BDY
SHORTS	Subtract 1" from inseam	UISHTN1
	Subtract 2" from inseam	UISHTN2

## EMBROIDERY

#### MASCOTS (STOCK ONLY) LIST PRICE

Mascot	\$11.00
Mascot with One Line	\$12.00
Mascot with Two Lines	\$13.00
American Flag	\$11.00
Small/Homeplate	\$6.00

#### DIGITIZING (STOCK AND ARMOURFUSE ONLY) LIST PRICE

Stock Designs and Lettering	\$180.00
Custom Logos	Call for Quote

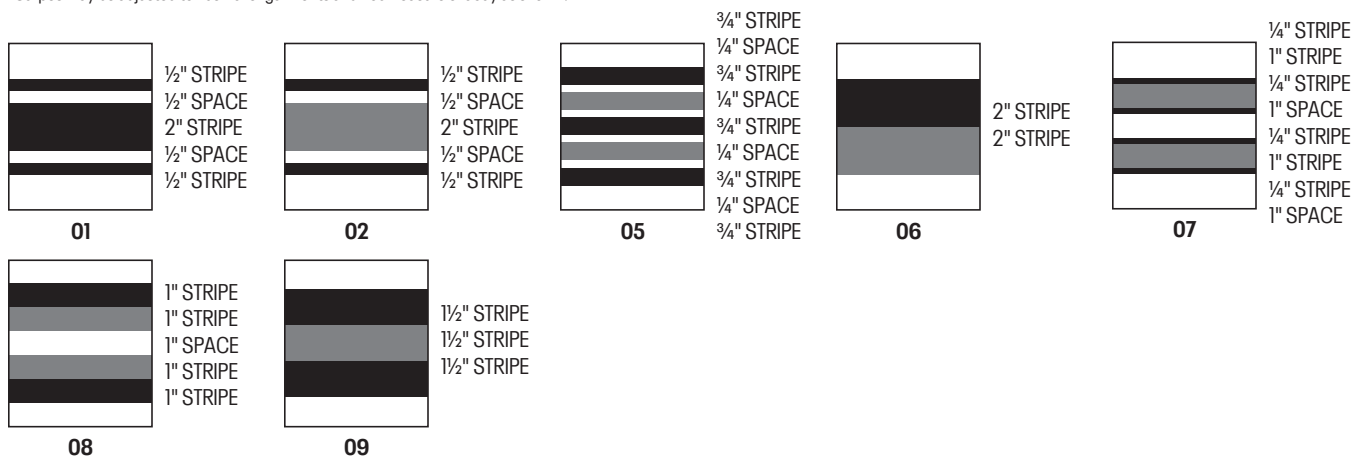
- Prices are based upon size of designs, not the number of colors. Prices are subject to change if design exceeds specifications.
- Dimensions are maximum space - unless specifically noted best judgement will be used.
- Letter styles are available horizontal or arched.
- No digitizing charge for team names.

- Flag size up to 2" by 3" (bigger area - call for quote)
- Minimum order charges apply for embroidery
- All designs require an additional digitizing charge, except:
  - 1) Digitized designs supplied on a disk
  - 2) Digitized design is a re-order of an existing design

## STANDARD SLEEVE PRINT STRIPES

\*OPTIONS - Code numbers listed below stripe patterns

\*Stripes may be adjusted to fit smaller garments and not measure exactly as shown.





ARMOURFUSE® GRAPHIC OPTIONS

A

B

C

D

E

F

G

H

I

J

K

L

M

UNIFORM CARE INSTRUCTIONS

To enhance the appearance and extend the life of your uniforms, Under Armour recommends that you follow these cleaning and storing procedures:

- DO NOT DRY CLEAN
- DO NOT WASH IN HOT WATER
- DO NOT USE CHLORINE BLEACH
- DO NOT USE FABRIC SOFTENER
- DO NOT WASH WHITES AND COLORS TOGETHER
- DO NOT OVERLOAD THE WASHING MACHINE
- DO NOT MACHINE DRY ON HIGH HEAT
- DO NOT LEAVE WET OR DAMP GARMENTS IN YOUR TRAVEL BAG, IN A PILE WITH OTHER CLOTHING OR IN WASHING MACHINE

- Pre wash uniform prior to use.
- Uniforms should always be laundered immediately after wearing. However, if this is not possible, rinse garments and hang individually on rust-proof hangers. (Moisture may cause color migration of acid dyes so we advise separating wet or damp uniforms.)
- Belts and any other contrasting color items should be washed separately from the garment.
- It is always advisable to test wash a single uniform according to directions before washing an entire load.
- Wash and rinse all garments in warm water (approx. 110°) with mild detergent. Remove promptly after wash cycle.
- For optimum results, hang garments (especially those with elastane) to dry. If you cannot hang dry, machine dry on the lowest setting. Turn jerseys inside out before machine drying. Remove items from dryer immediately upon completion of the cycle. (Excessive heat can cause fabric shrinkage, discoloration, and cracking and peeling of vinyl plastisol lettering inks.)
- Make sure uniforms are completely dry before storing. Store in a dry area to prevent mildew. Protect them from sunlight and fluorescent light to prevent yellowing.

**PLEASE NOTE:** Under Armour will not be responsible for uniforms that are damaged due to improper care and maintenance. Failure to follow our specified care instructions will void all guarantees.

UNIFORM FILL-IN LIFECYCLE

LAST SHOWN IN CATALOG	LAST FILL-IN SEASON	LAST FILL-IN SHIP
WI'20	WI'23	3/15/2024
SP'21	SP'24	6/15/2024
FA'21	FA'24	12/15/2024
WI'21	WI'24	3/15/2025
SP'22	SP'25	6/15/2025
FA'22	FA'25	12/15/2025
WI'22	WI'24	3/15/2025
SP'23	SP'25	6/15/2025
FA'23	FA'25	12/15/2025
W'23	W'25	3/15/2026
SP'24	SP'26	6/15/2026
FA'24	FA'26	12/15/2026



**GAMEDAY SELECT TEAM UNIFORMS**  
ORDERING INFORMATION AND CUSTOMER SERVICE:  
1-800-474-6118  
[www.uacustomuniforms.com](http://www.uacustomuniforms.com)



**UA NEXT**  
ORDERING INFORMATION AND CUSTOMER SERVICE:  
1-888-871-0990  
[www.underarmourteamuniforms.com](http://www.underarmourteamuniforms.com)



**ARMOURFUSE™ TEAM UNIFORMS**  
ORDERING INFORMATION AND CUSTOMER SERVICE:  
1-888-871-0990  
[www.underarmourteamuniforms.com](http://www.underarmourteamuniforms.com)



**STOCK TEAM UNIFORMS**  
ORDERING INFORMATION AND CUSTOMER SERVICE:  
1-888-871-0990  
[www.underarmourteamuniforms.com](http://www.underarmourteamuniforms.com)

ORDERING INFORMATION

**Guarantee:**  
The materials and workmanship of our garments are guaranteed when given fair treatment and used under normal conditions.

**Color Matching:**  
Scientifically, it is not possible to achieve a perfect color match from one dye lot to another. Therefore, we cannot guarantee a perfect match from order to order or from one fabric to another.

**Color Abbreviation Key:**  
The following abbreviations may be used when ordering merchandise.

<b>BG</b> Baseball Gray	<b>EB</b> Electric Blue	<b>PI</b> Pink	<b>SI</b> Silver Grey
<b>BK</b> Black	<b>GP</b> Graphite	<b>PK</b> Powderkeg Blue	<b>TI</b> Taxi
<b>BR</b> Brown	<b>KE</b> Team Kelly Green	<b>PO</b> Poison	<b>TE</b> Teal
<b>CA</b> Cardinal	<b>LG</b> Steeltown Gold	<b>PU</b> Purple	<b>TO</b> Texas Orange
<b>CB</b> Carolina Blue	<b>MA</b> Maroon	<b>RO</b> Royal	<b>TP</b> Tropic Pink
<b>CP</b> Capri	<b>NA</b> Midnight Navy	<b>RU</b> Gold Rush	<b>VG</b> Team Vegas Gold
<b>DG</b> Forest Green	<b>OR</b> Dark Orange	<b>SC</b> University Red	<b>WH</b> White

**Price Policy:**  
All catalog prices are list or suggested retail. Prices are subject to change without notice. Merchandise will be invoiced based on the prices in effect at the time the order is placed.

**Terms:**  
Prices are FOB shipping point. Payment is due Net 30.

**Minimum Order Charges:**  
A handling charge of \$10.00 will be added to orders of less than \$150.00 list.  
Custom and GamedaySelect fill-in minimum order is 6 units per style and color. A 100% surcharge will be applied to orders of 1-2 units, and a 50% surcharge for orders of 3-5 units.

**Lettered Orders for COD Shipment:**  
A 50% deposit is required on all lettered orders calling for COD shipment.

**Delivery:**  
Shipments will always be made by the fastest, least expensive means possible. The customer will assume any additional expense required to expedite delivery.

**Order Cancellations:**  
Cancellations must be received at least one day prior to the ship date. Special order garments cannot be cancelled after they have been cut. Lettered garments cannot be cancelled after they have been printed or sewn.

**Returns:**  
Claims must be reported to our office within 10 working days of merchandise receipt. Returns cannot be made after 30 days of the invoice date. All returns for plain merchandise must be clearly marked with an authorization number or label obtained from our office. All returns for lettered merchandise must be clearly marked "LETTERING." When requesting an authorization label, the following information is required: Reason for return, Invoice #, Style #, Color, Size/Quantity. An authorization label will then be sent to you to prepare the merchandise for return shipment. We reserve the right to repair, replace or issue credit for any merchandise returned. A 15% restocking fee and shipping charges will be charged for merchandise returned that is either not damaged or the damage is determined not to be our fault. All worn garments must be properly laundered prior to return or they will not be accepted.

All custom and custom-stock uniforms may not be returned under any circumstances if delivered properly.

**Shortages:**  
All claims must be made within 10 days of the invoice date.

**New Accounts:**  
All new accounts must be opened through your local sales representative. New accounts that do not have a Dunn and Bradstreet rating will be shipped COD until a credit line has been established.

**Samples:**  
Samples will be entered and billed as a regular order. Samples cannot be returned without prior approval from our office.

**Imprint Orders:**  
All imprint orders must be emailed, mailed or faxed in with detailed instructions on UA order forms. Imprint orders will not be taken by phone. Once garments have been lettered, the order cannot be cancelled or returned.

Under Armour will not be responsible for any items not checked for order accuracy or sizing before being sent to a printer / screener. We will not be responsible for shrinkage, defects, or damages caused during the imprinting of our garments by sources other than our own lettering department. Screenprinting sublimated uniforms can cause color migration. We do not recommend screenprinting on sublimated garments.  
Photography is the property of Under Armour and is not to be used without written authorization.

NOTES:



## COMPRESSION

## FITTED

## LOOSE

# MEN'S



Ultra-tight, second skin fit that keeps you locked in & makes you feel like you can do anything.



A slimmer, athletic cut that allows total mobility but eliminates the bulk of extra fabric.



Fuller cut for complete comfort, total range of motion & greater breathability.

	US SIZE	CHEST (IN)	WAIST (IN)	HIP (IN)
SM	26-28	34-37	29-31	34-36
MD	30-32	37-41	31-34	36-39
LG	34-36	41-44	34-37	39-42
XL	38-40	44-48	37-41	42-46
2XL	42-44	48-52	41-45.5	46-50
3XL	46-48	52-56	45.5-50	50-54
4XL	50-52	56-60	50-54.5	54-58
5XL	54-56	60-64	54.5-59	58-62

## HOW TO MEASURE



**CHEST:** Place the tape measure under your arms at the fullest part of your chest, wrap around your body until your fingers meet and mark the measurement

**WAIST:** Measure around your natural waistline – right above your hips. Be careful not to squeeze too tight to allow a little give.

**HIPS:** With your feet together, measure around the fullest part of your hips to ensure you'll have enough room to move comfortably.

# BOYS

## FITTED

## LOOSE



A slimmer, athletic cut that allows total mobility but eliminates the bulk of extra fabric.



Fuller cut for complete comfort, total range of motion & greater breathability.

	US SIZE	CHEST (IN)	WAIST (IN)	HIP (IN)
YXS	7	25-26	23-24	26-27
YSM	8	26-27	24-25	27-28
YMD	10-12	27-29	25-27	28-31
YLG	14-16	29-32.5	27-30	31-34
YXL	18-20	32.5-35.5	30-33	34-37

## HOW TO MEASURE



**CHEST:** Place the tape measure under your arms at the fullest part of your chest, wrap around your body until your fingers meet and mark the measurement

**WAIST:** Measure around your natural waistline – right above your hips. Be careful not to squeeze too tight to allow a little give.

**HIPS:** With your feet together, measure around the fullest part of your hips to ensure you'll have enough room to move comfortably.

# WOMEN'S

## COMPRESSION



Ultra-tight, second skin fit that keeps you locked in & makes you feel like you can do anything.

## FITTED



Sits close to the skin for a streamlined fit without the squeeze of compression.

## LOOSE



Fuller, more generous cut for enhanced range of motion & an effortlessly relaxed fit.

	US SIZE	CHEST (IN)	WAIST (IN)	HIP (IN)
XS	0-2	32.5-33.5	25.5-27	34.5-36
S	4-6	33.5-36	27-29	36-38
M	8-10	36-38	29-31	38-40
L	12-14	38-41	31-34	40-43
XL	16	41-44	34-37	43-46
2XL	18	44-47	37-40	46-49
3XL	20	47-50	40-43	49-52
4XL	22	50-53	43-46	52-55

## HOW TO MEASURE



**CHEST:** Place the tape measure under your arms at the fullest part of your chest, wrap around your body until your fingers meet and mark the measurement

**WAIST:** Measure around your natural waistline – right above your hips. Be careful not to squeeze too tight to allow a little give.

**HIPS:** With your feet together, measure around the fullest part of your hips to ensure you'll have enough room to move comfortably.

# GIRLS

## FITTED



Sits close to the skin for a streamlined fit without the squeeze of compression.

## LOOSE



Fuller, more generous cut for enhanced range of motion & an effortlessly relaxed fit.

	US SIZE	CHEST (IN)	WAIST (IN)	HIP (IN)
YXS	7	25-26.5	23-24	26-28
YSM	8	26.5-27.5	24-24.5	28-29
YMD	10-12	27.5-30.5	24.5-26.5	29-32.5
YLG	14-16	30.5-34	26.5-30.5	32.5-36.5
YXL	18-20	34-36	30.5-32.5	36.5-38.5

## HOW TO MEASURE



**CHEST:** Place the tape measure under your arms at the fullest part of your chest, wrap around your body until your fingers meet and mark the measurement

**WAIST:** Measure around your natural waistline – right above your hips. Be careful not to squeeze too tight to allow a little give.

**HIPS:** With your feet together, measure around the fullest part of your hips to ensure you'll have enough room to move comfortably.

## WEST

PAT BAUER  
SR. REGIONAL MANAGER  
410.299.3798  
pbauer@underarmour.com  
WA // OR // MT //  
ID // AK // WY

JEFF UTTZ  
626.484.3496  
jeffu@underarmour.com  
CA // NV // HI // AZ // UT

DAN LAABES  
602.882.7241  
dlaabes@underarmour.com  
AZ // NM // West & South TX

HALEY GILLMORE  
303.562.6053  
hgillmore@underarmour.com  
East TX // OK // CO

FRANK WEBER  
618.540.3955  
fweber@underarmour.com  
IL // MO // IA // MN //  
NE // KS // ND // SD //

## EAST

FRANK NUNAN  
SR. REGIONAL MANAGER  
484.576.9777  
fnunan@underarmour.com  
DE // NJ // Philadelphia area

MONTE GIBBS  
662.801.3039  
mgibbs@underarmour.com  
TN // LA // AL //  
MS // AR // KY

DAN WILLIAMS  
352.672.1676  
dwilliams@underarmour.com  
NC // SC // GA // FL

TONY DONOFRIO  
419.356.9742  
tonyd@underarmour.com  
WI // MI // IN // OH // WV

GARY POWERS  
410.746.3790  
gpowers@underarmour.com  
MD // DC // VA // Eastern PA

BOB BARTLETT  
315.380.6505  
bobb@underarmour.com  
NY // Western PA

JAY KELLEHER  
443.615.0462  
jkelleher@underarmour.com  
New England

## COLLEGIATE

TOMMY AMICO  
951.808.0367  
tamico@underarmour.com  
WEST

TODD LOCKLEAR  
410.454.6572  
tlocklear@underarmour.com  
EAST

CHRIS PORTS  
443.220.1009  
cports@underarmour.com  
MID ATLANTIC

BELLA GARONE  
631.307.0009  
isabella.garone@underarmour.com  
NORTHEAST

ALEX BRUEGGEMANN  
410.652.4337  
abrueggemann@underarmour.com  
SOUTH

## LICENSEES

FOUNDER SPORT GROUP  
Stock & Armourfuse Uniforms  
www.underarmourteamuniforms.com  
888.871.0990  
UASatus@foundersportgroup.com

POWERS ATHLETIC  
Custom Uniforms  
www.uacustomuniforms.com  
800.474.6118  
customerservice@powersathletic.com

THE GAME  
Custom Headwear  
www.uateamheadwear.com  
800.723.5656  
customerservice@thegame.com

ALL-STAR  
Protective & Fielding Gloves  
800.777.3810  
uateam@all-starsports.com

USB  
McDavid & Shock Doctor  
Water Bottles  
657.383.4438  
UA@unitedspb.com

SAFILO  
Eyewear  
uateamsportsorders@safilo.com



TEL: 1.888.828.1547 / B2B: ARMOURHOUSE.UNDERARMOUR.COM

### COLLEGIATE

TEAMSPTS COLLEGIATE / TEAMSPTS.COLLEGIATE@UNDERARMOUR.COM

### EAST

TEAM SPORTS SE / TEAMSPORTSSE@UNDERARMOUR.COM  
TEAM SPORTS NE / TEAMSPORTSNE@UNDERARMOUR.COM

### WEST

TEAM SPORTS WC / TEAMSPORTSWC@UNDERARMOUR.COM  
TEAM SPORTS SW / TEAMSPORTSSW@UNDERARMOUR.COM



**ALL TEAM SPORTS ORDERS AND QUESTIONS PLEASE USE THE FOLLOWING:**

1.888.828.1547  
Corporate Headquarters  
1020 Hull Street  
Baltimore, MD 21230

**CORPORATE OFFICE HOURS OF OPERATION**

Monday through Friday, 8:30am – 5:30pm, EST.

**UNDER ARMOUR® B2B – ONLINE ORDERING**

armourhouse.underarmour.com

- 24/7 access to check inventory and place orders
- Ability to track orders and shipments
- Priority product allocation
- Faster processing time

**UNDER ARMOUR® B2B – SUPPORT**

B2B\_support@underarmour.com

**UNDER ARMOUR® RETURN POLICY**

Under Armour® stands behind its gear and EXPECTS nothing less than perfection. If you have received a defective product, an incorrect size, or an incorrect order, please contact us immediately for a return authorization number so that we can quickly process your return and ensure your satisfaction.

ALL RETURNS MUST BE COMPLETED WITHIN 30 DAYS OF RECEIPT AND MUST BE IN REASONABLE CONDITION. ALL RETURNS MUST HAVE THE RA# CLEARLY MARKED ON THE CARTON. ALL RETURNS ARE SUBJECT TO A 15% RE-STOCKING FEE.

Should you need to return or exchange an item, you MUST include your RA#, a copy of your invoice, and an explanation in writing as to why you are returning the item. Send your return to the marked address on your pack list. If you are exchanging merchandise, you are responsible for the cost of returning the product. Original shipping costs are non-refundable. All returned merchandise must be received in new, resalable condition.

**ODH RETURNS:**

Under Armour Returns  
RA#  
7030 Tradepoint Ave  
Dock Door 69  
Sparrows Point, MD 21219

**RIALTO RETURNS:**

Under Armour Returns  
RA#  
2510 W Walnut Ave  
Rialto, CA 92376

**NASHVILLE RETURNS:**

Under Armour Returns  
RA#  
13 Athlete's Way  
Mt Juliet, TN 37122

**UNDER ARMOUR® CANCELLATION POLICY**

Any request for cancellation of an order for UA products must be made, in writing, through the customer's UA Sales Representative. A request to cancel an order must be made more than 30 days before the customer's original desired ship date. All cancellations are subject to UA approval.

**ALL PRICES SET FORTH HEREIN ARE SUBJECT TO CHANGE WITHOUT NOTICE.**

© 2023 Under Armour®. All rights reserved. All trademarks, images, photographs, logos, and graphics are owned or controlled by Under Armour®.

Confidential and business proprietary information for internal Under Armour®, Inc. use only. Reproduction is strictly prohibited.

**UNDER ARMOUR® PERFORMANCE**  
FALL 2024