



# SOFTBALL

Spring 2024





UNDER ARMOUR

**THE ONLY  
WAY IS  
THROUGH.**







## VISION

---

TO INSPIRE YOU WITH PERFORMANCE  
SOLUTIONS YOU NEVER KNEW  
YOU NEEDED BUT CAN'T IMAGINE  
LIVING WITHOUT.

## MISSION

---

UNDER ARMOUR  
MAKES YOU BETTER.

## SOFTBALL —

- 002 SOFTBALL UNIFORMS
- 030 SOFTBALL APPAREL
- 034 SOFTBALL FOOTWEAR
- 036 SOFTBALL SOCKS
- 037 SOFTBALL ACCESSORIES
- 038 SOFTBALL BAGS
- 040 SOFTBALL PROTECTIVE
- 043 SOFTBALL HEADWEAR
- 044 SOFTBALL EYEWEAR
- 050 WOMEN'S AF TRAINING
- 056 UNIFORM ORDERING INFO





# SOFTBALL GAMEDAY SELECT

- Select Custom UA Team Uniforms
- Set jersey and pant pricing

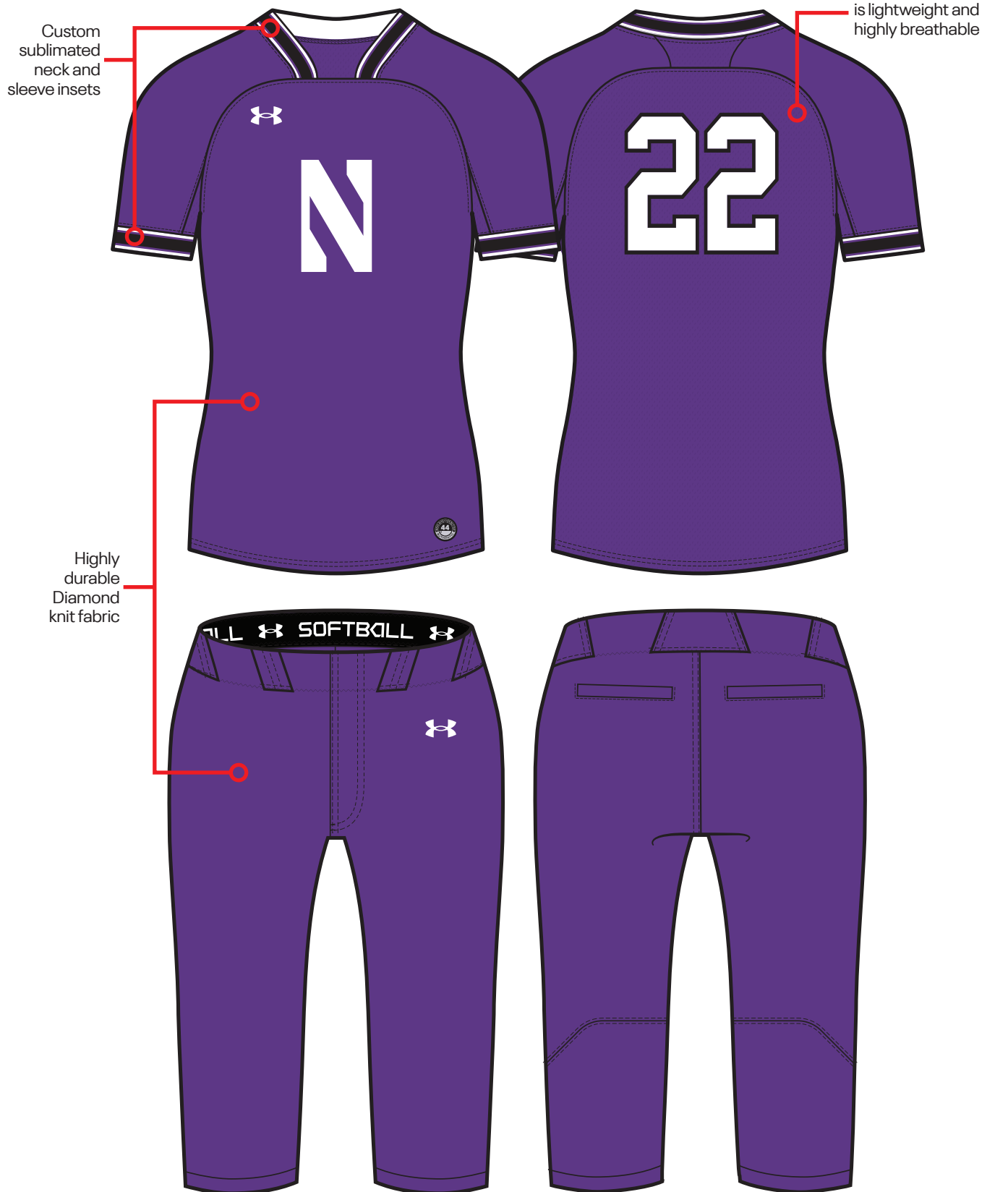
## GAMEDAY SELECT PROGRAM DETAILS

- Jersey - fully decorated includes:
  - Team name (1 or 2 color Armourfuse® twill)
  - Front and back numbers (1 or 2 color Armourfuse® twill)
  - Heater: Sublimated inserts at sleeve ends and around neck
  - Yard: Braided or piped at sleeve ends and around placket or neck (1/2" or 3/16")
- Pant - fully decorated includes:
  - Heater: Sublimated insert down side seam
  - Yard: Braided or piped down side seam (1/2" or 3/16")
- All catalog fonts included
- 2", 3" or 4" Team Name // 3" or 4" Front Number // 6" or 8" Back Number
- Additional details on page 60





# GAMEDAY SELECT





**NEW**

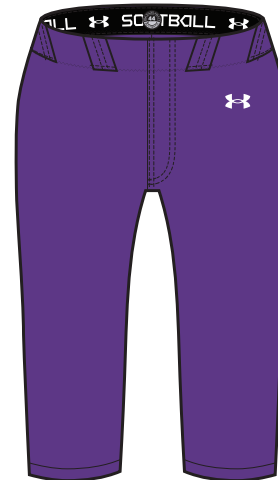
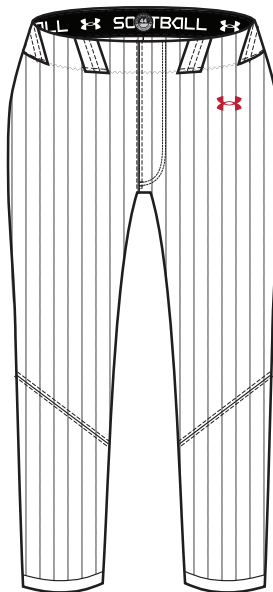
## HEATER JERSEYS

FIRST SHIP: 10/25/2023 // XS-2XL, OVERSIZE 3XL

2-BUTTON	SIZE	FABRIC	PRICE
US032JW (W)	XS-2XL	SOLID	\$172.00
USP32JW (W)	XS-2XL	PINSTRIPES	\$202.00
V-NECK	DESIGN	FABRIC	PRICE
US020JW (W)	XS-2XL	SOLID	\$172.00
USP20JW (W)	XS-2XL	PINSTRIPES	\$202.00

- 100% Polyester
- Diamond Knit Front + Diamond Mesh Back (Pinstripe version = Diamond Knit Back)
- Functional top two buttons or modern v-neck construction
- Sublimated inserts around neck and sleeves
- Size SM Measurements: front body length 26.50", sleeve length from center neck 16", across chest width from under armhole 19.5"
- Modern raglan sleeves shaped to increase shoulder mobility and full mesh back for overall comfort and breathability

OVERSIZED SURCHARGE +\$5 PER SIZE



**2-BUTTON**

SHOWN WITH MID-CALF PANT

**V-NECK**

SHOWN WITH KNICKER PANT

**NEW**

## HEATER PANTS

FIRST SHIP: 10/25/2023 // XS-2XL, OVERSIZE 3XL

MID-CALF	DESIGN	FABRIC	PRICE
US034PW (W)	XS-2XL	SOLID	\$146.00
USP34PW (W)	XS-2XL	PINSTRIPES	\$176.00
KNICKER	DESIGN	FABRIC	PRICE
US023PW (W)	XS-2XL	SOLID	\$146.00
USP23PW (W)	XS-2XL	PINSTRIPES	\$176.00

- 100% Polyester - Diamond Knit
- Mid-Calf Pant inseam = 22"  
Kicker inseam = 18"
- 2-ply reinforced knees + hamstrings
- Sublimated side inserts
- Mid-Calf pant designed to end just below bulk of the calf muscle when pulled down tight
- Custom inseams available on all pants  
-2" or +2" (no charge)

OVERSIZED SURCHARGE +\$5 PER SIZE

### JERSEY AND PANT COLORS:

WHT	VWH	BBG	GPH	BLK	PUR	MDN
RYL	VBL	FGR	DKO	RED	MAR	CRD

### PINSTRIPES:

WHT/BLK	WHT/MDN	WHT/RYL	WHT/RED
---------	---------	---------	---------

### NEW COLORS

BBG/BLK	BBG/MDN	BBG/RYL	BBG/RED
VWH/BLK	VWH/MDN	VWH/RYL	VWH/RED

- Dyed ground with sublimated pinstripes





**NEW**

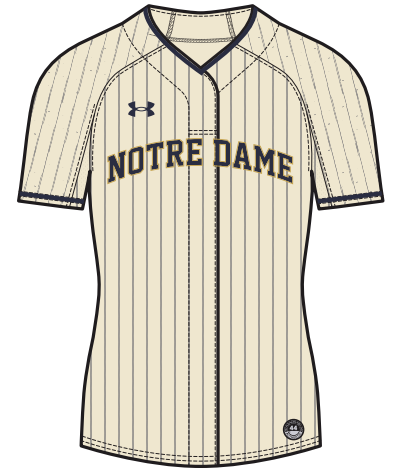
## YARD FAUX PLACKET JERSEY

FIRST SHIP: 10/25/2023 //  
XS-2XL, OVERSIZE 3XL

FULL PLACKET	DESIGN	FABRIC	PRICE
US031JW (W)	XS-2XL	SOLID	\$166.00
USP31JW (W)	XS-2XL	PINSTRIPES	\$196.00

- 100% Polyester
- Diamond Knit Front + Diamond Mesh Back (Pinstripe version = Diamond Knit Back)
- Fake Placket front closure with functional top two buttons
- Size SM Measurements: front body length 26.50", sleeve length from center neck 16", across chest width from under armhole 19.5"
- Modern raglan sleeves shaped to increase shoulder mobility and full mesh back for overall comfort and breathability

OVERSIZED SURCHARGE +\$5 PER SIZE



**NEW**

## YARD PANTS

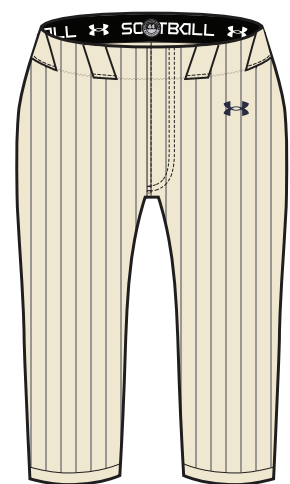
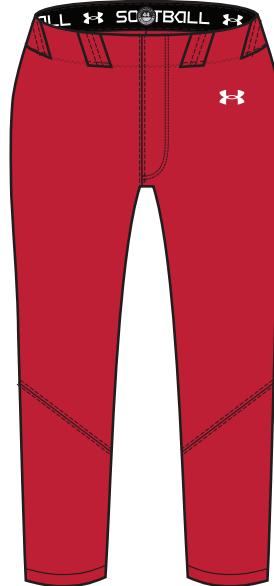
FIRST SHIP: 10/25/2023 //  
XS-2XL, OVERSIZE 3XL

MID-CALF	DESIGN	FABRIC	PRICE
US033PW (W)	XS-2XL	SOLID	\$136.00
USP33PW (W)	XS-2XL	PINSTRIPES	\$166.00

KNICKER	DESIGN	FABRIC	PRICE
US027PW (W)	XS-2XL	SOLID	\$136.00
USP27PW (W)	XS-2XL	PINSTRIPES	\$166.00

- 100% Polyester - Diamond Knit
- Mid-Calf Pant inseam = 22"  
Knicker inseam = 18"
- 2-ply reinforced knees + hamstrings
- Mid-Calf pant designed to end just below bulk of the calf muscle when pulled down tight
- Custom inseams available on all pants  
-2" or +2" (no charge)

OVERSIZED SURCHARGE +\$5 PER SIZE



**FULL PLACKET**

SHOWN WITH MID-CALF PANT

**FULL PLACKET**

SHOWN WITH KNICKER PANT

### JERSEY AND PANT COLORS:

WHT	VWH	BBG	GPH	BLK	PUR	MDN
RYL	VBL	FGR	DKO	RED	MAR	CRD

### PINSTRIPES:

WHT/BLK	WHT/MDN	WHT/RYL	WHT/RED
---------	---------	---------	---------

### NEW COLORS

BBG/BLK	BBG/MDN	BBG/RYL	BBG/RED
VWH/BLK	VWH/MDN	VWH/RYL	VWH/RED

- Dyed ground with sublimated pinstripes







# SOFTBALL ARMOURFUSE

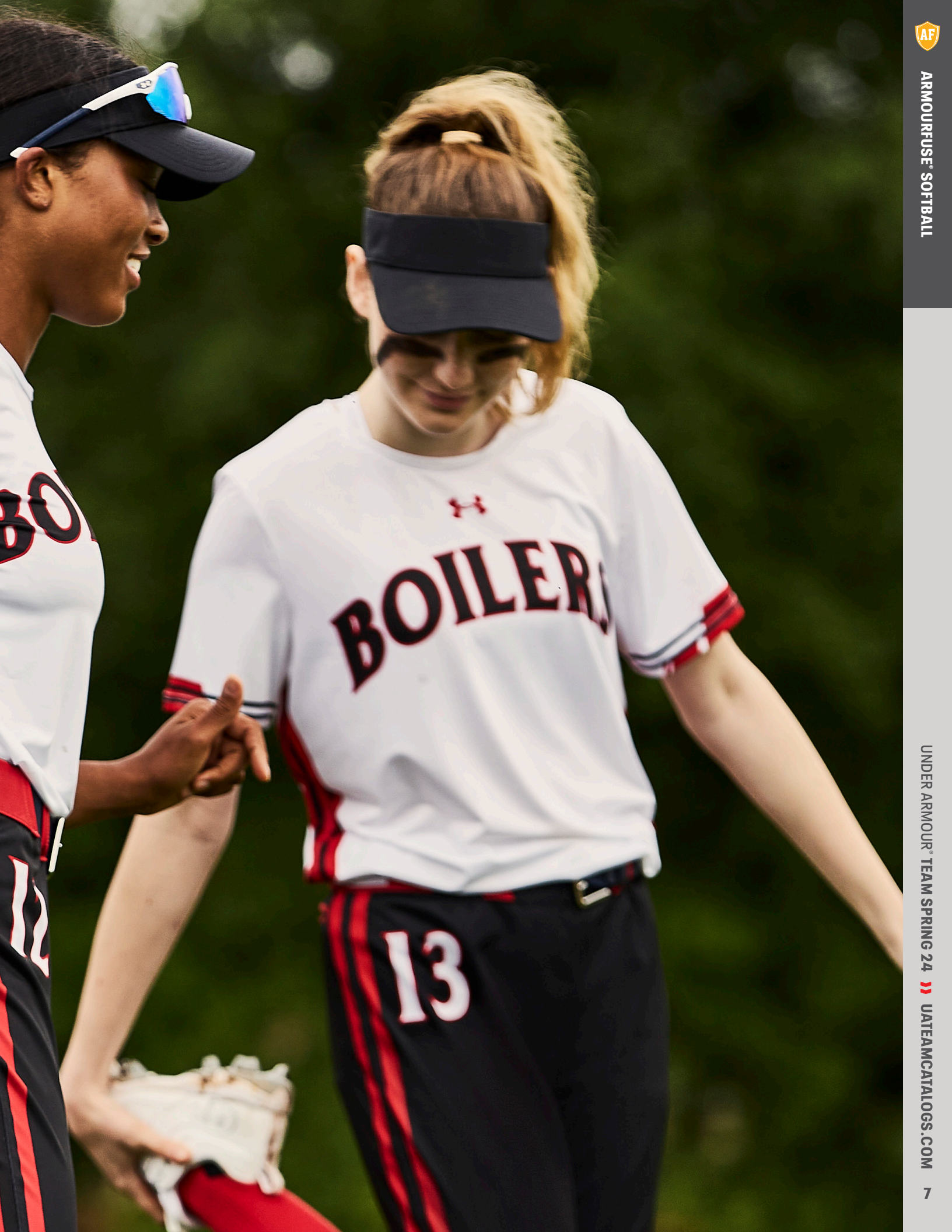
- Brilliant, vibrant team colors permanently fused directly into textiles
- Limitless customization, all-inclusive pricing with exclusive UA designs and customized prints
- 37 different colors and 16 prints available
- 6 piece minimum order

**Showtime Jerseys:** 100% Polyester featuring a Diamond Knit front & Diamond Mesh back for breath ability.

**Gametime Jerseys:** 87% Polyester, 13% Elastane, featuring a full body lightweight Utility Mesh.







ARMOURFUSE® SOFTBALL

UNDER ARMOUR® TEAM SPRING 24 » [UATEAMCATALOGS.COM](http://UATEAMCATALOGS.COM)



## AF SHOWTIME PINSTRIPE JERSEYS

XS-2XL, OVERSIZE 3XL

FAUX PLACKET	SIZE	PACKAGE*	PRICE
UJSJX2W (W)	XS-2XL	SUBLIMATED	\$122.00
		1-COLOR TWILL	\$171.00
		2-COLOR TWILL	\$181.00
V-NECK	SIZE	PACKAGE*	PRICE
UJSJV3W (W)	XS-2XL	SUBLIMATED	\$106.50
		1-COLOR TWILL	\$155.50
		2-COLOR TWILL	\$165.50

- 100% Polyester - Diamond Knit Front  
+ Diamond Mesh Back
- Size SM Measurements: body length 28",  
sleeve length 8.5", across chest width 18.5"

\*PACKAGE INCLUDES TEAM NAME + FRONT & BACK NUMBERS  
ADDITIONAL TWILL OPTIONS FOUND ON PAGE 59



TURNER



CAMDEN

AVAILABLE IN FAUX PLACKET ONLY

## AF GAMETIME PINSTRIPE JERSEYS

XS-2XL, OVERSIZE 3XL, YSM-YXL

FAUX PLACKET	SIZE	PACKAGE*	PRICE
UJSJX1W (W)	XS-2XL	SUBLIMATED	\$106.50
		1-COLOR TWILL	\$155.50
		2-COLOR TWILL	\$165.50
UJBX1Y (Y)	YSM-YXL	SUBLIMATED	\$101.00
V-NECK	SIZE	PACKAGE*	PRICE
UJSJV2W (W)	XS-2XL	SUBLIMATED	\$91.00
		1-COLOR TWILL	\$140.00
		2-COLOR TWILL	\$150.00
UJBV2Y (Y)	YSM-YXL	SUBLIMATED	\$85.50

- 87% Polyester, 13% Elastane - Utility Mesh
- Size SM Measurements: body length 28",  
sleeve length 8.5", across chest width 18.5"

\*PACKAGE INCLUDES TEAM NAME + FRONT & BACK NUMBERS  
ADDITIONAL TWILL OPTIONS FOUND ON PAGE 59



SHEA



MURPHY

AVAILABLE IN V-NECK ONLY

OVERSIZED SURCHARGE +\$5 PER SIZE // EXTENDED/SHORTENED LENGTHS OFFERED, SEE PAGE 61 FOR MORE INFO





OVERSIZED SURCHARGE +\$5 PER SIZE // EXTENDED/SHORTENED LENGTHS OFFERED, SEE PAGE 61 FOR MORE INFO



ARMOURFUSE® UNIFORMS // ORDERING INFORMATION AND CUSTOMER SERVICE: 1-888-871-0990 // [www.underarmourteamuniforms.com](http://www.underarmourteamuniforms.com)

FILL-IN LIFECYCLE TIMING FOUND ON PAGE 63. DECORATION OPTIONS AND ORDERING INFORMATION ARE AVAILABLE ON PAGES 56-63.



## MODIFIED ARMOURFUSE SOFTBALL PANTS

XS-2XL, OVERSIZE 3XL, YSM-YXL

STYLE	SIZE	FABRIC	PRICE
UJSPSKW (W)	XS-2XL	SUBLIMATED	\$118.50
UJSPSKG (G)	YSM-YXL	SUBLIMATED	\$108.50

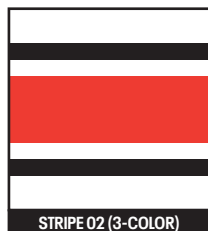
- 100% Polyester-Sublimated
- Inseam = 18"
- Available in Pinstripes/Solid
- Side Seam Team Stripe Available
- Can be paired with Showtime or Gametime Jersey
- No zipper for legging-like fit
- +2" or -2" inseam available

### UPDATED FIT

Starting in SS24 ALL fill-ins and new orders will have updated:

- Reinforced 2-Ply Rear Slide Zone in the hamstrings for added durability
- Upgraded Elastic Waistband

IF YOU HAVE QUESTIONS ON SLEEVE STRIPE PAIRINGS  
PLEASE ASK A QUALIFIED SALES PROFESSIONAL



STRIPE 02 (3-COLOR)

UA RECOMMENDS STRIPE 02 TO MATCH  
CAMDEN 2 AND SHEA 5 JERSEY DESIGNS



STRIPE 09 (3-COLOR)

UA RECOMMENDS STRIPE 09 TO MATCH  
CAMDEN 1 AND SHEA 3 JERSEY DESIGNS

ALL CATALOG STRIPES (01-09) ARE 2" WIDE AND  
AVAILABLE FOR SOLID AND PINSTRIPE PANTS (SEE PAGE 61)  
TURNER STRIPE .5" WIDE AVAILABLE FOR SOLID  
AND PINSTRIPE PANTS



TURNER

NEW DESIGN FIRST SHIP: 10/25/2023

OVERSIZED SURCHARGE +\$5 PER SIZE // EXTENDED/SHORTENED LENGTHS OFFERED, SEE PAGE 61 FOR MORE INFO



ARMOURFUSE™ UNIFORMS // ORDERING INFORMATION AND CUSTOMER SERVICE: 1-888-871-0990 // [www.underarmourteamuniforms.com](http://www.underarmourteamuniforms.com)

FILL-IN LIFECYCLE TIMING FOUND ON PAGE 63. DECORATION OPTIONS AND ORDERING INFORMATION ARE AVAILABLE ON PAGES 56-63.

# PANTS



ARMOURFUSE® SOFTBALL

UNDER ARMOUR® TEAM SPRING 24 UATEAMCATALOGS.COM

11



**SOLID**



**PINSTRIPLE**

OVERSIZED SURCHARGE +\$5 PER SIZE // EXTENDED/SHORTENED LENGTHS OFFERED, SEE PAGE 61 FOR MORE INFO



ARMOURFUSE® UNIFORMS // ORDERING INFORMATION AND CUSTOMER SERVICE: 1-888-871-0990 // [www.underarmourteamuniforms.com](http://www.underarmourteamuniforms.com)

FILL-IN LIFECYCLE TIMING FOUND ON PAGE 63. DECORATION OPTIONS AND ORDERING INFORMATION ARE AVAILABLE ON PAGES 56-63.



## AF SHOWTIME FAUX PLACKET JERSEY

XS-2XL, OVERSIZE 3XL

STYLE	SIZE	PACKAGE*	PRICE
UJSJX2W (W)	XS-2XL	SUBLIMATED	\$122.00
		1-COLOR TWILL	\$171.00
		2-COLOR TWILL	\$181.00

- 100% Polyester - Diamond Knit Front  
+ Diamond Mesh Back
- Faux Placket front closure with functional top  
two buttons
- Size SM Measurements: body length 28",  
sleeve length 8.5", across chest width 18.5"

\*PACKAGE INCLUDES TEAM NAME + FRONT & BACK NUMBERS  
ADDITIONAL TWILL OPTIONS FOUND ON PAGE 59



**STITCHED**

**NEW DESIGN FIRST SHIP: 10/25/2023**



**WINDMILL**



**COMISKY**

OVERSIZED SURCHARGE +\$5 PER SIZE // EXTENDED/SHORTENED LENGTHS OFFERED, SEE PAGE 61 FOR MORE INFO





TURNER



CAMDEN



SHEA

OVERSIZED SURCHARGE +\$5 PER SIZE // EXTENDED/SHORTENED LENGTHS OFFERED, SEE PAGE 61 FOR MORE INFO



ARMOURFUSE® UNIFORMS // ORDERING INFORMATION AND CUSTOMER SERVICE: 1-888-871-0990 // [www.underarmourteamuniforms.com](http://www.underarmourteamuniforms.com)

FILL-IN LIFECYCLE TIMING FOUND ON PAGE 63. DECORATION OPTIONS AND ORDERING INFORMATION ARE AVAILABLE ON PAGES 56-63.



## AF SHOWTIME V-NECK JERSEY

XS-2XL, OVERSIZE 3XL

STYLE	SIZE	PACKAGE*	PRICE
UJSJV3W (W)	XS-2XL	SUBLIMATED	\$106.50
		1-COLOR TWILL	\$155.50
		2-COLOR TWILL	\$165.50

- 100% Polyester - Diamond Knit Front  
+ Diamond Mesh Back
- Size SM Measurements: body length 28",  
sleeve length 8.5", across chest width 18.5"

\*PACKAGE INCLUDES TEAM NAME + FRONT & BACK NUMBERS  
ADDITIONAL TWILL OPTIONS FOUND ON PAGE 59



MOONSHOT

NEW DESIGN FIRST SHIP: 10/25/2023



WINDMILL



COMISKY



SCOUT

OVERSIZED SURCHARGE +\$5 PER SIZE // EXTENDED/SHORTENED LENGTHS OFFERED, SEE PAGE 61 FOR MORE INFO





CAMDEN



SHEA



MURPHY

OVERSIZED SURCHARGE +\$5 PER SIZE // EXTENDED/SHORTENED LENGTHS OFFERED, SEE PAGE 61 FOR MORE INFO



ARMOURFUSE® UNIFORMS // ORDERING INFORMATION AND CUSTOMER SERVICE: 1-888-871-0990 // [www.underarmourteamuniforms.com](http://www.underarmourteamuniforms.com)

FILL-IN LIFECYCLE TIMING FOUND ON PAGE 63. DECORATION OPTIONS AND ORDERING INFORMATION ARE AVAILABLE ON PAGES 56-63.



## AF GAMETIME FAUX PLACKET JERSEY

XS-2XL, OVERSIZE 3XL, YSM-YXL

STYLE	SIZE	PACKAGE*	PRICE
UJSJXIW (W)	XS-2XL	SUBLIMATED	\$106.50
		1-COLOR TWILL	\$155.50
		2-COLOR TWILL	\$165.50
UJBXITY (Y)	YSM-YXL	SUBLIMATED	\$101.00

- 87% Polyester, 13% Elastane - Utility Mesh
- Faux Placket front closure with functional top two buttons
- Size SM Measurements: body length 28", sleeve length 8.5", across chest width 18.5"

\*PACKAGE INCLUDES TEAM NAME + FRONT & BACK NUMBERS  
ADDITIONAL TWILL OPTIONS FOUND ON PAGE 59



STITCHED

NEW DESIGN FIRST SHIP: 10/25/2023



WINDMILL



COMISKY

OVERSIZED SURCHARGE +\$5 PER SIZE // EXTENDED/SHORTENED LENGTHS OFFERED, SEE PAGE 61 FOR MORE INFO





TURNER



CAMDEN



SHEA

OVERSIZED SURCHARGE +\$5 PER SIZE // EXTENDED/SHORTENED LENGTHS OFFERED, SEE PAGE 61 FOR MORE INFO



ARMOURFUSE® UNIFORMS // ORDERING INFORMATION AND CUSTOMER SERVICE: 1-888-871-0990 // [www.underarmourteamuniforms.com](http://www.underarmourteamuniforms.com)

FILL-IN LIFECYCLE TIMING FOUND ON PAGE 63. DECORATION OPTIONS AND ORDERING INFORMATION ARE AVAILABLE ON PAGES 56-63.

## AF GAMETIME V-NECK JERSEY

XS-2XL, OVERSIZE 3XL, YSM-YXL

STYLE	SIZE	PACKAGE*	PRICE
UJSJV2W (W)	XS-2XL	SUBLIMATED	\$91.00
		1-COLOR TWILL	\$140.00
		2-COLOR TWILL	\$150.00
UJBV2Y (Y)	YSM-YXL	SUBLIMATED	\$85.50

- 87% Polyester, 13% Elastane - Utility Mesh
- Size SM Measurements: body length 28", sleeve length 8.5", across chest width 18.5"

\*PACKAGE INCLUDES TEAM NAME + FRONT & BACK NUMBERS  
ADDITIONAL TWILL OPTIONS FOUND ON PAGE 59



MOONSHOT

NEW DESIGN FIRST SHIP: 10/25/2023



WINDMILL



COMISKY



SCOUT

OVERSIZED SURCHARGE +\$5 PER SIZE // EXTENDED/SHORTENED LENGTHS OFFERED, SEE PAGE 61 FOR MORE INFO





CAMDEN



SHEA



MURPHY

OVERSIZED SURCHARGE +\$5 PER SIZE // EXTENDED/SHORTENED LENGTHS OFFERED, SEE PAGE 61 FOR MORE INFO



ARMOURFUSE® UNIFORMS // ORDERING INFORMATION AND CUSTOMER SERVICE: 1-888-871-0990 // [www.underarmourteamuniforms.com](http://www.underarmourteamuniforms.com)

FILL-IN LIFECYCLE TIMING FOUND ON PAGE 63. DECORATION OPTIONS AND ORDERING INFORMATION ARE AVAILABLE ON PAGES 56-63.

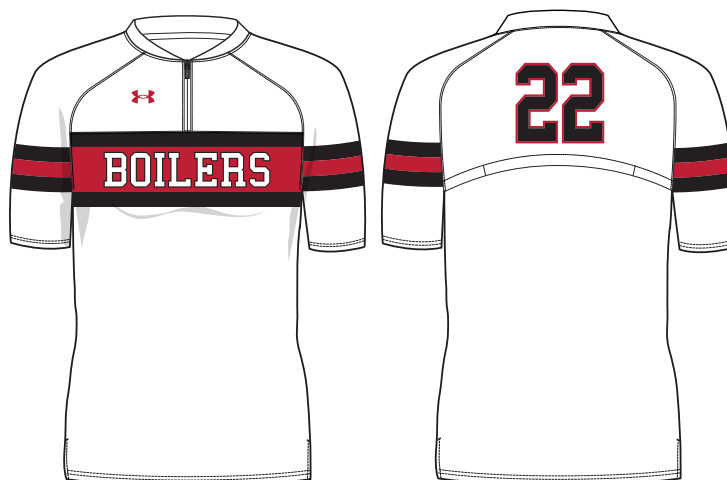
## CAGE JACKET

**NEW****ARMOURFUSE CAGE JACKET**

FIRST SHIP: 10/25/2023 //  
XS-2XL, OVERSIZE 3XL, YXS-YXL

STYLE	SIZE	PRICE
UJSTZW (W)	XS-2XL	\$150.00
UJSTZG (G)	YXS-YXL	\$135.00

- Sublimated stretch woven fabric
- 2-ply collar, vented back, side-vent at the hem to provide room for belted softball pant
- Loose fit for shoulder mobility and to allow for wearing over a jersey
- Ability to add custom logo, team name, player name and player number

**HENLEY****WINDMILL**

OVERSIZED SURCHARGE +\$5 PER SIZE

ARMOURFUSE™ UNIFORMS // ORDERING INFORMATION AND CUSTOMER SERVICE: 1-888-871-0990 // [www.underarmourteamuniforms.com](http://www.underarmourteamuniforms.com)

FILL-IN LIFECYCLE TIMING FOUND ON PAGE 63. DECORATION OPTIONS AND ORDERING INFORMATION ARE AVAILABLE ON PAGES 56-63.



NOTES:



# SOFTBALL STOCK

- Unique designs and advanced technology in stock
- Pre-set designs, ready to ship
- Best-in-class stock fabrications for all levels of play



## PACKAGE DECORATION

	1COLOR	2COLOR
<b>SCREENPRINT</b>	<b>\$17.50</b>	<b>\$27.50</b>
Team Name, Front/Back Numbers		
<b>TACKLE TWILL</b>	<b>\$49.00</b>	<b>\$59.00</b>
Team Name, Front/Back Numbers		

Additional Stock Options on page 59-60.



## ICON FAUX PLACKET JERSEY

XS-2XL, YSM-YXL

STYLE	SIZE	PACKAGE	PRICE
USJ114W (W)	XS-2XL	BLANK	\$55.00
		1-COLOR TWILL	\$104.00
		2-COLOR TWILL	\$114.00
UBJ114Y (Y)	YSM-YXL	BLANK	\$49.50

- 100% Polyester - Diamond Knit Front + Diamond Mesh Back
- Size SM Measurements: body length 28", sleeve length 8.5", across chest width 18.5"

UA RECOMMENDS THAT THIS STYLE BE DECORATED WITH TACKLE TWILL ONLY

\*PACKAGE INCLUDES TEAM NAME + FRONT & BACK NUMBERS

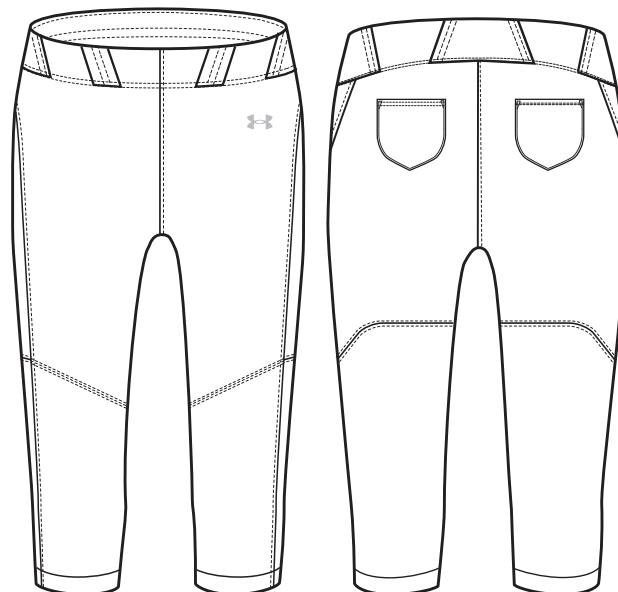


## THE ACE BELTED KNICKER PANT

XXS-2XL, YSM-YXL

STYLE	SIZE	PACKAGE	PRICE
USP52KW (W)	XS-2XL	BLANK	\$67.00
USP52KG (G)	YSM-YXL	BLANK	\$57.00

- 100% Polyester- Diamond Knit
- Elastic waist band with beltloops
- Knicker Inseam (W) 18.5"
- 2-Ply reinforced knee and slide zone



## ICON FAUX PLACKET JERSEY

XS-2XL, YSM-YXL

STYLE	SIZE	PACKAGE	PRICE
USJ114W (W)	XS-2XL	BLANK	\$55.00
		1-COLOR TWILL	\$104.00
		2-COLOR TWILL	\$114.00
UBJ114Y (Y)	YSM-YXL	BLANK	\$49.50

- 100% Polyester - Diamond Knit Front + Diamond Mesh Back
- Size SM Measurements: body length 28", sleeve length 8.5", across chest width 18.5"

UA RECOMMENDS THAT THIS STYLE BE DECORATED WITH TACKLE TWILL ONLY

\*PACKAGE INCLUDES TEAM NAME + FRONT & BACK NUMBERS

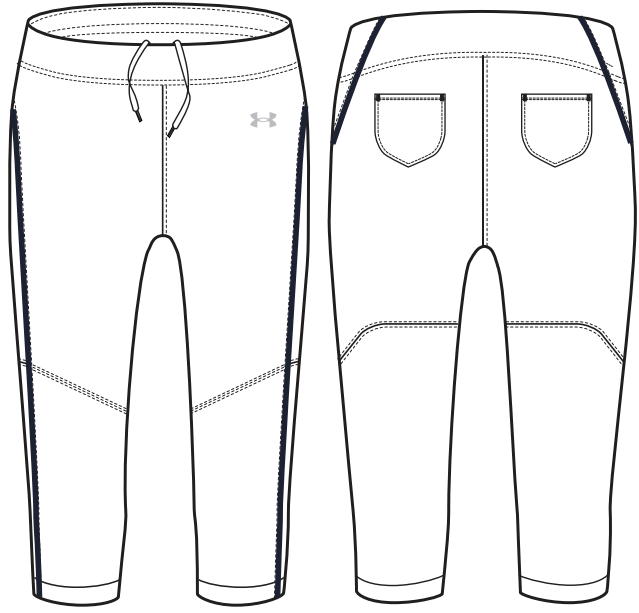


## THE ACE BELTLESS KNICKER PANT

XS-2XL

STYLE	SIZE	PACKAGE	PRICE
USP123W (W)	XS-2XL	BLANK	\$57.00

- 100% Polyester- Diamond Knit
- Beltless elastic waist band with drawstring
- Kicker Inseam (W) 18.5"
- 2-Ply reinforced knee





## ICON KNICKER PANT

XS-2XL, YSM-YXL

STYLE	SIZE	PACKAGE	PRICE
USP522W (W)	XS-2XL	BLANK	\$55.00
USP522G (G)	YSM-YXL	BLANK	\$49.50

- 100% Polyester - Diamond Knit
- Knicker inseam (W) 19" (G) 15"
- 2-ply reinforced knee

AFTER-BRAID +\$17. SEE PAGE 60 FOR DETAILS



SHOWN WITH ICON FAUX PLACKET  
SHOWN WITH AFTER-BRAID OPTION ON JERSEY AND PANT  
(NOT INCLUDED IN PRICE)



## IGNITE 2-BUTTON JERSEY

XS-2XL, YSM-YXL

STYLE	SIZE	PACKAGE	PRICE
USJ113W (W)	XS-2XL	BLANK	\$49.50
		1-COLOR SCREEN	\$67.00
		2-COLOR SCREEN	\$77.00
		1-COLOR TWILL	\$98.50
		2-COLOR TWILL	\$108.50
UBJ113Y (Y)	YSM-YXL	BLANK	\$44.50

- 100% Polyester - Base Mesh
- Size SM Measurements: body length 28", sleeve length 8.5", across chest width 18.5"

\*PACKAGE INCLUDES TEAM NAME + FRONT & BACK NUMBERS



SHOWN WITH ICON KNICKER PANT  
PANT SHOWN WITH AFTER-BRAID (NOT INCLUDED IN PRICE)



## IGNITE V-NECK JERSEY

XS-2XL, YSM-YXL

STYLE	SIZE	PACKAGE	PRICE
USJ112W (W)	XS-2XL	BLANK	\$39.50
		1-COLOR SCREEN	\$57.00
		2-COLOR SCREEN	\$67.00
		1-COLOR TWILL	\$88.50
		2-COLOR TWILL	\$98.50
UBJ112Y (Y)	YSM-YXL	BLANK	\$34.00

- 100% Polyester - Base Mesh
- Size SM Measurements: body length 28", sleeve length 8.5", across chest width 18.5"

\*PACKAGE INCLUDES TEAM NAME + FRONT & BACK NUMBERS



SHOWN WITH ICON KNICKER PANT



This image shows a single sheet of white paper with horizontal ruling lines. The lines are evenly spaced and run across the width of the page. There are no margins, text, or other markings on the paper.

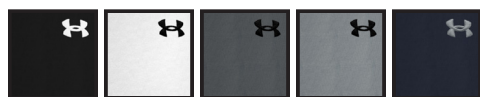


NOTES:

**1375665****UA W'S UTILITY SOFTBALL PANT 22****\$30.00 | LOOSE | XS-2XL****GIRLS: 1375667 | \$25.00 | YXS-YXL****FIRST SHIP: C/O**

Not all softball pants are made the same. These are light enough for hot weather, but still give you the durability, stretch, and protection for a full season.

- Lightweight, durable, performance fabric built for gameday comfort
- Material wicks sweat & dries really fast
- Dual-layer knees & upper back of legs deliver added durability
- Soft, elastic waistband with belt loops for the perfect fit
- Encased elastic hem helps bottoms stay in place
- Open back pockets
- Inseam: 17.5"

**100% POLYESTER****GIRLS OFFERED IN ALL COLORS****heatgear™**001  
BLK/WHT100  
WHT/BLK012  
PITCH/BLK075  
BBG/BLK410  
MDN/PITCH



**NEW**

**1379830**

**UA W'S SOFTBALL SLIDER**

\$40.00 | **COMPRESSION** | XS-2XL

**GIRLS: 1379832** | \$35.00 | YXS-YXL

FIRST SHIP: 6/20/2023

- Super-light & breathable HeatGear® fabric delivers superior coverage without weighing you down
- Interior foam spacer padding on back panel for added protection
- Material wicks sweat & dries really fast
- 4-way stretch material moves better in every direction
- Wide flat elastic waistband is super-comfortable & sits just right on the hips
- Inseam: 6.5"

87% POLYESTER, 13% ELASTANE

GIRLS OFFERED IN ALL COLORS

**heatgear**



001  
BLK

100  
WHT



**1376114**

**UA W'S SOFTBALL BELT**

\$13.00 | OSFA, ADJUSTABLE

FIRST SHIP: C/O

- Elastic webbing with polyurethane
- Custom UA branded belt loop

70% ELASTIC, 30% PU



001  
BLK

100  
WHT

019  
CHC

410  
MDN

600  
RED

400  
RYL

475  
CBL

**1375662****UA W'S SOFTBALL 2N1 SHORT 22****\$40.00 | COMPRESSION | XS-2XL****FIRST SHIP: 6/20/2022**

- Lightweight stretch-woven fabric is durable but breathable
- Built-in HeatGear® compression shorts for added coverage & support
- 4-way stretch material moves better in every direction
- Anti-odor technology prevents the growth of odor-causing microbes
- Soft knit waistband and side panels for added mobility & comfort
- Side drop-in pocket on liner shorts

**OUTER SHORT: 100% POLYESTER****INNER SHORT: 87% POLYESTER, 13% ELASTANE****heatgear™**001  
BLK100  
WHI411  
MDN475  
CBL



**1375666**

## UA W'S SOFTBALL CREW PULLOVER 22

\$65.00 | **LOOSE** | SM-2XL

FIRST SHIP: C/O

- Soft, textured ColdGear® knit fabric moves with you & provides exceptional warmth
- Material wicks sweat & dries really fast
- Mesh underarm panels for strategic breathability
- Open hand pockets
- Rip stitch convertible sleeves & collar so you can cut at the elbow seam for a short sleeve
- Shaped hem

86% POLYESTER, 14% ELASTANE

**coldgear**



**NEW**

**1379941**

## UA G'S SOFTBALL CREW PULLOVER 22

\$45.00 | **LOOSE** | YSM-YXL

FIRST SHIP: 6/20/2023

- Soft, textured ColdGear® knit fabric moves with you & provides exceptional warmth
- Material wicks sweat & dries really fast
- Rip stitch convertible sleeves & collar so you can cut at the elbow seam for a short sleeve
- Shortened cuffs so you can wear with batting gloves
- Shaped, loose bottom hem for a comfortable fit with belted baseball pants
- Raglan sleeves

86% POLYESTER, 14% ELASTANE

**coldgear**



**NEW****3026601****UA W'S GLYDE 2.0 MT****\$95.00 | SIZES: 5.5-12****FIRST SHIP: 7/20/2023**

- Textile upper with PU coating provides sneaker comfort with superior durability
- Elevated plush pocket in heel for added comfort & locked in feel
- Charged Cushioning midsole converts impact into explosive speed & power on the diamond
- UA microtips technology provides comfort, more traction & less weight underfoot
- 10 strategically placed cleats on perimeter for more points of ground contact to reduce cleat pressure

**NEW****3026603****UA W'S GLYDE 2.0 MT TPU****\$85.00 | SIZES: 5.5-12****FIRST SHIP: 7/20/2023**

- Textile upper with PU coating provides sneaker comfort with superior durability
- Elevated plush pocket in heel for added comfort & locked in feel
- Charged Cushioning midsole converts impact into explosive speed & power on the diamond
- UA microtips technology provides comfort, more traction & less weight underfoot
- 10 strategically placed cleats on perimeter for more points of ground contact to reduce cleat pressure



**NEW**

**3026605**

**UA W'S GLYDE 2.0 RM**

\$45.00 | SIZES: 5.5-12

**GIRLS: 3026607** | \$35.00 | 10K, 11K, 12K, 13K, 1-6

FIRST SHIP: 7/20/2023

- Rubber molded cleats provide optimal traction & durability on all field surfaces
- Padded collar & heel construction for ultimate step-in comfort
- Full length EVA midsole for added comfort, cushioning that evenly distributes cleat pressure underfoot

GIRLS OFFERED IN ALL COLORS



001  
BLK/BLK/WHT



100  
WHT/WHT/MSV



101  
WHT/TPK/WHT

**NEW**

**3026604**

**UA W'S GLYDE 2.0 TURF**

\$85.00 | SIZES: 5.5-12

FIRST SHIP: 7/20/2023

- Textile upper with PU coating provides sneaker comfort with superior durability
- Elevated plush pocket in heel for added comfort & locked in feel
- Charged Cushioning midsole converts impact into explosive speed & power on the diamond
- Rubber nubbed outsole provides elite traction



001  
BLK/BLK/WHT



100  
WHT/WHT/MSV



# SOCKS

**1367822**

## UA TEAM OVER-THE-CALF UNISEX

**\$14.00 | SINGLE PAIR**

**MD** (YOUTH 4.5-7 / MEN'S 7-8.5 / WOMEN'S 6-10)

**LG** (MEN'S 8.5-13 / WOMEN'S 10-14)

**XL** (MEN'S 13-16)

**YOUTH: 1367823 | \$12.00**

**SM** (YOUTH 13.5K-4.5)

**FIRST SHIP: C/O**

- Medium cushioning throughout foot for comfort & protection
- Mesh panels on top of foot for added breathability
- Durable material wicks sweat & dries really fast
- Anti-odor technology helps prevent odor in the sock
- Embedded arch support helps reduce foot fatigue
- Fitted heel contours around your foot for a better fit
- Left/Right specific fit

**90% POLYESTER, 7% NYLON, 3% ELASTANE**

**Y = YOUTH OFFERING**



**001 Y**  
BLK/GPH/  
WHT

**040 Y**  
GPH/BLK/  
BLK

**100 Y**  
WHT/BLK/  
BLK

**410 Y**  
MDN/GPH/  
WHT

**600 Y**  
RED/BLK/  
WHT

**400 Y**  
RYL/BLK/  
WHT



**301**  
GRN/BLK/  
WHT

**609**  
MAR/BLK/  
WHT

**500**  
PUR/BLK/  
WHT

**475**  
CBL/BLK/  
WHT

**750**  
SGD/BLK/  
WHT

**800**  
TOG/BLK/  
WHT



**860 Y**  
DKO/BLK/  
WHT

**625**  
CRD/BLK/  
WHT

**305**  
TKG/BLK/  
WHT

**200**  
BRN/BLK/  
WHT

**654**  
TPK/BLK/  
WHT

**722**  
CTL/BLK/  
WHT

**1372534**

## UA W'S RADAR GLOVES

\$30.00 | COMES IN PAIRS | SM-XL

**GIRLS: 3026607** | \$35.00 | 10K, 11K, 12K, 13K, 1-6

FIRST SHIP: 6/20/2022

- Synthetic palm provides durability & grip
- HeatGear® fabric with 4-way stretch for a cool, comfortable feel
- Perforated synthetic overlays add support & durability
- Finger perforations for added breathability
- Elastic cuff provides wrist support & a locked-in feel
- Internal locker tag to mark your name or number

63% POLYESTER, 31% POLYURETHANE, 3% ELASTANE, 3% NYLON

G = GIRLS OFFERING



**NEW**

**1380006**

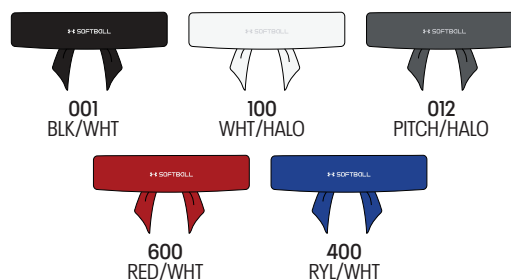
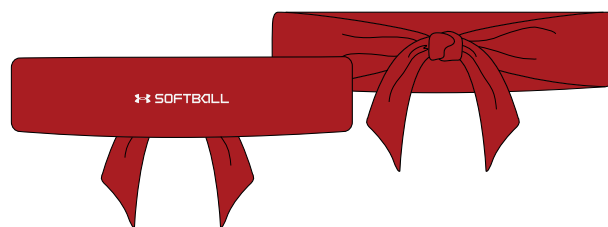
## UA SOFTBALL TIE HB

\$12.00 | WIDTH: 2.5", LENGTH: 29"

FIRST SHIP: 6/20/2023

- Super-light HeatGear® fabric to help keep you cool, dry & light
- Material wicks sweat & dries really fast
- 4-way stretch material moves better in every direction
- Brought together in the back with a knot

77% POLYESTER, 23% ELASTANE



## 1350105 UA YARD BATPACK

\$80.00

FIRST SHIP: C/O

- UA Storm technology delivers an element-battling, highly water-resistant finish
- Foam padded back panel for enhanced comfort & breathability
- Soft tricot-lined front valuables pocket & a hook & loop section for batting glove storage
- Built-in fence hook for on field organization
- Airvent shoe compartment on front is embroidery compatible for customization
- Molded sunglasses pocket for added protection
- Second bag strap clip for multiple ways to carry
- XL capacity holds 4 bats, cleats, batting gloves, valuables, gloves & water bottle

**STORM**



## 1369318 UA UTILITY PRINT BATPACK

\$65.00

FIRST SHIP: C/O

- UA Storm technology delivers an element-battling, highly water-resistant finish
- Foam padded back panel for enhanced comfort & breathability
- Soft tricot-lined front valuables pocket & a hook & loop section for batting glove storage
- Built-in fence hook for on field organization
- Airvent shoe compartment on front is embroidery compatible for customization
- Second bag strap clip for multiple ways to carry
- Large capacity holds 4 bats, cleats, batting gloves, valuables, gloves & water bottle

**STORM**





## 1365313 UA ACE2 T-BALL BATPACK

\$40.00

FIRST SHIP: C/O

- UA Storm technology delivers an element-battling, highly water-resistant finish
- Foam padded back panel for enhanced comfort & breathability
- Soft tricot-lined front valuables pocket & a hook & loop section for batting glove storage
- Built-in fence hook for on field organization
- Airvent shoe compartment on front is embroidery compatible for customization
- Small capacity holds 2 bats, cleats, batting gloves, valuables, gloves & water bottle
- Ideal size for ages 4-7
- Top grab handle

**STORM**



## 1365312 UA BASEBALL WHEELED BAG

\$150.00

FIRST SHIP: C/O

- UA Storm technology delivers an element-battling, highly water-resistant finish
- Multiple options on the go including shoulder straps, grab handles, wheels
- Big enough for even catcher's gear, with separate compartments for your helmet and cleats
- Side panel is completely removable for team or player embellishment
- Separate storage for up to 6 bats

**STORM**



003  
BLK/WHT

## UAHG3A UA CONVERGE CATCHING HELMET

\$250.00 | 7-7 ½"

**YOUTH: UAHG3Y** | \$250.00 | 6 ¼-7"

FIRST SHIP: C/O

- Professional/college level catching helmet
- Large scoop vent for ventilation and heat management
- Patented I-BAR VISION™ steel cage increases player's sight lines by using flattened bars which also increase the strength of the cage
- Cage not mounted to forehead for better force re-direction
- Removable, washable, breathable, antimicrobial liner system



## UAWCP2-AL UA WOMEN'S PRO CHEST PROTECTOR

\$225.00 | 16"

**UAWCP2-A** | \$225.00 | 14 ½"

FIRST SHIP: C/O

- Professional women's specific softball chest protector
- Two optional women specific light weight fully moldable and adjustable shoulder extensions to customize your protection
- Moldable plastic inserts in the throat, sternum, and shoulders to disperse impacts and help the chest protector mold to your body
- Low rebound memory foam to deaden blocked balls
- Breathable mesh backing
- Moisture wicking, lightweight harness with four points of adjustment
- AEGIS Microbe Shield™ removes unwanted bacteria and odors



## UAWLG2-AL UA WOMEN'S PRO LEG GUARDS

\$225.00 | 15 ½"

**UAWLG2-A** | \$225.00 | 14 ½"

FIRST SHIP: C/O

- Women's professional leg guards
- Double knee design for increased protection
- High impact PE plastic components with extra thick plastic in high use locations
- Large vent holes in shin and knees along with perforated foam for breathability
- Gel knee pad absorbs impacts
- Extra wide neoprene straps securely hold leg guards in place
- Removable second toe
- AEGIS Microbe Shield™ removes unwanted bacteria and odors



## UABH2 100 UA CONVERGE SOLID GLOSS BATTING HELMET

\$57.50 | 6½-7½ (OSFA)

**EXTRA LARGE: UABH2 100XL** | \$57.50 | 7½+

**YOUTH: UABH2 110** | \$57.50 | 6¾ & UNDER (OSFA)

FIRST SHIP: C/O

- The UA Converge batting helmet features a completely updated shell with ridges and corrugations for added strength
- The large ventilation ports and HeatGear™ liner keeps players cool and dry
- If a softball or baseball cage is needed, the hardware is premounted on the helmet for easy attachment.
- Foam and fabric treated with antimicrobial to remove unwanted bacteria and odors
- The Adult and Youth feature a standard OSFA liner





# PROTECTIVE

## UABH2 100-M

### UA CONVERGE MATTE BATTING HELMET

\$75.00 | 6½-7½ (OSFA)

**YOUTH: UABH2 110-M | \$75.00 | 6¾ & UNDER (OSFA)**

FIRST SHIP: C/O

- The UA Converge batting helmet features a completely updated shell with ridges and corrugations for added strength
- The large ventilation ports and HeatGear™ liner keeps players cool and dry
- If a softball or baseball cage is needed, the hardware is premounted on the helmet for easy attachment.
- Foam and fabric treated with antimicrobial to remove unwanted bacteria and odors
- The Adult and Youth feature a standard OSFA liner



## UABHFGS3

### SOFTBALL BATTING HELMET CAGE

\$32.50

FIRST SHIP: C/O

- New and improved cage for Fastpitch Softball
- Less steel = lighter weight
- Maximum vision with necessary protective coverage
- For Softball only – not to be used for Baseball



## UA815

### OSFM AIRVENT™ PERFORMANCE VISOR

FIRST SHIP: C/O

NO SET UP OR TAPE CHARGE | 18 PC MINIMUM

- UA AirVent™ Performance Fabric
- Breathable Perforation
- Moisture Absorbing and Quick Drying
- UA Performance Sweatband
- Traditional or X-Peak

UA AIRVENT™

4-6 WEEKS FROM ART APPROVAL

ONE SIZE FITS MOST



## UAB440

### AIRVENT™ PERFORMANCE VISOR

\$23.00

FIRST SHIP: C/O

NO SET UP OR TAPE CHARGE | 12 PC MINIMUM

- Breathable Perforation
- Moisture Absorbing & Quick Drying
- Velcro Closure

UA AIRVENT™

2 WEEKS FROM ART APPROVAL (BLANKS SHIP IN 24-48 HOURS)

ONE SIZE FITS MOST



## UA PLAYMAKER

### FIRST SHIP:C/O

- Fully-adjustable UA ArmourGrip nose pads have a lasered engraving for ultimate comfort & stability
- Injected front & rubber non-slip temples keep the frames lightweight & firmly on your head
- TR90 frames are durable, flexible, hypoallergenic & impact-resistant
- Auto-lock stop hinge allows the temples to lock securely in place for a sturdy fit
- Water & smudge resistant lens coating
- Temple tip holes for easy paring with most lanyards
- All UA Eyewear defends against 100% of harmful UVA/B/C rays
- 3 year warranty against any material or manufacturing defects

POLARIZED	DESCRIPTION	PRICE
2040880IT66M9	MATTE BLACK FRAME WITH GREY POLARIZED LENSES	\$120.00
CORE	DESCRIPTION	PRICE
20408800366KA	MATTE BLACK FRAME WITH GREY CORE LENSES	\$90.00
MIRROR	DESCRIPTION	PRICE
20408880766QI	SHINY BLACK FRAME WITH SILVER MIRROR LENSES	\$90.00
204088RC2667F	MATTE BLACK FRAME WITH ORANGE MIRROR LENSES	\$90.00
TUNED BASEBALL	DESCRIPTION	PRICE
204088PJ66W1	MATTE TRANSPARENT ACADEMY FRAME WITH TUNED SUPERBLUE LENSES	\$100.00
2040886HT66W1	MATTE WHITE FRAME WITH TUNED BLUE LENSES	\$100.00
2040884NL6650	MATTE WHITE FRAME WITH TUNED ORANGE BASEBALL LENSES	\$100.00
TUNED GOLF	DESCRIPTION	PRICE
204088CCP66V8	SHINY WHITE FRAME WITH GREEN-BLUE GOLF TUNED LENSES	\$100.00
PHOTOCHROMIC	DESCRIPTION	PRICE
20408806W66SW	MATTE BLACK FRAME WITH PHOTOCHROMIC GREY LENSES	\$120.00

### POLARIZED



2040880IT66M9

### CORE



20408800366KA

### MIRROR



20408880766QI



204088RC2667F

### TUNED BASEBALL



204088PJ66W1



2040886HT66W1



204088PJ66W1

### TUNED GOLF



204088CCP66V8

### PHOTOCHROMIC



20408806W66SW



## UA BLITZING

### FIRST SHIP:C/O

- Fully-adjustable UA ArmourGrip nose pads have a lasered engraving for ultimate comfort & stability
- Injected front & temples with non-slip rubber trim keeps the frames on your head
- TR90 frames are durable, flexible, hypoallergenic & impact-resistant
- Auto-lock stop hinge allows the temples to lock securely in place for a sturdy fit
- Water- & smudge-resistant coating makes the lenses easier to clean with clearer optics
- Comes with a soft microfiber pouch to keep your eyewear clean & protected
- All UA Eyewear defends against 100% of harmful UVA/B rays
- 3 year warranty against any material or manufacturing defects

POLARIZED	DESCRIPTION	PRICE
20418200371M9	MATTE BLACK FRAME WITH GRAY POLARIZED LENSES	\$110.00
CORE	DESCRIPTION	PRICE
204182R6S7IIR	MATTE JET GRAY FRAME WITH GRAY LENSES	\$80.00
MIRROR	DESCRIPTION	PRICE
2041827ZJ7IZ9	SHINY BLACK FRAME WITH GREEN MIRROR LENSES	\$90.00
204182KB77IW1	TRANSLUCENT PITCH GREY FRAME WITH BLUE MIRROR LENSES	\$90.00
204182CCP7IW1	WHITE FRAME WITH BLUE MIRROR LENSES LOGO BLACK	\$90.00
TUNED GOLF	DESCRIPTION	PRICE
20418208A7IV8	SHINY BLACK FRAME WITH GREEN-BLUE GOLF TUNED LENSES	\$100.00

### POLARIZED



20418200371M9

### CORE



204182R6S7IIR

### MIRROR



2041827ZJ7IZ9

204182KB77IW1



204182CCP7IW1

### TUNED GOLF



20418208A7IV8

## UA SKYLAR

### FIRST SHIP:C/O

- TRITAN RENEW™ injected front & temples use a BPA-free plastic with up to 50% recycled content
- TRITAN RENEW™ is a revolutionary solution that transforms waste into durable, safe plastic
- TRITAN TR18 lenses are BPA-free & impact-resistant
- Mirror coating offers improved sun protection, durability & scratch resistance
- Rubber non-slip nose pads for ultimate comfort
- Adjustable temples auto-form around your head for a gentle grip & custom fit
- Durable, flexible, hypoallergenic & impact-resistant frame with auto-lock stop hinge temples for a secure fit
- Rx-Compatible
- Comes with a soft microfiber pouch to keep your eyewear clean & protected
- All UA Eyewear defends against 100% of harmful UVA/B rays
- 3 year warranty against any material or manufacturing defects

POLARIZED	DESCRIPTION	PRICE
20529428453M9	SHINY BLACK FRAME WITH GRAY POLARIZED LENSES	\$110.00
205294B8Q53LA	TRANSPARENT KHAKI OVER WHITE CLAY WITH BROWN GRADIENT POLARIZED LENSES	\$110.00
CORE	DESCRIPTION	PRICE
20529400353IR	MATTE BLACK FRAME WITH GRAY LENSES	\$80.00
MIRROR	DESCRIPTION	PRICE
20529480753SQ	BLACK FRAME WITH YELLOW GOLD MIRROR LENSES	\$90.00
205294B5953TE	TRANSPARENT OPAL GREEN FRAME WITH LIGHT PURPLE MIRROR LENSES	\$90.00
2052940XZ53XT	TRANSPARENT DEEP SEA FRAME WITH SKY MIRROR LENSES	\$90.00

### POLARIZED



20529428453M9

205294B8Q53LA

### CORE



20529400353IR

### MIRROR



20529480753SQ

205294B5953TE



2052940XZ53XT

## UA GAMEDAY

### FIRST SHIP: C/O

- Fully-adjustable UA ArmourGrip nose pads have a lasered engraving for ultimate comfort & stability
- Injected front & temples with non-slip rubber trim keeps the frames on your head
- TR90 frames are durable, flexible, hypoallergenic & impact-resistant
- Auto-lock stop hinge allows the temples to lock securely in place for a sturdy fit
- Water & smudge-resistant coating makes the lenses easier to clean with clearer optics
- Comes with a soft microfiber pouch to keep your eyewear clean & protected
- All UA Eyewear Protects against 100% of Harmful UV A/B Rays
- 3 Year Warranty against any material or manufacturing defects

CORE	DESCRIPTION	PRICE
20476280799KA	SHINY BLACK FRAME WITH GRAY LENS	\$80.00
MIRROR	DESCRIPTION	PRICE
2047620039950	MATTE BLACK FRAME WITH ORANGE MIRROR LENS	\$80.00
20476263M99QI	MATTE TRANSPARENT CONCRETE FRAME WITH SILVER MIRROR LENS	\$80.00
TUNED BASEBALL	DESCRIPTION	PRICE
204762WWK99W1	MATTE WHITE FRAME WITH TUNED BLUE BASEBALL LENS	\$90.00

### CORE



20476280799KA

### MIRROR



2047620039950



20476263M99QI

### TUNED BASEBALL



204762WWK99W1



## UA HUSTLE

### FIRST SHIP:C/O

- Rubber nose pads for ultimate comfort
- Injected front & temples with non-slip rubber trim keeps the frames on your head
- TR90 frames are durable, flexible, hypoallergenic & impact-resistant
- Auto-lock stop hinge allows the temples to lock securely in place for a sturdy fit
- Adjustable temples auto-form around your head for a gentle grip & custom fit
- All UA Eyewear defends against 100% of harmful UVA/B/C rays
- 3 year warranty against any material or manufacturing defects

POLARIZED	DESCRIPTION	PRICE
20409000357M9	MATTE BLACK FRAME WITH POLARIZED GREY LENSES	\$110.00
20409001T57JY	MATTE BLACK FRAME WITH BLUE MIRROR POLARIZED LENSES	\$120.00
CORE	DESCRIPTION	PRICE
20409080757KU	SHINY BLACK FRAME WITH BLUE LENSES	\$80.00
20409008657QT	MATTE DARK HAVANA FRAME WITH GREEN LENSES	\$80.00
MIRROR	DESCRIPTION	PRICE
204090RC257UZ	MATTE BLACK FRAME WITH ORANGE MIRROR LENSES	\$90.00
204090MNG57Z9	SHINY CRYSTAL FRONT, GREY HAVANA TEMPLE FRAME WITH GREEN MIRROR LENSES	\$90.00
TUNED GOLF	DESCRIPTION	PRICE
20409008A57V8	SHINY BLACK FRAME WITH GREEN-BLUE GOLF TUNED LENSES	\$100.00

### POLARIZED



### CORE



### MIRROR



### TUNED GOLF



## UA FORCE 2

### FIRST SHIP:C/O

- Fully-adjustable UA ArmourGrip nose pads have a laser engraved for ultimate comfort & stability
- Injected front & temples with non-slip rubber trim keeps the frames on your head
- TR90 frames are durable, flexible, hypoallergenic & impact-resistant
- Auto-lock stop hinge allows the temples to lock securely in place for a sturdy fit
- Water & smudge resistant lens coating
- Lens Vents keep air flowing across your lenses, eliminating fog & moisture build-up
- All UA Eyewear defends against 100% of harmful UVA/B/C rays
- 3 year warranty against any material or manufacturing defects

CORE	DESCRIPTION	PRICE
20418100399KA	MATTE BLACK FRAME WITH GREY LENSES	\$110.00
MIRROR	DESCRIPTION	PRICE
204181KB799UE	MATTE HALO GREY FRAME WITH GOLD MIRROR LENSES	\$110.00
TUNED	DESCRIPTION	PRICE
204181RC29950	MATTE BLACK FRAME WITH ORANGE BASEBALL TUNED LENSES	\$120.00
204181WWK99W1	MATTE WHITE FRAME WITH BLUE BASEBALL TUNED LENSES	\$120.00

### CORE



### MIRROR



### TUNED BASEBALL



## UA ASSIST 2

### FIRST SHIP: C/O

- TRITAN RENEW™ injected front & temples use a BPA-free plastic with up to 50% recycled content
- TRITAN TR18 lenses are BPA-free & impact-resistant
- Rubber non-slip nose pads for ultimate comfort
- Silicone sleeve temple tips help keep the frames in place & provide extra comfort
- Durable, flexible, hypoallergenic & impact-resistant frame
- Auto-lock stop hinge allows the temples to lock securely in place for a sturdy fit
- Comes with a soft microfiber pouch to keep your eyewear clean & protected
- All UA Eyewear defends against 100% of harmful UVA/B rays
- 3 year warranty against any material or manufacturing defects

POLARIZED	DESCRIPTION	PRICE
20529308A57M9	MATTE BLACK FRAME WITH GRAY POLARIZED LENSES	\$110.00
20529309V57IY	TRANSPARENT MOD GREY FRAME WITH DARK BLUE MIRROR POLARIZED LENSES	\$110.00
CORE	DESCRIPTION	PRICE
20529300357IR	MATTE BLACK FRAME WITH GREY LENSES	\$80.00
MIRROR	DESCRIPTION	PRICE
20529380757Z9	BLACK FRAME WITH EMERALD MIRROR LENSES	\$90.00
2052930VK57Z0	MATTE BLACK FRAME WITH BLUE CHROME MIRROR LENSES	\$90.00
20529390057DC	CRYSTAL CLEAR FRAME WITH SILVER CHROME MIRROR LENSES	\$90.00

### POLARIZED



20529308A57M9

20529309V57IY

### CORE



20529300357IR

### MIRROR



20529380757Z9

2052930VK57Z0



20529390057DC





Women's Armourfuse® Training gear is offered in customizable designs for tees, shorts, and baselayer. Available in compression and loose fits. Ideal for training days, travel, shooting shirts, tournaments, and game uniforms across all sports.

# ARMOURFUSE

- Brilliant, vibrant team colors permanently fused directly into textiles
- Limitless customization, all-inclusive pricing with exclusive UA designs and customized prints
- 37 different colors and 16 prints available
- 6 piece minimum order



# AF TRAINING HOODY

XS-2XL, OVERSIZE 3XL, YSM-YXL

HOODY	SIZE	PRICE
UIGSLHW (W)	XS-2XL	\$122.00
UIGSLHY (Y)	YSM-YXL	\$111.50

OVERSIZED SURCHARGE +\$5 PER SIZE  
ADDITIONAL LENGTH OPTIONS FOUND ON PAGE 61



SPRINT



UA VITAL



UA ECLIPSE



SCOUT



# AF TRAINING ½ ZIP

XS-2XL, OVERSIZE 3XL

½ ZIP	SIZE	PRICE
UJGHZPW (W)	XS-2XL	\$96.00

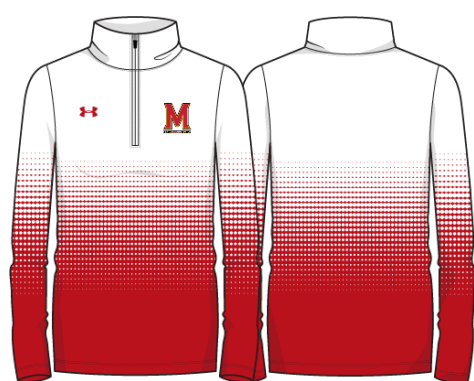
OVERSIZED SURCHARGE +\$5 PER SIZE  
ADDITIONAL LENGTH OPTIONS FOUND ON PAGE 61



SPRINT



UA VITAL



UA ECLIPSE



SCOUT



SPRINT



SPRINT

## AF TRAINING SS

XS-2XL, OVERSIZE 3XL, YSM-YXL

LOOSE SS T	SIZE	PRICE
UJGSIW (W)	XS-2XL	\$60.00
UJGSIY (Y)	YSM-YXL	\$55.00

OVERSIZED SURCHARGE +\$5 PER SIZE  
ADDITIONAL LENGTH OPTIONS FOUND ON PAGE 61



UA VITAL



UA VITAL

## AF SHORTSLEEVE HOODED SHOOTER

SM-2XL, OVERSIZE 3XL, YSM-YXL

STYLE	SIZE	PRICE
UJKTHW (W)	SM-2XL	\$91.00
UJGTHSY (Y)	YSM-YXL	\$82.50

OVERSIZED SURCHARGE +\$5 PER SIZE  
ADDITIONAL LENGTH OPTIONS FOUND ON PAGE 61



UA ECLIPSE



UA ECLIPSE



SCOUT



SCOUT



# AF TRAINING LS

XS-2XL, OVERSIZE 3XL, YSM-YXL

LOOSE LST	SIZE	PRICE
UJGJL1W (W)	XS-2XL	\$65.00
UJGJL1Y (Y)	YSM-YXL	\$60.00

OVERSIZED SURCHARGE +\$5 PER SIZE  
ADDITIONAL LENGTH OPTIONS FOUND ON PAGE 61



SPRINT



UA VITAL



UA ECLIPSE



SCOUT

## AF TRAINING SHORTS

XS-2XL, OVERSIZE 3XL, YSM-YXL

POCKETED SHORT	SIZE	PRICE
UJGS2PW (W)	XS-2XL	\$65.00
UJGS2PY (Y)	YSM-YXL	\$60.00

NON-POCKETED SHORT	SIZE	PRICE
UJGS2W (W)	XS-2XL	\$60.00
UJGS2Y (Y)	YSM-YXL	\$55.00

HEADBAND	SIZE	PRICE
UJLHBW1 (W)	OSFA	\$34.00

5" INSEAM FOR POCKETED AND NON-POCKETED SHORT  
OVERSIZED SURCHARGE +\$5 PER SIZE  
ADDITIONAL LENGTH OPTIONS FOUND ON PAGE 61



**SPRINT**



**UA VITAL**



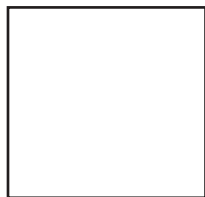
**UA ECLIPSE**



**SCOUT**



# ARMOUR FUSE



WHITE



BLACK



MIDNIGHT NAVY



UNIVERSITY RED



ROYAL



FOREST GREEN



TEAM KELLY GREEN



MAROON



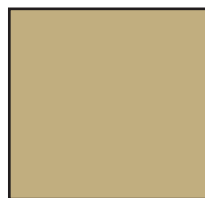
CARDINAL



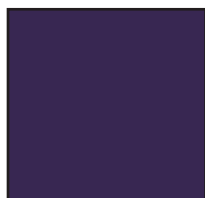
DARK ORANGE



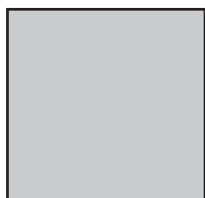
STEELTOWN GOLD



TEAM VEGAS GOLD



PURPLE



SILVER GRAY



GRAPHITE



CAROLINA BLUE



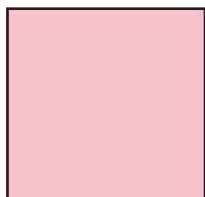
CLEVELAND BROWN



TEXAS ORANGE



COASTAL TEAL



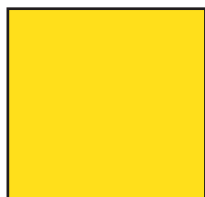
PINK



POISON



CAPRI



TAXI



BASEBALL GRAY



OCEAN STORM



TENNESSEE ORANGE



GRAYSTONE



MIAMI TEAL



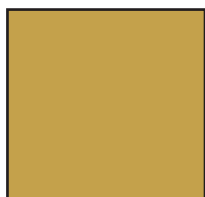
SEA GLASS



POWDER KEG BLUE



ELECTRIC BLUE



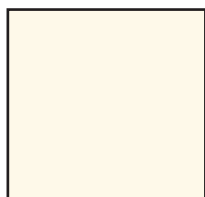
GOLD RUSH



TROPIC PINK

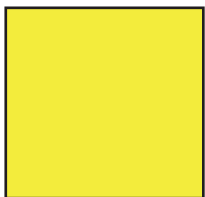


PITCH GRAY



VINTAGE WHITE

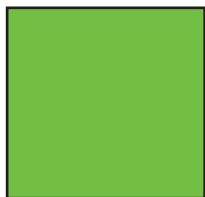
**FLUORESCENTS**  
NOT CURRENTLY AVAILABLE IN TONAL  
PRINTS OR ON GAMEDAY SELECT PRODUCT



YELLOW FLUORESCENT



PINK FLUORESCENT



GREEN FLUORESCENT



ORANGE FLUORESCENT



## HEATHER COLOR OFFERING

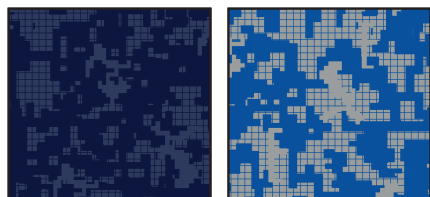
Offered exclusively on "Vital" and "Scout" Designs on ArmourFuse Training product (see pages 50-55)

Swatches available through your ArmourFuse business Customer Service Rep

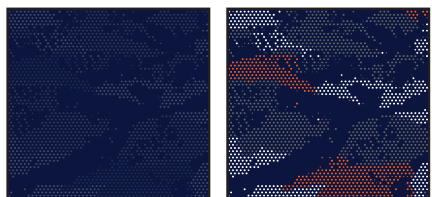


# ARMOUR FUSE

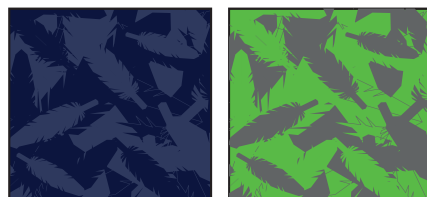
Prints available in all ArmourFuse colors. (Fluorescents not currently available in tonal prints)



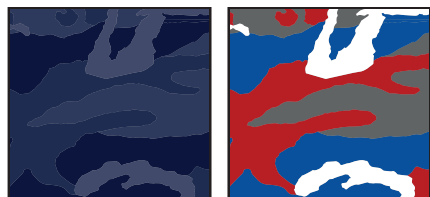
DIGITAL CAMO



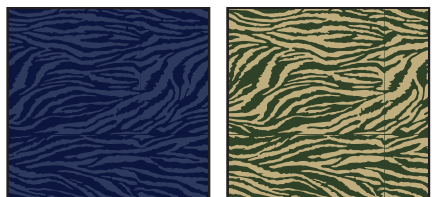
PIXEL CAMO



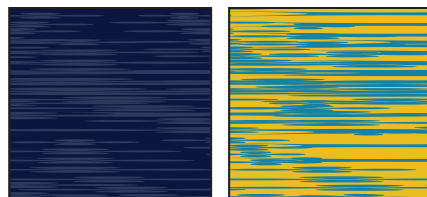
WINGS



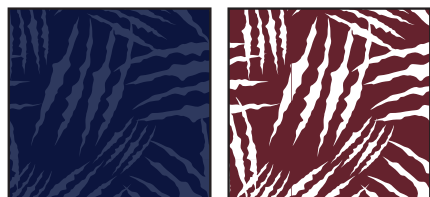
WOODLAND CAMO



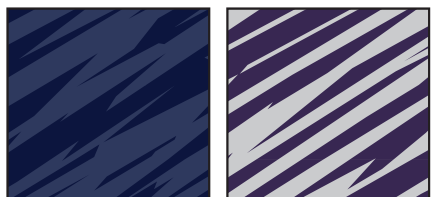
BENGAL



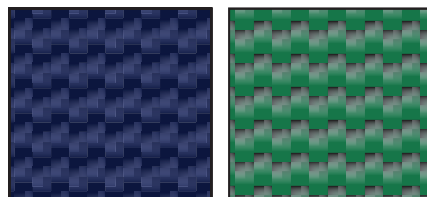
BLUR



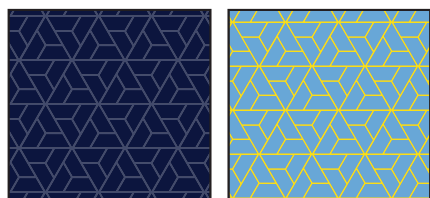
CLAW



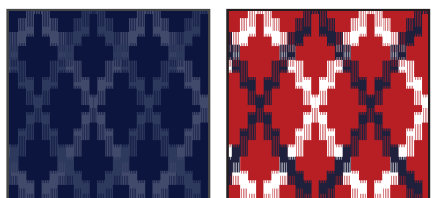
SPLINTER



CARBON WEAVE



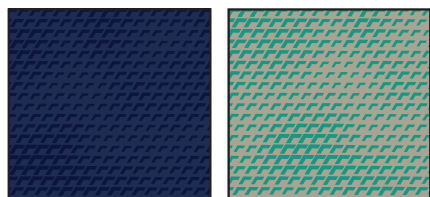
RAZOR



TOTEM

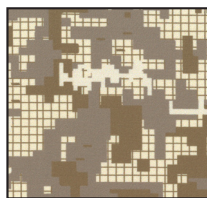


TREAD

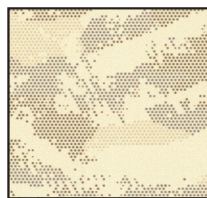


SCALE

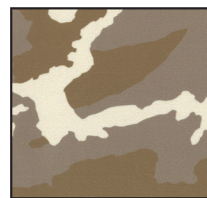
DESERT CAMO  
LOCKED COLOR COMBINATIONS,  
CANNOT BE ALTERED



DESERT  
DIGITAL CAMO



DESERT  
PIXEL CAMO



DESERT  
WOODLAND CAMO

## FONT OPTIONS

### BADGER

ABCDEFGHIJKLMNOPQRSTUVWXYZ  
0123456789

### COMBINE

ABCDEFGHIJKLMNOPQRSTUVWXYZ  
0123456789

### BEARCAT

ABCDEFGHIJKLMNOPQRSTUVWXYZ  
0123456789

### CADET

ABCDEFGHIJKLMNOPQRSTUVWXYZ  
0123456789

### HIGHLIGHT

ABCDEFGHIJKLMNOPQRSTUVWXYZ  
0123456789

### TERRAFONT

ABCDEFGHIJKLMNOPQRSTUVWXYZ  
0123456789

### PREMIER

ABCDEFGHIJKLMNOPQRSTUVWXYZ  
0123456789

### TIFFANY

ABCDEFGHIJKLMNOPQRSTUVWXYZ  
0123456789

### FULL BLOCK

ABCDEFGHIJKLMNOPQRSTUVWXYZ  
0123456789

### UNDENIABLE

ABCDEFGHIJKLMNOPQRSTUVWXYZ  
0123456789

### FALCON

ABCDEFGHIJKLMNOPQRSTUVWXYZ  
0123456789

### PLAIN BLOCK

ABCDEFGHIJKLMNOPQRSTUVWXYZ

### ATHLETIC SCRIPT

ABCDEFGHIJKLMNOPQRSTUVWXYZ  
abcdefghijklmnopqrstuvwxyz

### CLASSIC SCRIPT

ABCDEFGHIJKLMNOPQRSTUVWXYZ  
abcdefghijklmnopqrstuvwxyz

### NOTE:

- Gameday Select Package Pricing now includes all of the above listed fonts
- Dropped fonts available for fill-in orders only

## STOCK DECORATION OPTIONS

SCREEN PRINT	ONE COLOR	TWO COLORS
Team Name	\$5.50	\$10.50
Team Mascot/Logo	\$5.50	\$10.50
Front + Back Numbers	\$12.00	\$17.00

TWILL	ONE COLOR	TWO COLORS
Team Name	\$22.00	\$27.00
Front + Back Numbers	\$27.00	\$32.00
Player Names	\$22.00	
ArmourFuse Twill Patch (Max 3"x3")	\$11.00	\$11.00

EMBROIDERY	ONE COLOR	TWO COLORS
Team Name (up to 2")	\$10.00	\$10.00

see page 61 for Embroidered Mascot/Logo pricing

### ADDITIONAL STOCK OPTIONS & NOTES

- Player Numbers Per Location = 1/2 of above
- "Front + Back Numbers" pricing
- Player Name Directly On Jersey Only (No Nameplates)
- ArmourFuse Twill = Twill Pricing +\$10
- Add Tail to Script Font Twill Team Name +\$10
- Add Embroidery to Twill Tail +\$10
- Non-Stock designs and lettering may require additional charge at Under Armour's discretion (call for quote)

## LETTERING ARRANGEMENTS

STRAIGHT

ARCHED

BRIDGED

VERTICAL ARCH

*Athletic Script*

*Classic Script*



## GAMEDAY SELECT OPTIONS

3/16" 1-COLOR PIPE				
				
WHITE	BASEBALL GRAY	BLACK	MIDNIGHT NAVY	UNIVERSITY RED
				
ROYAL	FOREST GREEN	MAROON	PURPLE	DARK ORANGE
				
STEELTOWN GOLD	TEAM KELLY GREEN	CARDINAL	TEAM VEGAS GOLD	CAROLINA BLUE
				
CLEVELAND BROWN	TEAL	TEXAS ORANGE	SILVER GRAY	GRAPHITE

1/2" 3-COLOR BRAID		
1	2	3

ANY COMBO  
OF PIPE COLORS

### INCLUDED PIPE/BRAID

#### 1. Jersey Front

Around Neck  
**OR**  
Around Placket  
**OR**  
None

#### 2. Jersey Sleeves

Sleeve Ends  
**OR**  
None

#### 3. Pants

Down Side  
**OR**  
None

### OPTIONAL PANT ALTERATIONS

	LIST PRICE
Reduce Knicker Inseam 2" and Hem w/ Elastic	\$0.00
Increase Knicker Inseam 2" and Hem w/ Elastic	\$0.00
Increase Knicker Inseam 4" and Hem w/ Elastic*	\$15.00
Reduce Relaxed/Tapered Inseam 2" and Hem	\$0.00
Increase Relaxed/Tapered Inseam 2" and Hem	\$0.00
Increase Relaxed/Tapered Inseam 4" and Hem*	\$15.00

### OPTIONAL ARMOURFUSE™ TWILL (L X H)

	LIST PRICE
Custom Font Team Name (Max. 14" x 4.25")	\$10.00
Custom Left Chest Team Logo (Max. 4" x 5")	\$15.00
Custom Sleeve Patch (Max. 4" x 4")	\$15.00
Custom Back Neck Patch (Max. 3" x 2")	\$15.00
Player Name (On Nameplate)	\$40.00
Player Name Directly on Jersey (No Nameplate)	\$30.00
Blank Nameplate	\$7.00
Add Tail to Script Font Team Name	\$20.00
Add Text to Script Font Tail	\$20.00

**Note:** Vector art must be provided for custom Armourfuse™ Twill or additional artwork charges will apply

\*Available on Men's styles only






















## STOCK OPTIONS

3/16" 1-COLOR PIPE	LIST PRICE
Around Placket (UBJ316P)	\$17.00
Sleeve Ends (UBJ316S)	\$17.00
Down Side (UBP316D)	\$17.00

1/2" 3-COLOR BRAID	LIST PRICE
Around Placket (UBJ12AP)	\$17.00
Around Neck (UBJ12NB)	\$17.00
Sleeve Ends (UBJ12SE)	\$17.00
Down Sides (UBP12DS)	\$17.00

**NOTE:** Additional leadtime should be expected for orders including piping, braiding and/or hemming. Please contact a UA Sale Rep for updates.

### PIPE & BRAID AVAILABLE COLORS

Pipe 3/16"						
	WHITE	BLACK	MIDNIGHT NAVY	UNIVERSITY RED	ROYAL	FOREST GREEN
Braid 1/2"						
	MAROON	PURPLE	DARK ORANGE	CARDINAL	TEAM VEGAS GOLD	
						
	BK/WH/BK	NA/WH/NA	SC/WH/SC	RO/WH/RO		
						
	DG/WH/DG	MA/WH/MA	PU/WH/PY	OR/WH/OR		
						
	CA/WH/CA	VG/WH/VG				

## ADDITIONAL LENGTH OPTIONS (ARMOURFUSE ONLY - \$10 FOR ALL -/+ OPTIONS)

### BASEBALL/SOFTBALL

TYPE	ADJUSTMENT	CODE
JERSEYS	Add 2" body length	UIX2BDY
	Add 4" body length	UIX4BDY
PANTS	Subtract 2" from inseam	UIJSHN2
	Add 2" to inseam length	UIX2INS
	Add 4" to inseam length	UIX4INS

### FOOTBALL

TYPE	ADJUSTMENT	CODE
JERSEYS	Shorten to waist length	
PANTS	Add 2" to inseam length	UIX2INS

### LACROSSE/ FIELD HOCKEY

TYPE	ADJUSTMENT	CODE
JERSEYS	Add 2" body length	UIX2BDY
SHORTS	Subtract 1" from inseam	UIJSHN1
	Subtract 2" from inseam	UIJSHN2
	Add 1" to inseam length	UIX1INS
	Add 2" to inseam length	UIX2INS
KILTS	Add 1" to inseam length	UIX1INS
	Add 2" to inseam length	UIX2INS

### BASKETBALL

TYPE	ADJUSTMENT	CODE
JERSEYS	Add 2" body length	UIX2BDY
	Add 4" body length	UIX4BDY
	Add 6" body length	UIX6BDY
SHORTS	Subtract 1" from inseam	UIJSHN1
	Add 1" to inseam length	UIX1INS
	Add 2" to inseam length	UIX2INS
	Add 3" to inseam length	UIX3INS
SHOOTING SHIRTS	Add 2" body, 1" sleeve	UIX2B1S
	Add 4" body, 2" sleeve	UIX4B2S
	Add 6" body, 3" sleeve	UIX6B3S

### SOCCER

TYPE	ADJUSTMENT	CODE
JERSEYS	Add 2" body length	UIX2BDY
SHORTS	Subtract 1" from inseam	UIJSHN1
	Subtract 2" from inseam	UIJSHN2
	Add 1" to inseam length	UIX1INS
	Add 2" to inseam length	UIX2INS

### TRACK & FIELD

TYPE	ADJUSTMENT	CODE
JERSEYS	Add 2" body length	UIX2BDY
LOOSE SHORTS*	Subtract 1" from inseam	UIJSHN1
	Add 1" to inseam length	UIX1INS

\*UITS2M & UITS2W ONLY

### TRAINING

TYPE	ADJUSTMENT	CODE
JERSEYS	Add 2" body length	UIX2BDY
	Add 4" body length	UIX4BDY
	Add 6" body length	UIX6BDY
SHORTS	Subtract 1" from inseam	UIJSHN1
	Subtract 2" from inseam	UIJSHN2
	Add 1" to inseam length	UIX1INS
	Add 2" to inseam length	UIX2INS
	Add 3" to inseam length	UIX3INS

### VOLLEYBALL

TYPE	ADJUSTMENT	CODE
JERSEYS	Add 2" body length	UIX2BDY
SHORTS	Subtract 1" from inseam	UIJSHN1
	Subtract 2" from inseam	UIJSHN2

## EMBROIDERY

#### MASCOTS (STOCK ONLY) LIST PRICE

Mascot	\$11.00
Mascot with One Line	\$12.00
Mascot with Two Lines	\$13.00
American Flag	\$11.00
Small/Homeplate	\$6.00

#### DIGITIZING (STOCK AND ARMOURFUSE ONLY) LIST PRICE

Stock Designs and Lettering	\$180.00
Custom Logos	Call for Quote

• Prices are based upon size of designs, not the number of colors. Prices are subject to change if design exceeds specifications.

• Dimensions are maximum space - unless specifically noted best judgement will be used.

• Letter styles are available horizontal or arched.

• No digitizing charge for team names.

• Flag size up to 2" by 3" (bigger area - call for quote)

• Minimum order charges apply for embroidery

• All designs require an additional digitizing charge, except:

- 1) Digitized designs supplied on a disk
- 2) Digitized design is a re-order of an existing design

## STANDARD SLEEVE PRINT STRIPES

\*OPTIONS - Code numbers listed below stripe patterns

\*Stripes may be adjusted to fit smaller garments and not measure exactly as shown.

	1/2" STRIPE 1/2" SPACE 2" STRIPE 1/2" SPACE 1/2" STRIPE		1/2" STRIPE 1/2" SPACE 2" STRIPE 1/2" SPACE 1/2" STRIPE		3/4" STRIPE 1/2" SPACE 3/4" STRIPE 1/2" SPACE 3/4" STRIPE		3/4" STRIPE 1/2" SPACE 3/4" STRIPE 1/2" SPACE 3/4" STRIPE		3/4" STRIPE 1/4" SPACE 3/4" STRIPE 1/4" SPACE 3/4" STRIPE 1/4" SPACE 3/4" STRIPE 1/4" SPACE 3/4" STRIPE
	2" STRIPE 2" STRIPE		1/4" STRIPE 1" STRIPE 1" SPACE 1/4" STRIPE 1" STRIPE 1/4" STRIPE 1" SPACE		1" STRIPE 1" STRIPE 1" SPACE 1" STRIPE 1" STRIPE		1 1/2" STRIPE 1 1/2" STRIPE 1 1/2" STRIPE		

## ARMOURFUSE® GRAPHIC OPTIONS



## TEAM TRAINING



STYLE NAME	GENDER	STYLE#	UA ECLIPSE	UA VITAL	SCOUT
HOODY	MEN'S	UJGSLHM	X	X	X
	WOMEN'S	UJGSLHW	X	X	X
	YOUTH	UJGSLHY	X	X	X
1/4 ZIP	MEN'S	UJGQZPM	X	X	X
	WOMEN'S	UJGHZPW	X	X	X
LOOSE SHORTSLEEVE	MEN'S	UJGSIM	X	X	X
	WOMEN'S	UJGSIW	X	X	X
	YOUTH	UJGSIY	X	X	X
LOOSE LONGSLEEVE	MEN'S	UJGJIM	X	X	X
	WOMEN'S	UJGJIW	X	X	X
	YOUTH	UJGJIY	X	X	X
COMPRESSION SLEEVELESS	MEN'S	UJGCBL	X	X	X
COMPRESSION SHORTSLEEVE	MEN'S	UJGTBL	X	X	X
COMPRESSION 1/2 SLEEVE	MEN'S	UJGHLB	X	X	X
COMPRESSION LONGSLEEVE	MEN'S	UJGCLS	X	X	X
POCKETED SHORT	MEN'S	UJGS2PM	X	X	X
	WOMEN'S	UJGS2PW	X	X	X
	YOUTH	UJGS2PY	X	X	X
NON-POCKETED SHORT	MEN'S	UJGS2M	X	X	X
	WOMEN'S	UJGS2W	X	X	X
	YOUTH	UJGS2Y	X	X	X





## ORDERING INFORMATION

### Guarantee:

The materials and workmanship of our garments are guaranteed when given fair treatment and used under normal conditions.

### Color Matching:

Scientifically, it is not possible to achieve a perfect color match from one dye lot to another. Therefore, we cannot guarantee a perfect match from order to order or from one fabric to another.

### Color Abbreviation Key:

The following abbreviations may be used when ordering merchandise.

<b>BG</b> Baseball Gray	<b>EB</b> Electric Blue	<b>PI</b> Pink	<b>SI</b> Silver Grey
<b>BK</b> Black	<b>GP</b> Graphite	<b>PK</b> Powderkeg Blue	<b>TI</b> Taxi
<b>BR</b> Brown	<b>KE</b> Team Kelly Green	<b>PO</b> Poison	<b>TE</b> Teal
<b>CA</b> Cardinal	<b>LG</b> Steeltown Gold	<b>PU</b> Purple	<b>TO</b> Texas Orange
<b>CB</b> Carolina Blue	<b>MA</b> Maroon	<b>RO</b> Royal	<b>TP</b> Tropic Pink
<b>CP</b> Capri	<b>NA</b> Midnight Navy	<b>RU</b> Gold Rush	<b>VG</b> Team Vegas Gold
<b>DG</b> Forest Green	<b>OR</b> Dark Orange	<b>SC</b> University Red	<b>WH</b> White

### Price Policy:

All catalog prices are list or suggested retail. Prices are subject to change without notice. Merchandise will be invoiced based on the prices in effect at the time the order is placed.

### Terms:

Prices are FOB shipping point. Payment is due Net 30.

### Minimum Order Charges:

A handling charge of \$10.00 will be added to orders of less than \$150.00 list. Custom and GamedaySelect fill-in minimum order is 6 units per style and color. A 100% surcharge will be applied to orders of 1-2 units, and a 50% surcharge for orders of 3-5 units.

### Lettered Orders for COD Shipment:

A 50% deposit is required on all lettered orders calling for COD shipment.

### Delivery:

Shipments will always be made by the fastest, least expensive means possible. The customer will assume any additional expense required to expedite delivery.

### Order Cancellations:

Cancellations must be received at least one day prior to the ship date. Special order garments cannot be cancelled after they have been cut. Lettered garments cannot be cancelled after they have been printed or sewn.

### Returns:

Claims must be reported to our office within 10 working days of merchandise receipt. Returns cannot be made after 30 days of the invoice date. All returns for plain merchandise must be clearly marked with an authorization number or label obtained from our office. All returns for lettered merchandise must be clearly marked "LETTERING." When requesting an authorization label, the following information is required: Reason for return, Invoice #, Style #, Color, Size/Quantity. An authorization label will then be sent to you to prepare the merchandise for return shipment. We reserve the right to repair, replace or issue credit for any merchandise returned. A 15% restocking fee and shipping charges will be charged for merchandise returned that is either not damaged or the damage is determined not to be our fault. All worn garments must be properly laundered prior to return or they will not be accepted.

All custom and custom-stock uniforms may not be returned under any circumstances if delivered properly.

### Shortages:

All claims must be made within 10 days of the invoice date.

### New Accounts:

All new accounts must be opened through your local sales representative. New accounts that do not have a Dunn and Bradstreet rating will be shipped COD until a credit line has been established.

### Samples:

Samples will be entered and billed as a regular order. Samples cannot be returned without prior approval from our office.

### Imprint Orders:

All imprint orders must be emailed, mailed or faxed in with detailed instructions on UA order forms. Imprint orders will not be taken by phone. Once garments have been lettered, the order cannot be cancelled or returned.

Under Armour will not be responsible for any items not checked for order accuracy or sizing before being sent to a printer / screener. We will not be responsible for shrinkage, defects, or damages caused during the imprinting of our garments by sources other than our own lettering department. Screenprinting sublimated uniforms can cause color migration. We do not recommend screenprinting on sublimated garments.

Photography is the property of Under Armour and is not to be used without written authorization.

## UNIFORM CARE INSTRUCTIONS

To enhance the appearance and extend the life of your uniforms, Under Armour recommends that you follow these cleaning and storing procedures:

### DO NOT DRY CLEAN

### DO NOT WASH IN HOT WATER

### DO NOT USE CHLORINE BLEACH

### DO NOT USE FABRIC SOFTENER

### DO NOT WASH WHITES AND COLORS TOGETHER

### DO NOT OVERLOAD THE WASHING MACHINE

### DO NOT MACHINE DRY ON HIGH HEAT

### DO NOT LEAVE WET OR DAMP GARMENTS IN YOUR TRAVEL BAG, IN A PILE WITH OTHER CLOTHING OR IN WASHING MACHINE

- Pre wash uniform prior to use.
- Uniforms should always be laundered immediately after wearing. However, if this is not possible, rinse garments and hang individually on rust-proof hangers. (Moisture may cause color migration of acid dyes so we advise separating wet or damp uniforms.)
- Belts and any other contrasting color items should be washed separately from the garment.
- It is always advisable to test wash a single uniform according to directions before washing an entire load.
- Wash and rinse all garments in warm water (approx. 110°) with mild detergent. Remove promptly after wash cycle.
- For optimum results, hang garments (especially those with elastane) to dry. If you cannot hang dry, machine dry on the lowest setting. Turn jerseys inside out before machine drying. Remove items from dryer immediately upon completion of the cycle. (Excessive heat can cause fabric shrinkage, discoloration, and cracking and peeling of vinyl plastisol lettering inks.)
- Make sure uniforms are completely dry before storing. Store in a dry area to prevent mildew. Protect them from sunlight and fluorescent light to prevent yellowing.

**PLEASE NOTE:** Under Armour will not be responsible for uniforms that are damaged due to improper care and maintenance. Failure to follow our specified care instructions will void all guarantees.

## UNIFORM FILL-IN LIFECYCLE

LAST SHOWN IN CATALOG	LAST FILL-IN SEASON	LAST FILL-IN SHIP
FA'20	FA'23	12/15/2023
WI'20	WI'23	3/15/2024
SP'21	SP'24	6/15/2024
FA'21	FA'24	12/15/2024
WI'21	WI'24	3/15/2025
SP'22	SP'25	6/15/2025
FA'22	FA'25	12/15/2025
WI'22	WI'25	3/15/2026
SP'23	SP'26	6/15/2026
FA'23	FA'26	12/15/2026
WI'23	WI'26	3/15/2027
SP'24	SP'27	6/15/2027

## COMPRESSION

## FITTED

## LOOSE

# MEN'S



Ultra-tight, second skin fit that keeps you locked in & makes you feel like you can do anything.



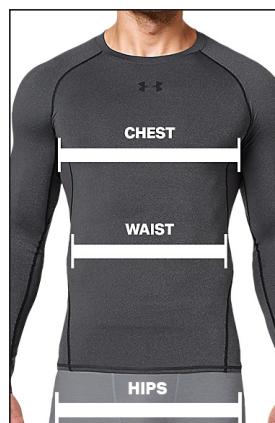
A slimmer, athletic cut that allows total mobility but eliminates the bulk of extra fabric.



Fuller cut for complete comfort, total range of motion & greater breathability.

	US SIZE	CHEST (IN)	WAIST (IN)	HIP (IN)
SM	26-28	34-37	29-31	34-36
MD	30-32	37-41	31-34	36-39
LG	34-36	41-44	34-37	39-42
XL	38-40	44-48	37-41	42-46
2XL	42-44	48-52	41-45.5	46-50
3XL	46-48	52-56	45.5-50	50-54
4XL	50-52	56-60	50-54.5	54-58
5XL	54-56	60-64	54.5-59	58-62

## HOW TO MEASURE



**CHEST:** Place the tape measure under your arms at the fullest part of your chest, wrap around your body until your fingers meet and mark the measurement

**WAIST:** Measure around your natural waistline – right above your hips. Be careful not to squeeze too tight to allow a little give.

**HIPS:** With your feet together, measure around the fullest part of your hips to ensure you'll have enough room to move comfortably.

# BOYS

## FITTED

## LOOSE



A slimmer, athletic cut that allows total mobility but eliminates the bulk of extra fabric.



Fuller cut for complete comfort, total range of motion & greater breathability.

	US SIZE	CHEST (IN)	WAIST (IN)	HIP (IN)
YXS	7	25-26	23-24	26-27
YSM	8	26-27	24-25	27-28
YMD	10-12	27-29	25-27	28-31
YLG	14-16	29-32.5	27-30	31-34
YXL	18-20	32.5-35.5	30-33	34-37

## HOW TO MEASURE



**CHEST:** Place the tape measure under your arms at the fullest part of your chest, wrap around your body until your fingers meet and mark the measurement

**WAIST:** Measure around your natural waistline – right above your hips. Be careful not to squeeze too tight to allow a little give.

**HIPS:** With your feet together, measure around the fullest part of your hips to ensure you'll have enough room to move comfortably.



# WOMEN'S

## COMPRESSION



Ultra-tight, second skin fit that keeps you locked in & makes you feel like you can do anything.

## FITTED



Sits close to the skin for a streamlined fit without the squeeze of compression.

## LOOSE



Fuller, more generous cut for enhanced range of motion & an effortlessly relaxed fit.

	US SIZE	CHEST (IN)	WAIST (IN)	HIP (IN)
XS	0-2	32.5-33.5	25.5-27	34.5-36
S	4-6	33.5-36	27-29	36-38
M	8-10	36-38	29-31	38-40
L	12-14	38-41	31-34	40-43
XL	16	41-44	34-37	43-46
2XL	18	44-47	37-40	46-49
3XL	20	47-50	40-43	49-52
4XL	22	50-53	43-46	52-55

## HOW TO MEASURE



**CHEST:** Place the tape measure under your arms at the fullest part of your chest, wrap around your body until your fingers meet and mark the measurement

**WAIST:** Measure around your natural waistline – right above your hips. Be careful not to squeeze too tight to allow a little give.

**HIPS:** With your feet together, measure around the fullest part of your hips to ensure you'll have enough room to move comfortably.

# GIRLS

## FITTED



Sits close to the skin for a streamlined fit without the squeeze of compression.

## LOOSE



Fuller, more generous cut for enhanced range of motion & an effortlessly relaxed fit.

	US SIZE	CHEST (IN)	WAIST (IN)	HIP (IN)
YXS	7	25-26.5	23-24	26-28
YSM	8	26.5-27.5	24-24.5	28-29
YMD	10-12	27.5-30.5	24.5-26.5	29-32.5
YLG	14-16	30.5-34	26.5-30.5	32.5-36.5
YXL	18-20	34-36	30.5-32.5	36.5-38.5

## HOW TO MEASURE



**CHEST:** Place the tape measure under your arms at the fullest part of your chest, wrap around your body until your fingers meet and mark the measurement

**WAIST:** Measure around your natural waistline – right above your hips. Be careful not to squeeze too tight to allow a little give.

**HIPS:** With your feet together, measure around the fullest part of your hips to ensure you'll have enough room to move comfortably.



## WEST

PAT BAUER  
SR. REGIONAL MANAGER  
410.299.3798  
pbauer@underarmour.com  
WA // OR // MT //  
ID // AK // WY

JEFF UTTZ  
626.484.3496  
jeffu@underarmour.com  
CA // NV // HI // AZ // UT

DAN LAABES  
602.882.7241  
dlaabes@underarmour.com  
AZ // NM // West & South TX

HALEY GILLMORE  
303.562.6053  
hgillmore@underarmour.com  
East TX // OK // CO

FRANK WEBER  
618.540.3955  
fweber@underarmour.com  
IL // MO // IA // MN //  
NE // KS // ND // SD //

## EAST

FRANK NUNAN  
SR. REGIONAL MANAGER  
484.576.9777  
fnunan@underarmour.com  
DE // NJ // Philadelphia area

MONTE GIBBS  
662.801.3039  
mgibbs@underarmour.com  
TN // LA // AL //  
MS // AR // KY

DAN WILLIAMS  
352.672.1676  
dwilliams@underarmour.com  
NC // SC // GA // FL

TONY DONOFRIO  
419.356.9742  
tonyd@underarmour.com  
WI // MI // IN // OH // WV

GARY POWERS  
410.746.3790  
gpowers@underarmour.com  
MD // DC // VA // Eastern PA

BOB BARTLETT  
315.380.6505  
bobb@underarmour.com  
NY // Western PA

JAY KELLEHER  
443.615.0462  
jkelleher@underarmour.com  
New England

## COLLEGIATE

TOMMY AMICO  
951.808.0367  
tamico@underarmour.com  
WEST

TODD LOCKLEAR  
410.454.6572  
tlocklear@underarmour.com  
EAST

CHRIS PORTS  
443.220.1009  
cports@underarmour.com  
MID ATLANTIC

BELLA GARONE  
631.307.0009  
isabella.garone@underarmour.com  
NORTHEAST

ALEX BRUEGGEMANN  
410.652.4337  
abrueggemann@underarmour.com  
SOUTH

## LICENSEES

FOUNDER SPORT GROUP  
Stock & Armourfuse Uniforms  
www.underarmourteamuniforms.com  
888.871.0990  
UASatus@foundersportgroup.com

POWERS ATHLETIC  
Custom Uniforms  
www.uacustomuniforms.com  
800.474.6118  
customerservice@powersathletic.com

THE GAME  
Custom Headwear  
www.uateamheadwear.com  
800.723.5656  
customerservice@2thegame.com

ALL-STAR  
Protective & Fielding Gloves  
800.777.3810  
uateam@all-starsports.com

SAFILO  
Eyewear  
uateamsportsorders@safilo.com



TEL: 1.888.828.1547 / B2B: ARMOURHOUSE.UNDERARMOUR.COM

### COLLEGIATE

TEAMSPTS COLLEGIATE / TEAMSPTS.COLLEGIATE@UNDERARMOUR.COM

### EAST

TEAM SPORTS SE / TEAMSPTSSE@UNDERARMOUR.COM  
TEAM SPORTS NE / TEAMSPTSNE@UNDERARMOUR.COM

### WEST

TEAM SPORTS WC / TEAMSPTSWC@UNDERARMOUR.COM  
TEAM SPORTS SW / TEAMSPTS@UNDERARMOUR.COM

**ALL TEAM SPORTS ORDERS AND QUESTIONS PLEASE USE THE FOLLOWING:**

1.888.828.1547  
Corporate Headquarters  
1020 Hull Street  
Baltimore, MD 21230

**CORPORATE OFFICE HOURS OF OPERATION**

Monday through Friday, 8:30am – 5:30pm, EST.

**UNDER ARMOUR® B2B – ONLINE ORDERING**

armourhouse.underarmour.com

- 24/7 access to check inventory and place orders
- Ability to track orders and shipments
- Priority product allocation
- Faster processing time

**UNDER ARMOUR® B2B – SUPPORT**

B2B\_support@underarmour.com

**UNDER ARMOUR® RETURN POLICY**

Under Armour® stands behind its gear and EXPECTS nothing less than perfection. If you have received a defective product, an incorrect size, or an incorrect order, please contact us immediately for a return authorization number so that we can quickly process your return and ensure your satisfaction.

ALL RETURNS MUST BE COMPLETED WITHIN 30 DAYS OF RECEIPT AND MUST BE IN REASONABLE CONDITION. ALL RETURNS MUST HAVE THE RA# CLEARLY MARKED ON THE CARTON. ALL RETURNS ARE SUBJECT TO A 15% RE-STOCKING FEE.

Should you need to return or exchange an item, you MUST include your RA#, a copy of your invoice, and an explanation in writing as to why you are returning the item. Send your return to the marked address on your pack list. If you are exchanging merchandise, you are responsible for the cost of returning the product. Original shipping costs are non-refundable. All returned merchandise must be received in new, resalable condition.

**ODH RETURNS:**

Under Armour Returns  
RA#  
7030 Tradepoint Ave  
Dock Door 69  
Sparrows Point, MD 21219

**RIALTO RETURNS:**

Under Armour Returns  
RA#  
2510 W Walnut Ave  
Rialto, CA 92376

**NASHVILLE RETURNS:**

Under Armour Returns  
RA#  
13 Athlete's Way  
Mt Juliet, TN 37122

**UNDER ARMOUR® CANCELLATION POLICY**

Any request for cancellation of an order for UA products must be made, in writing, through the customer's UA Sales Representative. A request to cancel an order must be made more than 30 days before the customer's original desired ship date. All cancellations are subject to UA approval.

**ALL PRICES SET FORTH HEREIN ARE SUBJECT TO CHANGE WITHOUT NOTICE.**

© 2023 Under Armour®. All rights reserved. All trademarks, images, photographs, logos, and graphics are owned or controlled by Under Armour®.

Confidential and business proprietary information for internal Under Armour®, Inc. use only. Reproduction is strictly prohibited.

**UNDER ARMOUR® PERFORMANCE**  
SPRING 2024