



RUNNING

Spring 2024



UNDER ARMOUR

**THE ONLY
WAY IS
THROUGH.**





VISION

TO INSPIRE YOU WITH PERFORMANCE
SOLUTIONS YOU NEVER KNEW
YOU NEEDED BUT CAN'T IMAGINE
LIVING WITHOUT.

MISSION

UNDER ARMOUR
MAKES YOU BETTER.

RUNNING —

- 002 M'S RUNNING UNIFORMS
- 032 M'S RUNNING APPAREL
- 036 W'S RUNNING UNIFORMS
- 064 W'S RUNNING APPAREL
- 066 RUNNING FOOTWEAR
- 074 MEN'S AF TRAINING
- 084 WOMEN'S AF TRAINING
- 090 UNIFORM ORDERING INFO





RUNNING ARMOURFUSE

- Brilliant, vibrant team colors permanently fused directly into textiles
- Limitless customization, all-inclusive pricing with exclusive UA designs and customized prints
- 37 different colors and 16 prints available
- 6 piece minimum order



ARMOURFUSE® RUNNING

UNDER ARMOUR® TEAM SPRING 24  UATEAMCATALOGS.COM





AF PRIMETIME SPEEDSUIT

SM-2XL, OVERSIZE 3XL, 4XL

STYLE	SIZE	PRICE
UITUTCM (M)	SM-2XL	\$135.00

- Smooth, powerful knit fabric for superior performance
- UA engineered mesh with Microthread technology delivers true breathability in a light, durable, fast-drying fabric
- Center-front zipper for easy on-off performance
- Lined interior gusset
- 2-ply lower body

OVERSIZED SURCHARGE +\$5 PER SIZE



SUPER SPORT



AF PRIMETIME TOPS

SM-2XL, OVERSIZE 3XL, 4XL

COMPRESSION SINGLET	SIZE	PRICE
UTJC3M (M)	SM-2XL	\$93.00

FITTED SINGLET	SIZE	PRICE
UTJF4M (M)	SM-2XL	\$93.00

LOOSE SHORTSLEEVE	SIZE	PRICE
UTJL5M (M)	SM-2XL	\$93.00

- Smooth, lightweight knit fabric for superior performance
- UA engineered mesh with Microthread Technology deliver true breathability in a light, durable, fast-drying fabric
- Singlets: Athletic racerback design unlocks mobility
- Shortsleeve: Raglan sleeves for maximum mobility

OVERSIZED SURCHARGE +\$5 PER SIZE

AF LOOSE BOTTOMS

SM-2XL, OVERSIZE 3XL, 4XL, YXS-YXL

SPLIT SHORT 2.0	SIZE	PRICE
UTSW3M (M)	SM-2XL	\$93.00

- Updated streamlined fit

SPLIT SHORT	SIZE	PRICE
UTSSPM (M)	SM-2XL	\$70.50
UTSSPY (Y)	YXS-YXL	\$65.00

- Ultra lightweight and durable sublimated woven fabric with internal liner
- 2 ½" inseam

7" SHORT 2.0	SIZE	PRICE
UTSW2M (M)	SM-2XL	\$103.00

- Updated streamlined fit

7" SHORT	SIZE	PRICE
UTS2M (M)	SM-2XL	\$80.50

- Ultra lightweight and durable sublimated woven fabric
- 7" Inseam
- +1, -1" inseam length options available

OVERSIZED SURCHARGE +\$5 PER SIZE

AF COMPRESSION BOTTOMS

SM-2XL, OVERSIZE 3XL, 4XL

TRACK LEGGING	SIZE	PRICE
UTLC1M (M)	SM-2XL	\$96.00

COMPRESSION SHORT	SIZE	PRICE
UTSC1M (M)	SM-2XL	\$80.50

- Signature HeatGear® fabrication with 4-way stretch
- Legging has drawcord at waist and zipper closure at ankle
- Short has 10" inseam and drawcord closure on interior waistband

OVERSIZED SURCHARGE +\$5 PER SIZE

SUBLIMATED PANEL ON FRONT BELOW KNEE ON LEGGING AND ABOVE KNEE ON SHORT.
REST OF GARMENT IS DYED IN ONE OF THE FOLLOWING COLORS:

BLK GPH MDN RED RYL



BACK VIEW

ACCELERATE

DESIGN: LAST SEASON OFFERED
IN PRIMETIME

COMPRESSION SINGLET WITH
SPLIT SHORT



ACCELERATE

DESIGN: LAST SEASON OFFERED
IN PRIMETIME

LOOSE SHORTSLEEVE WITH
COMPRESSION SHORT



ACCELERATE

DESIGN: LAST SEASON OFFERED
IN PRIMETIME

FITTED SINGLET WITH
SPLIT SHORT



AF PRIMETIME TOPS

SM-2XL, OVERSIZE 3XL, 4XL

COMPRESSION SINGLET	SIZE	PRICE
UTJC3M (M)	SM-2XL	\$93.00

FITTED SINGLET	SIZE	PRICE
UTJF4M (M)	SM-2XL	\$93.00

LOOSE SHORTSLEEVE	SIZE	PRICE
UTJL5M (M)	SM-2XL	\$93.00

- Smooth, lightweight knit fabric for superior performance
- UA engineered mesh with Microthread Technology deliver true breathability in a light, durable, fast-drying fabric
- Singlets: Athletic racerback design unlocks mobility
- Shortsleeve: Raglan sleeves for maximum mobility

OVERSIZED SURCHARGE +\$5 PER SIZE

AF LOOSE BOTTOMS

SM-2XL, OVERSIZE 3XL, 4XL, YXS-YXL

SPLIT SHORT 2.0	SIZE	PRICE
UTSW3M (M)	SM-2XL	\$93.00

- Updated streamlined fit

SPLIT SHORT	SIZE	PRICE
UTSSPM (M)	SM-2XL	\$70.50
UTSSPY (Y)	YXS-YXL	\$65.00

- Ultra lightweight and durable sublimated woven fabric with internal liner
- 2 ½" inseam

7" SHORT 2.0	SIZE	PRICE
UTSW2M (M)	SM-2XL	\$103.00

- Updated streamlined fit

7" SHORT	SIZE	PRICE
UTS2M (M)	SM-2XL	\$80.50

- Ultra lightweight and durable sublimated woven fabric
- 7" Inseam
- +1, -1" inseam length options available

OVERSIZED SURCHARGE +\$5 PER SIZE

AF COMPRESSION BOTTOMS

SM-2XL, OVERSIZE 3XL, 4XL

TRACK LEGGING	SIZE	PRICE
UTLC1M (M)	SM-2XL	\$96.00

COMPRESSION SHORT	SIZE	PRICE
UTSC1M (M)	SM-2XL	\$80.50

- Signature HeatGear® fabrication with 4-way stretch
- Legging has drawcord at waist and zipper closure at ankle
- Short has 10" inseam and drawcord closure on interior waistband

OVERSIZED SURCHARGE +\$5 PER SIZE

SUBLIMATED PANEL ON FRONT BELOW KNEE ON LEGGING AND ABOVE KNEE ON SHORT.
REST OF GARMENT IS DYED IN ONE OF THE FOLLOWING COLORS:

BLK GPH MDN RED RYL



BACK VIEW

BOLT

DESIGN: LAST SEASON OFFERED
IN PRIMETIME

COMPRESSION SINGLET WITH
COMPRESSION SHORT



BOLT

DESIGN: LAST SEASON OFFERED
IN PRIMETIME

LOOSE SHORTSLEEVE WITH
TRACK LEGGING



BOLT

DESIGN: LAST SEASON OFFERED
IN PRIMETIME

FITTED SINGLET WITH
COMPRESSION SHORT



AF PRIMETIME TOPS

SM-2XL, OVERSIZE 3XL, 4XL

COMPRESSION SINGLET	SIZE	PRICE
UTJC3M (M)	SM-2XL	\$93.00
FITTED SINGLET		
UTJF4M (M)	SM-2XL	\$93.00
LOOSE SHORTSLEEVE		
UTJL5M (M)	SM-2XL	\$93.00

- Smooth, lightweight knit fabric for superior performance
- UA engineered mesh with Microthread Technology deliver true breathability in a light, durable, fast- drying fabric
- Singlets: Athletic racerback design unlocks mobility
- Shortsleeve: Raglan sleeves for maximum mobility

OVERSIZED SURCHARGE +\$5 PER SIZE

AF LOOSE BOTTOMS

SM-2XL, OVERSIZE 3XL, 4XL, YXS-YXL

SPLIT SHORT 2.0	SIZE	PRICE
UTSW3M (M)	SM-2XL	\$93.00
SPLIT SHORT		
UTSSPM (M)	SM-2XL	\$70.50
UTSSPY (Y)	YXS-YXL	\$65.00

- Updated streamlined fit
- Ultra lightweight and durable sublimated woven fabric with internal liner
- 2 ½" inseam

7" SHORT 2.0	SIZE	PRICE
UTSW2M (M)	SM-2XL	\$103.00
7" SHORT		
UTS2M (M)	SM-2XL	\$80.50

- Updated streamlined fit
- Ultra lightweight and durable sublimated woven fabric
- 7" Inseam
- +1, -1" inseam length options available

OVERSIZED SURCHARGE +\$5 PER SIZE

AF COMPRESSION BOTTOMS

SM-2XL, OVERSIZE 3XL, 4XL

TRACK LEGGING	SIZE	PRICE
UTLC1M (M)	SM-2XL	\$96.00
COMPRESSION SHORT		
UTSC1M (M)	SM-2XL	\$80.50

- Signature HeatGear® fabrication with 4-way stretch
- Legging has drawcord at waist and zipper closure at ankle
- Short has 10" inseam and drawcord closure on interior waistband

OVERSIZED SURCHARGE +\$5 PER SIZE

SUBLIMATED PANEL ON FRONT BELOW KNEE ON LEGGING AND ABOVE KNEE ON SHORT.
REST OF GARMENT IS DYED IN ONE OF THE FOLLOWING COLORS:

BLK GPH MDN RED RYL



STRAIGHTAWAY

DESIGN: LAST SEASON OFFERED
IN PRIMETIME

COMPRESSION SINGLET WITH
SPLIT SHORT



ARMOURFUSE® UNIFORMS // ORDERING INFORMATION AND CUSTOMER SERVICE: 1-888-871-0990 // www.underarmourteamuniforms.com

FILL-IN LIFECYCLE TIMING FOUND ON PAGE 97. DECORATION OPTIONS AND ORDERING INFORMATION ARE AVAILABLE ON PAGES 90-97.



BACK VIEW

STRAIGHTAWAY

DESIGN: LAST SEASON OFFERED
IN PRIMETIME

LOOSE SHORTSLEEVE WITH
COMPRESSION SHORT



BACK VIEW

STRAIGHTAWAY

DESIGN: LAST SEASON OFFERED
IN PRIMETIME

FITTED SINGLET WITH
TRACK LEGGING



AF PRIMETIME TOPS

SM-2XL, OVERSIZE 3XL, 4XL

COMPRESSION SINGLET	SIZE	PRICE
UTJC3M (M)	SM-2XL	\$93.00
FITTED SINGLET		
UTJF4M (M)	SM-2XL	\$93.00
LOOSE SHORTSLEEVE		
UTJL5M (M)	SM-2XL	\$93.00

- Smooth, lightweight knit fabric for superior performance
- UA engineered mesh with Microthread Technology deliver true breathability in a light, durable, fast-drying fabric
- Singlets: Athletic racerback design unlocks mobility
- Shortsleeve: Raglan sleeves for maximum mobility

OVERSIZED SURCHARGE +\$5 PER SIZE



AF LOOSE BOTTOMS

SM-2XL, OVERSIZE 3XL, 4XL, YXS-YXL

SPLIT SHORT 2.0	SIZE	PRICE
UTSW3M (M)	SM-2XL	\$93.00
SPLIT SHORT		
UTSSPM (M)	SM-2XL	\$70.50
UTSSPY (Y)	YXS-YXL	\$65.00

- Updated streamlined fit

7" SHORT 2.0	SIZE	PRICE
UTSW2M (M)	SM-2XL	\$103.00

- Updated streamlined fit

7" SHORT	SIZE	PRICE
UTS2M (M)	SM-2XL	\$80.50

- Ultra lightweight and durable sublimated woven fabric with internal liner
- 2 ½" inseam
- 7" Inseam
- +1, -1" inseam length options available

OVERSIZED SURCHARGE +\$5 PER SIZE



AF COMPRESSION BOTTOMS

SM-2XL, OVERSIZE 3XL, 4XL

TRACK LEGGING	SIZE	PRICE
UTLC1M (M)	SM-2XL	\$96.00
COMPRESSION SHORT		
UTSC1M (M)	SM-2XL	\$80.50

- Signature HeatGear® fabrication with 4-way stretch
- Legging has drawcord at waist and zipper closure at ankle
- Short has 10" inseam and drawcord closure on interior waistband

OVERSIZED SURCHARGE +\$5 PER SIZE

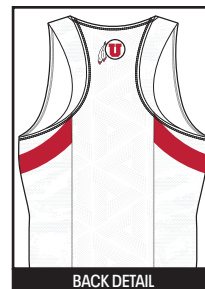
SUBLIMATED PANEL ON FRONT BELOW KNEE ON LEGGING AND ABOVE KNEE ON SHORT. REST OF GARMENT IS DYED IN ONE OF THE FOLLOWING COLORS:

BLK GPH MDN RED RYL

SLEEK BREAK

DESIGN: LAST SEASON OFFERED IN PRIMETIME

COMPRESSION SINGLET WITH TRACK LEGGING



BACK DETAIL



SLEEK BREAK

DESIGN: LAST SEASON OFFERED
IN PRIMETIME

LOOSE SHORTSLEEVE WITH
SPLIT SHORT



BACK DETAIL

SLEEK BREAK

DESIGN: LAST SEASON OFFERED
IN PRIMETIME

FITTED SINGLET WITH
COMPRESSION SHORT



BACK DETAIL

AF PRIMETIME TOPS

SM-2XL, OVERSIZE 3XL, 4XL

COMPRESSION SINGLET	SIZE	PRICE
UTJC3M (M)	SM-2XL	\$93.00

FITTED SINGLET	SIZE	PRICE
UTJF4M (M)	SM-2XL	\$93.00

LOOSE SHORTSLEEVE	SIZE	PRICE
UTJL5M (M)	SM-2XL	\$93.00

- Smooth, lightweight knit fabric for superior performance
- UA engineered mesh with Microthread Technology deliver true breathability in a light, durable, fast-drying fabric
- Singlets: Athletic racerback design unlocks mobility
- Shortsleeve: Raglan sleeves for maximum mobility

OVERSIZED SURCHARGE +\$5 PER SIZE



AF LOOSE BOTTOMS

SM-2XL, OVERSIZE 3XL, 4XL, YXS-YXL

SPLIT SHORT 2.0	SIZE	PRICE
UTSW3M (M)	SM-2XL	\$93.00

- Updated streamlined fit

SPLIT SHORT	SIZE	PRICE
UTSSPM (M)	SM-2XL	\$70.50
UTSSPY (Y)	YXS-YXL	\$65.00

- Ultra lightweight and durable sublimated woven fabric with internal liner
- 2 ½" inseam

7" SHORT 2.0	SIZE	PRICE
UTSW2M (M)	SM-2XL	\$103.00

- Updated streamlined fit

7" SHORT	SIZE	PRICE
UTS2M (M)	SM-2XL	\$80.50

- Ultra lightweight and durable sublimated woven fabric
- 7" Inseam
- +1, -1" inseam length options available

OVERSIZED SURCHARGE +\$5 PER SIZE



AF COMPRESSION BOTTOMS

SM-2XL, OVERSIZE 3XL, 4XL

TRACK LEGGING	SIZE	PRICE
UTLC1M (M)	SM-2XL	\$96.00

COMPRESSION SHORT	SIZE	PRICE
UTSC1M (M)	SM-2XL	\$80.50

- Signature HeatGear® fabrication with 4-way stretch
- Legging has drawcord at waist and zipper closure at ankle
- Short has 10" inseam and drawcord closure on interior waistband

OVERSIZED SURCHARGE +\$5 PER SIZE

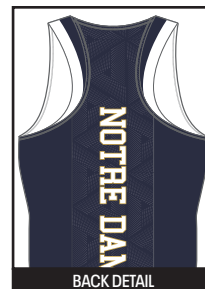
SUBLIMATED PANEL ON FRONT BELOW KNEE ON LEGGING AND ABOVE KNEE ON SHORT. REST OF GARMENT IS DYED IN ONE OF THE FOLLOWING COLORS:

BLK GPH MDN RED RYL

RACEWAY

DESIGN: LAST SEASON OFFERED IN PRIMETIME

COMPRESSION SINGLET WITH TRACK LEGGING



BACK DETAIL



RACEWAY

DESIGN: LAST SEASON OFFERED
IN PRIMETIME

LOOSE SHORTSLEEVE WITH
SPLIT SHORT



BACK DETAIL



RACEWAY

DESIGN: LAST SEASON OFFERED
IN PRIMETIME

FITTED SINGLET WITH
COMPRESSION SHORT



BACK DETAIL

AF PRIMETIME TOPS

SM-2XL, OVERSIZE 3XL, 4XL

COMPRESSION SINGLET	SIZE	PRICE
UTJC3M (M)	SM-2XL	\$93.00

FITTED SINGLET	SIZE	PRICE
UTJF4M (M)	SM-2XL	\$93.00

LOOSE SHORTSLEEVE	SIZE	PRICE
UTJL5M (M)	SM-2XL	\$93.00

- Smooth, lightweight knit fabric for superior performance
- UA engineered mesh with Microthread Technology deliver true breathability in a light, durable, fast-drying fabric
- Singlets: Athletic racerback design unlocks mobility
- Shortsleeve: Raglan sleeves for maximum mobility

OVERSIZED SURCHARGE +\$5 PER SIZE

AF LOOSE BOTTOMS

SM-2XL, OVERSIZE 3XL, 4XL, YXS-YXL

SPLIT SHORT 2.0	SIZE	PRICE
UTSW3M (M)	SM-2XL	\$93.00

- Updated streamlined fit

SPLIT SHORT	SIZE	PRICE
UTSSPM (M)	SM-2XL	\$70.50
UTSSPY (Y)	YXS-YXL	\$65.00

- Ultra lightweight and durable sublimated woven fabric with internal liner
- 2 ½" inseam

7" SHORT 2.0	SIZE	PRICE
UTSW2M (M)	SM-2XL	\$103.00

- Updated streamlined fit

7" SHORT	SIZE	PRICE
UTS2M (M)	SM-2XL	\$80.50

- Ultra lightweight and durable sublimated woven fabric
- 7" Inseam
- +1, -1" inseam length options available

OVERSIZED SURCHARGE +\$5 PER SIZE

AF COMPRESSION BOTTOMS

SM-2XL, OVERSIZE 3XL, 4XL

TRACK LEGGING	SIZE	PRICE
UTLC1M (M)	SM-2XL	\$96.00

COMPRESSION SHORT	SIZE	PRICE
UTSC1M (M)	SM-2XL	\$80.50

- Signature HeatGear® fabrication with 4-way stretch
- Legging has drawcord at waist and zipper closure at ankle
- Short has 10" inseam and drawcord closure on interior waistband

OVERSIZED SURCHARGE +\$5 PER SIZE

SUBLIMATED PANEL ON FRONT BELOW KNEE ON LEGGING AND ABOVE KNEE ON SHORT.
REST OF GARMENT IS DYED IN ONE OF THE FOLLOWING COLORS:

BLK GPH MDN RED RYL



FLEETACY

DESIGN: LAST SEASON OFFERED
IN PRIMETIME

FITTED TANK WITH SPLIT SHORT



FLEETACY

DESIGN: LAST SEASON OFFERED
IN PRIMETIME

FITTED SHORTSLEEVE WITH 7" SHORT



FLEETACY

DESIGN: LAST SEASON OFFERED
IN PRIMETIME

COMPRESSION SINGLET WITH
COMPRESSION SHORT

AF PRIMETIME TOPS

SM-2XL, OVERSIZE 3XL, 4XL

COMPRESSION SINGLET	SIZE	PRICE
UTJC3M (M)	SM-2XL	\$93.00

FITTED SINGLET

UTJF4M (M)	SM-2XL	\$93.00
------------	--------	---------

LOOSE SHORTSLEEVE

UTJL5M (M)	SM-2XL	\$93.00
------------	--------	---------

- Smooth, lightweight knit fabric for superior performance
- UA engineered mesh with Microthread Technology deliver true breathability in a light, durable, fast- drying fabric
- Singlets: Athletic racerback design unlocks mobility
- Shortsleeve: Raglan sleeves for maximum mobility

OVERSIZED SURCHARGE +\$5 PER SIZE

AF LOOSE BOTTOMS

SM-2XL, OVERSIZE 3XL, 4XL, YXS-YXL

SPLIT SHORT 2.0	SIZE	PRICE
UTSW3M (M)	SM-2XL	\$93.00

- Updated streamlined fit

SPLIT SHORT	SIZE	PRICE
UTSSPM (M)	SM-2XL	\$70.50
UTSSPY (Y)	YXS-YXL	\$65.00

- Ultra lightweight and durable sublimated woven fabric with internal liner
- 2 ½" inseam

7" SHORT 2.0	SIZE	PRICE
UTSW2M (M)	SM-2XL	\$103.00

- Updated streamlined fit

7" SHORT	SIZE	PRICE
UTS2M (M)	SM-2XL	\$80.50

- Ultra lightweight and durable sublimated woven fabric
- 7" Inseam
- +1, -1" inseam length options available

OVERSIZED SURCHARGE +\$5 PER SIZE

AF COMPRESSION BOTTOMS

SM-2XL, OVERSIZE 3XL, 4XL

TRACK LEGGING	SIZE	PRICE
UTLC1M (M)	SM-2XL	\$96.00

COMPRESSION SHORT

UTSC1M (M)	SM-2XL	\$80.50
------------	--------	---------

- Signature HeatGear® fabrication with 4-way stretch
- Legging has drawcord at waist and zipper closure at ankle
- Short has 10" inseam and drawcord closure on interior waistband

OVERSIZED SURCHARGE +\$5 PER SIZE

SUBLIMATED PANEL ON FRONT BELOW KNEE ON LEGGING AND ABOVE KNEE ON SHORT.
REST OF GARMENT IS DYED IN ONE OF THE FOLLOWING COLORS:

BLK GPH MDN RED RYL



HYPER LAUNCH

DESIGN: LAST SEASON OFFERED
IN PRIMETIME

FITTED TANK WITH SPLIT SHORT



HYPER LAUNCH

DESIGN: LAST SEASON OFFERED
IN PRIMETIME

FITTED SHORTSLEEVE WITH 7" SHORT



HYPER LAUNCH

DESIGN: LAST SEASON OFFERED
IN PRIMETIME

COMPRESSION SINGLET WITH
COMPRESSION SHORT





ARMOURFUSE® RUNNING

UNDER ARMOUR® TEAM SPRING 24  UATEAMCATALOGS.COM

12

AF SHOWTIME 2 TOPS

SM-2XL, OVERSIZE 3XL, 4XL, YSM-YXL

COMP. SINGLET	SIZE	PRICE
UTJCSM (M)	SM-2XL	\$82.50

FITTED SINGLET	SIZE	PRICE
UTJFSM (M)	SM-2XL	\$82.50
UTJFSY (Y)	YSM-YXL	\$67.00

- Signature lightweight 4-way stretch knit HeatGear® fabrication with maximum breathability

LOOSE SHORTSLEEVE	SIZE	PRICE
UTJLSM (M)	SM-2XL	\$82.50

- Sublimated 4-way stretch flat knit front with stretch mesh back

ADDITIONAL LENGTH OPTIONS FOUND ON PAGE 95
OVERSIZED SURCHARGE +\$5 PER SIZE

AF LOOSE BOTTOMS

SM-2XL, OVERSIZE 3XL, 4XL, YXS-YXL

SPLIT SHORT	SIZE	PRICE
UTSSPM (M)	SM-2XL	\$70.50
UTSSPY (Y)	YXS-YXL	\$65.00

- Ultra lightweight and durable sublimated woven fabric with internal liner
- 2 ½" inseam

7" SHORT	SIZE	PRICE
UTS2M (M)	SM-2XL	\$80.50

- Ultra lightweight and durable sublimated woven fabric
- 7" Inseam
- +1, -1" inseam length options available

OVERSIZED SURCHARGE +\$5 PER SIZE

AF COMPRESSION BOTTOMS

SM-2XL, OVERSIZE 3XL, 4XL

TRACK LEGGING	SIZE	PRICE
UTLC1M (M)	SM-2XL	\$96.00

COMPRESSION SHORT	SIZE	PRICE
UTSC1M (M)	SM-2XL	\$80.50

- Signature HeatGear® fabrication with 4-way stretch
- Legging has drawcord at waist and zipper closure at ankle
- Short has 10" inseam and drawcord closure on interior waistband

OVERSIZED SURCHARGE +\$5 PER SIZE
SUBLIMATED PANEL ON FRONT BELOW KNEE ON LEGGING AND ABOVE KNEE ON SHORT.
REST OF GARMENT IS DYED IN ONE OF THE FOLLOWING COLORS:

BLK GPH MDN RED RYL



BACK VIEW

ACCELERATE

COMPRESSION SINGLET WITH
TRACK LEGGING





ACCELERATE

LOOSE SHORTSLEEVE WITH
COMPRESSION SHORT



ACCELERATE

FITTED SINGLET WITH
SPLIT SHORT

AF SHOWTIME 2 TOPS

SM-2XL, OVERSIZE 3XL, 4XL, YSM-YXL

COMP. SINGLET	SIZE	PRICE
UTJCSM (M)	SM-2XL	\$82.50
FITTED SINGLET		
UTJFSM (M)	SM-2XL	\$82.50
UTJFSY (Y)	YSM-YXL	\$67.00

- Signature lightweight 4-way stretch knit HeatGear® fabrication with maximum breathability

LOOSE SHORTSLEEVE	SIZE	PRICE
UTJLSM (M)	SM-2XL	\$82.50

- Sublimated 4-way stretch flat knit front with stretch mesh back

ADDITIONAL LENGTH OPTIONS FOUND ON PAGE 95
OVERSIZED SURCHARGE +\$5 PER SIZE

AF LOOSE BOTTOMS

SM-2XL, OVERSIZE 3XL, 4XL, YXS-YXL

SPLIT SHORT	SIZE	PRICE
UTSSPM (M)	SM-2XL	\$70.50
UTSSPY (Y)	YXS-YXL	\$65.00

- Ultra lightweight and durable sublimated woven fabric with internal liner
- 2 ½" inseam

7" SHORT	SIZE	PRICE
UTS2M (M)	SM-2XL	\$80.50

- Ultra lightweight and durable sublimated woven fabric
- 7" Inseam
- +1, -1" inseam length options available

OVERSIZED SURCHARGE +\$5 PER SIZE

AF COMPRESSION BOTTOMS

SM-2XL, OVERSIZE 3XL, 4XL

TRACK LEGGING	SIZE	PRICE
UTLC1M (M)	SM-2XL	\$96.00

COMPRESSION SHORT	SIZE	PRICE
UTSC1M (M)	SM-2XL	\$80.50

- Signature HeatGear® fabrication with 4-way stretch
- Legging has drawcord at waist and zipper closure at ankle
- Short has 10" inseam and drawcord closure on interior waistband

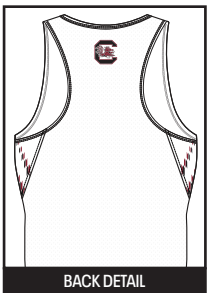
OVERSIZED SURCHARGE +\$5 PER SIZE
SUBLIMATED PANEL ON FRONT BELOW KNEE ON LEGGING AND ABOVE KNEE ON SHORT.
REST OF GARMENT IS DYED IN ONE OF THE FOLLOWING COLORS:

BLK GPH MDN RED RYL



BOLT

COMPRESSION SINGLET WITH
TRACK LEGGING





BOLT

LOOSE SHORTSLEEVE WITH
SPLIT SHORT



BACK DETAIL

BOLT

FITTED SINGLET WITH
COMPRESSION SHORT



BACK DETAIL

AF SHOWTIME 2 TOPS

SM-2XL, OVERSIZE 3XL, 4XL, YSM-YXL

COMP. SINGLET	SIZE	PRICE
UTJCSM (M)	SM-2XL	\$82.50

FITTED SINGLET	SIZE	PRICE
UTJFSM (M)	SM-2XL	\$82.50
UTJFSY (Y)	YSM-YXL	\$67.00

- Signature lightweight 4-way stretch knit HeatGear® fabrication with maximum breathability

LOOSE SHORTSLEEVE	SIZE	PRICE
UTJLSM (M)	SM-2XL	\$82.50

- Sublimated 4-way stretch flat knit front with stretch mesh back

ADDITIONAL LENGTH OPTIONS FOUND ON PAGE 95
OVERSIZED SURCHARGE +\$5 PER SIZE

AF LOOSE BOTTOMS

SM-2XL, OVERSIZE 3XL, 4XL, YXS-YXL

SPLIT SHORT	SIZE	PRICE
UTSSPM (M)	SM-2XL	\$70.50
UTSSPY (Y)	YXS-YXL	\$65.00

- Ultra lightweight and durable sublimated woven fabric with internal liner
- 2 ½" inseam

7" SHORT	SIZE	PRICE
UTS2M (M)	SM-2XL	\$80.50

- Ultra lightweight and durable sublimated woven fabric
- 7" Inseam
- +1, -1" inseam length options available

OVERSIZED SURCHARGE +\$5 PER SIZE

AF COMPRESSION BOTTOMS

SM-2XL, OVERSIZE 3XL, 4XL

TRACK LEGGING	SIZE	PRICE
UTLC1M (M)	SM-2XL	\$96.00

COMPRESSION SHORT	SIZE	PRICE
UTSC1M (M)	SM-2XL	\$80.50

- Signature HeatGear® fabrication with 4-way stretch
- Legging has drawcord at waist and zipper closure at ankle
- Short has 10" inseam and drawcord closure on interior waistband

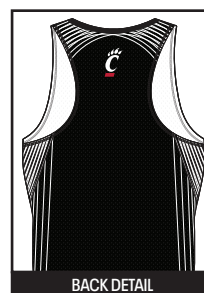
OVERSIZED SURCHARGE +\$5 PER SIZE
SUBLIMATED PANEL ON FRONT BELOW KNEE ON LEGGING AND ABOVE KNEE ON SHORT.
REST OF GARMENT IS DYED IN ONE OF THE FOLLOWING COLORS:

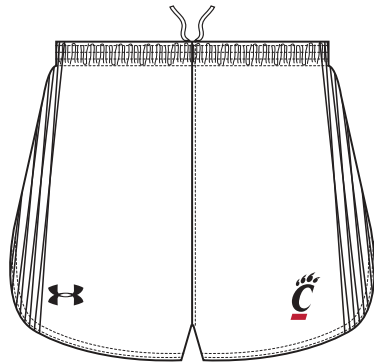
BLK GPH MDN RED RYL



STRAIGHTAWAY

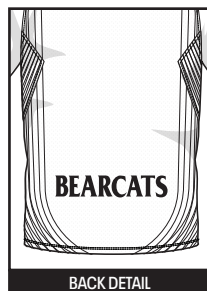
COMPRESSION SINGLET WITH
TRACK LEGGING





STRAIGHTAWAY

LOOSE SHORTSLEEVE WITH
SPLIT SHORT



BACK DETAIL

STRAIGHTAWAY

FITTED SINGLET WITH
COMPRESSION SHORT



BACK DETAIL

ST PACE SINGLET

FIRST SHIP: C/O // SM-2XL, OVERSIZE 3XL

STYLE	SIZE	PACKAGE	PRICE
UTJ200M (M)	SM-2XL	BLANK	\$47.50
		1-COLOR SCREEN	\$53.00
		2-COLOR SCREEN	\$58.00
UTJ200Y (Y)	YXS-YXL	BLANK	\$42.50

- Smooth, lightweight knit fabric for superior performance (main body from prime time top)
- Singlets: Athletic racerback design
- New fitted sizing composition will accommodate a wide variety of body types
- Team Gear Color blocking with contrasting inserts

*PACKAGE INCLUDES TEAM NAME/LOGO ONLY
OVERSIZED SURCHARGE +\$5 PER SIZE



BK/WH WH/BK GP/WH NA/WH SC/WH RO/WH DG/WH MA/WH PU/WH CA/WH

ST PACE SPLIT SHORT

FIRST SHIP: C/O // SM-2XL, OVERSIZE 3XL

STYLE	SIZE	PACKAGE	PRICE
UTS605M (M)	SM-2XL	BLANK	\$47.50
		1-COLOR SCREEN	\$53.00
		2-COLOR SCREEN	\$58.00

- Ultra lightweight and durable sublimated woven fabric
- Fitted construction and updated angular hem with bartack security
- Forward side seam placement to align uniform color blocking
- Inner brief
- 2.5" Inseam

*PACKAGE INCLUDES TEAM NAME/LOGO ONLY
OVERSIZED SURCHARGE +\$5 PER SIZE



BK GP NA SC RO DG MA PU CA



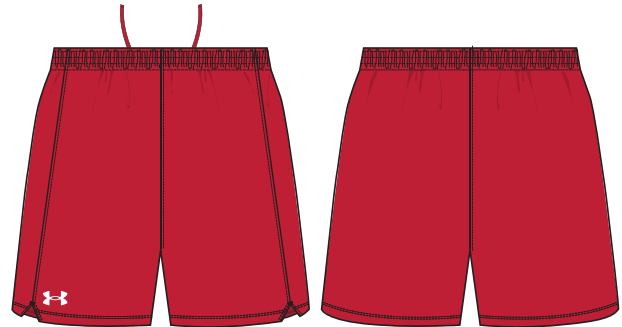
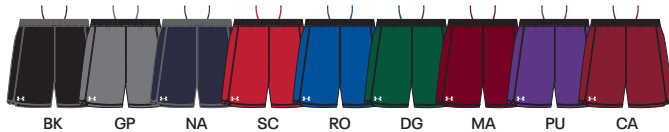
ST PACE 7" SHORT

FIRST SHIP: C/O // SM-2XL, OVERSIZE 3XL

STYLE	SIZE	PACKAGE	PRICE
UTS600M (M)	SM-2XL	BLANK	\$47.50
		1-COLOR SCREEN	\$53.00
		2-COLOR SCREEN	\$58.00

- Ultra Lightweight and durable woven fabric
- Fitted construction and updated angular hem with bartack security
- Forward side seam placement to align uniform color blocking
- 7" inseam

*PACKAGE INCLUDES TEAM NAME/LOGO ONLY
OVERSIZED SURCHARGE +\$5 PER SIZE



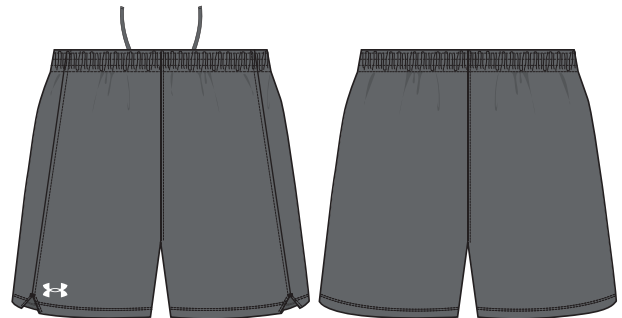
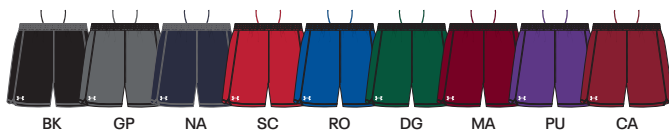
ST YOUTH PACE 5" SHORT

FIRST SHIP: C/O // YXS-YXL

STYLE	SIZE	PACKAGE	PRICE
UTS600Y (Y)	YXS-YXL	BLANK	\$42.50
		1-COLOR SCREEN	\$48.00
		2-COLOR SCREEN	\$53.00

- Ultra Lightweight and durable woven fabric
- Fitted construction and updated angular hem with bartack security
- Forward side seam placement to align uniform color blocking
- 5" inseam

*PACKAGE INCLUDES TEAM NAME/LOGO ONLY



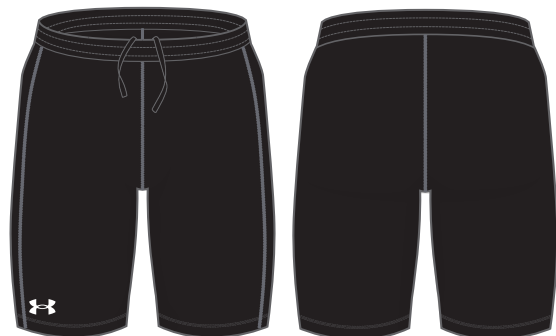
ST PACE 10" COMP SHORT

FIRST SHIP: C/O // SM-2XL, OVERSIZE 3XL

STYLE	SIZE	PACKAGE	PRICE
UTS610M (M)	SM-2XL	BLANK	\$63.00
		1-COLOR SCREEN	\$68.50
		2-COLOR SCREEN	\$73.50

- Signature HeatGear® fabrication with 4-way stretch
- Covered Elastic waistband with internal drawcord
- Forward side seam placement to align uniform color blocking
- 10" Inseam

*PACKAGE INCLUDES TEAM NAME/LOGO ONLY
OVERSIZED SURCHARGE +\$5 PER SIZE



KICK SINGLET

SM-2XL, OVERSIZE 3XL

STYLE	SIZE	PACKAGE	PRICE
UTJ195M (M)	SM-2XL	BLANK	\$33.00
		1-COLOR SCREEN	\$38.50
		2-COLOR SCREEN	\$43.50

- Signature moisture transport system wicks sweat to keep you dry and light
- Back stretch mesh for breathability and comfort
- Athletic colorblocking on front and back panels

*PACKAGE INCLUDES TEAM NAME/LOGO ONLY
OVERSIZED SURCHARGE +\$5 PER SIZE



BK/WH WH/WH GP/WH NA/WH SC/WH RO/WH DG/WH MA/WH

KICK SPLIT SHORT

SM-2XL, OVERSIZE 3XL

STYLE	SIZE	PACKAGE	PRICE
UTS595M (M)	SM-2XL	BLANK	\$33.00
		1-COLOR SCREEN	\$38.50
		2-COLOR SCREEN	\$43.50

- Ultra lightweight woven fabric yet still extremely durable
- Internal liner helps moisture escape & adds breathability
- Covered elastic waistband with internal drawcord and liner
- 2 1/2" inseam

*PACKAGE INCLUDES TEAM NAME/LOGO ONLY
OVERSIZED SURCHARGE +\$5 PER SIZE



BK GP NA SC RO DG MA



KICK SINGLET

SM-2XL, OVERSIZE 3XL

STYLE	SIZE	PACKAGE	PRICE
UTJ195M (M)	SM-2XL	BLANK	\$33.00
		1-COLOR SCREEN	\$38.50
		2-COLOR SCREEN	\$43.50

- Signature moisture transport system wicks sweat to keep you dry and light
- Back stretch mesh for breathability and comfort
- Athletic colorblocking on front and back panels

*PACKAGE INCLUDES TEAM NAME/LOGO ONLY
OVERSIZED SURCHARGE +\$5 PER SIZE



KICK 7" SHORT

SM-2XL, OVERSIZE 3XL, 4XL

STYLE	SIZE	PACKAGE	PRICE
UTS587M (M)	SM-2XL	BLANK	\$38.00
		1-COLOR SCREEN	\$43.50
		2-COLOR SCREEN	\$48.50

- Ultra lightweight woven fabric yet still extremely durable
- Covered elastic waistband with internal drawcord and liner
- 7" inseam

*PACKAGE INCLUDES TEAM NAME/LOGO ONLY
OVERSIZED SURCHARGE +\$5 PER SIZE



**NEW****1384546****QUALIFIER RUN HALF TIGHT****\$45.00 | FITTED | XS-3XL (3XL: 15% UPCHARGE)****FIRST SHIP: 1/1/2024 // LAST SHIP: 12/19/2027**

- Expandable center-back waistband pocket is water-resistant & keeps your phone secure, with no bouncing
- Super-soft & structured free cut fabric delivers relentless coverage & comfort
- 4-way stretch material moves better in every direction
- Material wicks sweat & dries really fast
- Laser perforations for added ventilation
- Encased elastic waistband with internal drawcord for a secure, custom fit
- Inseam: 7"



001 BLK/WHT
410 MDN/WHT

1379494 CHALLENGER TRAINING JACKET

\$65.00 | **FITTED** | SM-2XL

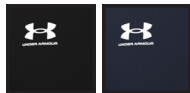
YOUTH: 1379707 | \$60.00 | YXS-YXL

FIRST SHIP: C/O

- Durable knit fabric is light, tough & breathable
- Bomber-inspired cuffs, collar & hem
- Fast-drying, wicking, & lightweight fabric for superior performance
- Fitted, with updated design lines

100% POLYESTER

Y = YOUTH OFFERING



001 Y
BLK

410
MDN

ALL COLORWAYS SOLID



1379587 CHALLENGER TRAINING PANT

\$55.00 | **FITTED** | SM-2XL

YOUTH: 1379709 | \$50.00 | YXS-YXL

FIRST SHIP: C/O

- 4-way stretch fabrication allows for greater mobility in any direction
- Fast-drying, wicking, & lightweight fabric for superior performance
- Encased elastic waistband with internal drawcord
- Bottom ankle zippers for easy on/off during training
- Fitted, with updated design lines and a tapered leg

100% POLYESTER

Y = YOUTH OFFERING



001 Y
BLK

410
MDN

ALL COLORWAYS SOLID



1365411 CHALLENGER STORM SHELL

\$80.00 | **FITTED** | SM-2XL

FIRST SHIP: C/O

- UA Storm technology repels water without sacrificing breathability
- 4-way stretch woven fabrication allows greater mobility
- Zip pockets for secure storage

87 % POLYESTER, 13 % ELASTANE

STORM



001
BLK

012
PITCH GRY

ALL COLORWAYS SOLID



1365409 CHALLENGER MIDLAYER

\$55.00 | **FITTED** | SM-2XL

FIRST SHIP: C/O

- 4-way stretch fabrication allows for greater mobility in any direction
- Fast-drying, wicking, & lightweight fabric for superior performance

100 % POLYESTER



001
BLK

012
PITCH GRY

410
MDN

001 SOLID, 012 & 410 COLORWAYS COLOR BLOCKED



NEW**1383259****UA M'S COMMAND WARM-UP FZ**

\$70.00 | LOOSE | SM-5XL, LGT-2XLT
 (3XL-5XL, TALLS: 15% UPCHARGE)

YOUTH: 1383847 | \$60.00 | YXS-YXL

FIRST SHIP: 1/1/2024

- It's French Terry you can actually work out in – same comfort, but stretchier, lighter & faster
- Material wicks sweat & dries really fast
- Secure, zip hand pockets
- Binding at cuffs & bottom hem

100% POLYESTER

heatgear Y = YOUTH OFFERING

**NEW****1383261****UA M'S COMMAND WARM-UP PANT**

\$70.00 | LOOSE | SM-5XL, LGT-2XLT
 (3XL-5XL, TALLS: 15% UPCHARGE)

YOUTH: 1383848 | \$60.00 | YXS-YXL

FIRST SHIP: 1/1/2024

- It's French Terry you can actually work out in – same comfort, but stretchier, lighter & faster
- Material wicks sweat & dries really fast
- Encased elastic waistband with internal drawcord
- Open hand pockets
- Ankle zips for easy on/off even over shoes or cleats
- Inseam: 31"

100% POLYESTER

heatgear Y = YOUTH OFFERING



31"
INSEAM

TALLS
33"
INSEAM

SIDE
POCKETS

ZIPPERED
LEG
OPENING



HEATHER PANEL DETAIL



RUNNING ARMOURFUSE

- Brilliant, vibrant team colors permanently fused directly into textiles
- Limitless customization, all-inclusive pricing with exclusive UA designs and customized prints
- 37 different colors and 16 prints available
- 6 piece minimum order



AF PRIMETIME SPEEDSUIT

XS-2XL, OVERSIZE 3XL

STYLE	SIZE	PRICE
UITUTCW (M)	XS-2XL	\$135.00

- Smooth, powerful knit fabric for superior performance
- UA engineered mesh with Microthread technology delivers true breathability in a light, durable, fast-drying fabric
- Center-front zipper for easy on-off performance
- Lined interior gusset
- 2-ply back body



SUPER SPORT



AF PRIMETIME TOPS

XS-2XL, OVERSIZE 3XL

COMPRESSION SINGLET	SIZE	PRICE
UJTJC3W (W)	XS-2XL	\$93.00

FITTED SINGLET	SIZE	PRICE
UJTJF4W (W)	XS-2XL	\$93.00

- Smooth, lightweight knit fabric for superior performance
- UA engineered mesh with Microthread Technology deliver true breathability in a light, durable, fast-drying fabric
- Athletic racerback design unlocks mobility

OVERSIZED SURCHARGE +\$5 PER SIZE

AF LOOSE BOTTOMS

XS-2XL, OVERSIZE 3XL, YXS-YXL

SPLIT SHORT 2.0	SIZE	PRICE
UTSW3W (W)	XS-2XL	\$93.00

- Updated streamlined fit

SPLIT SHORT	SIZE	PRICE
UTSSPW (W)	XS-2XL	\$70.50
UTSSPY (Y)	YXS-YXL	\$65.00

- Ultra lightweight and durable sublimated woven fabric with internal liner
- 2 ½" inseam

4" SHORT 2.0	SIZE	PRICE
UTSW2W (M)	XS-2XL	\$98.00

- Updated streamlined fit

4" SHORT	SIZE	PRICE
UTS2W (W)	XS-2XL	\$80.50

- Ultra lightweight and durable sublimated woven fabric
- 4" Inseam
- +1, -1" inseam length options available

OVERSIZED SURCHARGE +\$5 PER SIZE

AF COMPRESSION BOTTOMS

XS-2XL, OVERSIZE 3XL

MID-RISE BRIEF	SIZE	PRICE
UTS72W (W)	XS-2XL	\$51.50

- Compression brief with covered elastic waistband
- Mid-Rise construction for premium coverage and comfort
- Lined interior gusset

TRACK LEGGING	SIZE	PRICE
UTLC1W (W)	XS-2XL	\$96.00

COMPRESSION SHORT	SIZE	PRICE
UTSC1W (W)	XS-2XL	\$80.50

- Signature HeatGear® fabrication with 4-way stretch
- Legging has drawcord at waist and zipper closure at ankle
- Short has 4" inseam

OVERSIZED SURCHARGE +\$5 PER SIZE

SUBLIMATED PANEL ON FRONT BELOW KNEE ON LEGGING AND ABOVE KNEE ON SHORT. REST OF GARMENT IS DYED IN ONE OF THE FOLLOWING COLORS:

BLK GPH MDN RED RYL



ACCELERATE

DESIGN: LAST SEASON OFFERED
IN PRIMETIME

COMPRESSION SINGLET WITH
TRACK LEGGING



ARMOURFUSE® UNIFORMS // ORDERING INFORMATION AND CUSTOMER SERVICE: 1-888-871-0990 // www.underarmourteamuniforms.com

FILL-IN LIFECYCLE TIMING FOUND ON PAGE 97. DECORATION OPTIONS AND ORDERING INFORMATION ARE AVAILABLE ON PAGES 90-97.



ACCELERATE

DESIGN: LAST SEASON OFFERED
IN PRIMETIME

FITTED SINGLET WITH
COMPRESSION SHORT



ACCELERATE

DESIGN: LAST SEASON OFFERED
IN PRIMETIME

FITTED SINGLET WITH
SPLIT SHORT



AF PRIMETIME TOPS

XS-2XL, OVERSIZE 3XL

COMPRESSION SINGLET	SIZE	PRICE
UJTJC3W (W)	XS-2XL	\$93.00

FITTED SINGLET	SIZE	PRICE
UJTJF4W (W)	XS-2XL	\$93.00

- Smooth, lightweight knit fabric for superior performance
- UA engineered mesh with Microthread Technology deliver true breathability in a light, durable, fast-drying fabric
- Athletic racerback design unlocks mobility

OVERSIZED SURCHARGE +\$5 PER SIZE

AF LOOSE BOTTOMS

XS-2XL, OVERSIZE 3XL, YXS-YXL

SPLIT SHORT 2.0	SIZE	PRICE
UITSW3W (W)	XS-2XL	\$93.00

- Updated streamlined fit

SPLIT SHORT	SIZE	PRICE
UITSPPW (W)	XS-2XL	\$70.50
UITSPPY (Y)	YXS-YXL	\$65.00

- Ultra lightweight and durable sublimated woven fabric with internal liner
- 2 ½" inseam

4" SHORT 2.0	SIZE	PRICE
UITSW2W (M)	XS-2XL	\$98.00

- Updated streamlined fit

4" SHORT	SIZE	PRICE
UITS2W (W)	XS-2XL	\$80.50

- Ultra lightweight and durable sublimated woven fabric
- 4" Inseam
- +1, -1" inseam length options available

OVERSIZED SURCHARGE +\$5 PER SIZE

AF COMPRESSION BOTTOMS

XS-2XL, OVERSIZE 3XL

MID-RISE BRIEF	SIZE	PRICE
UITS72W (W)	XS-2XL	\$51.50

- Compression brief with covered elastic waistband
- Mid-Rise construction for premium coverage and comfort
- Lined interior gusset

TRACK LEGGING	SIZE	PRICE
UJTLCTW (W)	XS-2XL	\$96.00

COMPRESSION SHORT	SIZE	PRICE
UJTSCTW (W)	XS-2XL	\$80.50

- Signature HeatGear® fabrication with 4-way stretch
- Legging has drawcord at waist and zipper closure at ankle
- Short has 4" inseam

OVERSIZED SURCHARGE +\$5 PER SIZE
 SUBLIMATED PANEL ON FRONT BELOW KNEE ON LEGGING AND ABOVE KNEE ON SHORT.
 REST OF GARMENT IS DYED IN ONE OF THE FOLLOWING COLORS:

BLK GPH MDN RED RYL



BACK VIEW

BOLT

DESIGN: LAST SEASON OFFERED
 IN PRIMETIME

FITTED SINGLET WITH
 TRACK LEGGING





BOLT

DESIGN: LAST SEASON OFFERED
IN PRIMETIME

FITTED SINGLET WITH
COMPRESSION SHORT



BOLT

DESIGN: LAST SEASON OFFERED
IN PRIMETIME

COMPRESSION SINGLET WITH
SPLIT SHORT



AF PRIMETIME TOPS

XS-2XL, OVERSIZE 3XL

COMPRESSION SINGLET	SIZE	PRICE
UJTJC3W (W)	XS-2XL	\$93.00

FITTED SINGLET	SIZE	PRICE
UJTJF4W (W)	XS-2XL	\$93.00

- Smooth, lightweight knit fabric for superior performance
- UA engineered mesh with Microthread Technology deliver true breathability in a light, durable, fast-drying fabric
- Athletic racerback design unlocks mobility

OVERSIZED SURCHARGE +\$5 PER SIZE

AF LOOSE BOTTOMS

XS-2XL, OVERSIZE 3XL, YXS-YXL

SPLIT SHORT 2.0	SIZE	PRICE
UITSW3W (W)	XS-2XL	\$93.00

- Updated streamlined fit

SPLIT SHORT	SIZE	PRICE
UITSPPW (W)	XS-2XL	\$70.50
UITSPPY (Y)	YXS-YXL	\$65.00

- Ultra lightweight and durable sublimated woven fabric with internal liner
- 2 ½" inseam

4" SHORT 2.0	SIZE	PRICE
UITSW2W (M)	XS-2XL	\$98.00

- Updated streamlined fit

4" SHORT	SIZE	PRICE
UITS2W (W)	XS-2XL	\$80.50

- Ultra lightweight and durable sublimated woven fabric
- 4" Inseam
- +1, -1" inseam length options available

OVERSIZED SURCHARGE +\$5 PER SIZE

AF COMPRESSION BOTTOMS

XS-2XL, OVERSIZE 3XL

MID-RISE BRIEF	SIZE	PRICE
UITS72W (W)	XS-2XL	\$51.50

- Compression brief with covered elastic waistband
- Mid-Rise construction for premium coverage and comfort
- Lined interior gusset

TRACK LEGGING	SIZE	PRICE
UJTLCTW (W)	XS-2XL	\$96.00

COMPRESSION SHORT	SIZE	PRICE
UITSCTW (W)	XS-2XL	\$80.50

- Signature HeatGear® fabrication with 4-way stretch
- Legging has drawcord at waist and zipper closure at ankle
- Short has 4" inseam

OVERSIZED SURCHARGE +\$5 PER SIZE
 SUBLIMATED PANEL ON FRONT BELOW KNEE ON LEGGING AND ABOVE KNEE ON SHORT.
 REST OF GARMENT IS DYED IN ONE OF THE FOLLOWING COLORS:

BLK GPH MDN RED RYL



BACK VIEW

STRAIGHTAWAY

DESIGN: LAST SEASON OFFERED
 IN PRIMETIME

FITTED SINGLET WITH
 TRACK LEGGING



ARMOURFUSE® UNIFORMS // ORDERING INFORMATION AND CUSTOMER SERVICE: 1-888-871-0990 // www.underarmourteamuniforms.com

FILL-IN LIFECYCLE TIMING FOUND ON PAGE 97. DECORATION OPTIONS AND ORDERING INFORMATION ARE AVAILABLE ON PAGES 90-97.



STRAIGHTAWAY

DESIGN: LAST SEASON OFFERED
IN PRIMETIME

COMPRESSION SINGLET WITH
COMPRESSION SHORT



STRAIGHTAWAY

DESIGN: LAST SEASON OFFERED
IN PRIMETIME

FITTED SINGLET WITH
SPLIT SHORT



AF PRIMETIME TOPS

XS-2XL, OVERSIZE 3XL

COMPRESSION SINGLET	SIZE	PRICE
UJTJC3W (W)	XS-2XL	\$93.00
FITTED SINGLET		
UJTJF4W (W)	XS-2XL	\$93.00

- Smooth, lightweight knit fabric for superior performance
- UA engineered mesh with Microthread Technology deliver true breathability in a light, durable, fast-drying fabric
- Athletic racerback design unlocks mobility

OVERSIZED SURCHARGE +\$5 PER SIZE

AF LOOSE BOTTOMS

XS-2XL, OVERSIZE 3XL, YXS-YXL

SPLIT SHORT 2.0	SIZE	PRICE
UITSW3W (W)	XS-2XL	\$93.00
SPLIT SHORT		
UITSPPW (W)	XS-2XL	\$70.50
UITSPPY (Y)	YXS-YXL	\$65.00

- Updated streamlined fit

SPLIT SHORT	SIZE	PRICE
UITSPPW (W)	XS-2XL	\$70.50
UITSPPY (Y)	YXS-YXL	\$65.00

- Ultra lightweight and durable sublimated woven fabric with internal liner
- 2 ½" inseam

4" SHORT 2.0	SIZE	PRICE
UITSW2W (M)	XS-2XL	\$98.00

- Updated streamlined fit

4" SHORT	SIZE	PRICE
UITS2W (W)	XS-2XL	\$80.50

- Ultra lightweight and durable sublimated woven fabric
- 4" Inseam
- +1, -1" inseam length options available

OVERSIZED SURCHARGE +\$5 PER SIZE

AF COMPRESSION BOTTOMS

XS-2XL, OVERSIZE 3XL

MID-RISE BRIEF	SIZE	PRICE
UITS72W (W)	XS-2XL	\$51.50

- Compression brief with covered elastic waistband
- Mid-Rise construction for premium coverage and comfort
- Lined interior gusset

TRACK LEGGING	SIZE	PRICE
UITLC1W (W)	XS-2XL	\$96.00

COMPRESSION SHORT	SIZE	PRICE
UITSC1W (W)	XS-2XL	\$80.50

- Signature HeatGear® fabrication with 4-way stretch
- Legging has drawcord at waist and zipper closure at ankle
- Short has 4" inseam

OVERSIZED SURCHARGE +\$5 PER SIZE
 SUBLIMATED PANEL ON FRONT BELOW KNEE ON LEGGING AND ABOVE KNEE ON SHORT.
 REST OF GARMENT IS DYED IN ONE OF THE FOLLOWING COLORS:

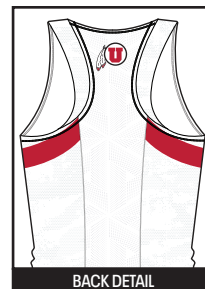
BLK GPH MDN RED RYL



SLEEK BREAK

DESIGN: LAST SEASON OFFERED IN PRIMETIME

COMPRESSION SINGLET WITH TRACK LEGGING



BACK DETAIL

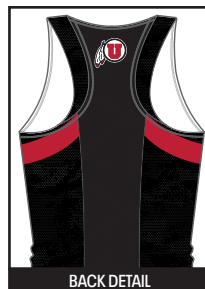




SLEEK BREAK

DESIGN: LAST SEASON OFFERED
IN PRIMETIME

COMPRESSION SINGLET WITH
SPLIT SHORT



BACK DETAIL

SLEEK BREAK

DESIGN: LAST SEASON OFFERED
IN PRIMETIME

FITTED SINGLET WITH
COMPRESSION SHORT



BACK DETAIL

AF PRIMETIME TOPS

XS-2XL, OVERSIZE 3XL

COMPRESSION SINGLET	SIZE	PRICE
UJTJC3W (W)	XS-2XL	\$93.00

FITTED SINGLET	SIZE	PRICE
UJTJF4W (W)	XS-2XL	\$93.00

- Smooth, lightweight knit fabric for superior performance
- UA engineered mesh with Microthread Technology deliver true breathability in a light, durable, fast-drying fabric
- Athletic racerback design unlocks mobility

OVERSIZED SURCHARGE +\$5 PER SIZE

AF LOOSE BOTTOMS

XS-2XL, OVERSIZE 3XL, YXS-YXL

SPLIT SHORT 2.0	SIZE	PRICE
UITSW3W (W)	XS-2XL	\$93.00

- Updated streamlined fit

SPLIT SHORT	SIZE	PRICE
UITSSPW (W)	XS-2XL	\$70.50
UITSSPY (Y)	YXS-YXL	\$65.00

- Ultra lightweight and durable sublimated woven fabric with internal liner
- 2 ½" inseam

4" SHORT 2.0	SIZE	PRICE
UITSW2W (M)	XS-2XL	\$98.00

- Updated streamlined fit

4" SHORT	SIZE	PRICE
UITSS2W (W)	XS-2XL	\$80.50

- Ultra lightweight and durable sublimated woven fabric
- 4" Inseam
- +1, -1" inseam length options available

OVERSIZED SURCHARGE +\$5 PER SIZE

AF COMPRESSION BOTTOMS

XS-2XL, OVERSIZE 3XL

MID-RISE BRIEF	SIZE	PRICE
UITSS72W (W)	XS-2XL	\$51.50

- Compression brief with covered elastic waistband
- Mid-Rise construction for premium coverage and comfort
- Lined interior gusset

TRACK LEGGING	SIZE	PRICE
UITLC1W (W)	XS-2XL	\$96.00

COMPRESSION SHORT	SIZE	PRICE
UITSC1W (W)	XS-2XL	\$80.50

- Signature HeatGear® fabrication with 4-way stretch
- Legging has drawcord at waist and zipper closure at ankle
- Short has 4" inseam

OVERSIZED SURCHARGE +\$5 PER SIZE
 SUBLIMATED PANEL ON FRONT BELOW KNEE ON LEGGING AND ABOVE KNEE ON SHORT.
 REST OF GARMENT IS DYED IN ONE OF THE FOLLOWING COLORS:

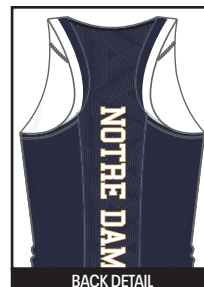
BLK GPH MDN RED RYL



RACEWAY

DESIGN: LAST SEASON OFFERED
 IN PRIMETIME

COMPRESSION SINGLET WITH
 TRACK LEGGING



BACK DETAIL





RACEWAY

DESIGN: LAST SEASON OFFERED
IN PRIMETIME

COMPRESSION SINGLET WITH
SPLIT SHORT



BACK DETAIL



RACEWAY

DESIGN: LAST SEASON OFFERED
IN PRIMETIME

FITTED SINGLET WITH
COMPRESSION SHORT



BACK DETAIL

AF PRIMETIME TOPS

XS-2XL, OVERSIZE 3XL

COMPRESSION SINGLET	SIZE	PRICE
UJTJC3W (W)	XS-2XL	\$93.00

FITTED SINGLET	SIZE	PRICE
UJTJF4W (W)	XS-2XL	\$93.00

- Smooth, lightweight knit fabric for superior performance
- UA engineered mesh with Microthread Technology deliver true breathability in a light, durable, fast-drying fabric
- Athletic racerback design unlocks mobility

OVERSIZED SURCHARGE +\$5 PER SIZE

AF LOOSE BOTTOMS

XS-2XL, OVERSIZE 3XL, YXS-YXL

SPLIT SHORT 2.0	SIZE	PRICE
UITSW3W (W)	XS-2XL	\$93.00

- Updated streamlined fit

SPLIT SHORT	SIZE	PRICE
UJTSSPW (W)	XS-2XL	\$70.50
UJTSSPY (Y)	YXS-YXL	\$65.00

- Ultra lightweight and durable sublimated woven fabric with internal liner
- 2 ½" inseam

4" SHORT 2.0	SIZE	PRICE
UITSW2W (M)	XS-2XL	\$98.00

- Updated streamlined fit

4" SHORT	SIZE	PRICE
UITS2W (W)	XS-2XL	\$80.50

- Ultra lightweight and durable sublimated woven fabric
- 4" Inseam
- +1, -1" inseam length options available

OVERSIZED SURCHARGE +\$5 PER SIZE

AF COMPRESSION BOTTOMS

XS-2XL, OVERSIZE 3XL

MID-RISE BRIEF	SIZE	PRICE
UITS72W (W)	XS-2XL	\$51.50

- Compression brief with covered elastic waistband
- Mid-Rise construction for premium coverage and comfort
- Lined interior gusset

TRACK LEGGING	SIZE	PRICE
UJTLCTW (W)	XS-2XL	\$96.00

COMPRESSION SHORT	SIZE	PRICE
UJTSC1W (W)	XS-2XL	\$80.50

- Signature HeatGear® fabrication with 4-way stretch
- Legging has drawcord at waist and zipper closure at ankle
- Short has 4" inseam

OVERSIZED SURCHARGE +\$5 PER SIZE
 SUBLIMATED PANEL ON FRONT BELOW KNEE ON LEGGING AND ABOVE KNEE ON SHORT.
 REST OF GARMENT IS DYED IN ONE OF THE FOLLOWING COLORS:

BLK GPH MDN RED RYL



FLEETACY

DESIGN: LAST SEASON OFFERED
 IN PRIMETIME

FITTED SINGLET WITH 4" SHORT





FLEETACY

DESIGN: LAST SEASON OFFERED
IN PRIMETIME

COMPRESSION SINGLET WITH
SPLIT SHORT



FLEETACY

DESIGN: LAST SEASON OFFERED
IN PRIMETIME

FITTED SINGLET WITH
COMPRESSION SHORT

AF PRIMETIME TOPS

XS-2XL, OVERSIZE 3XL

COMPRESSION SINGLET	SIZE	PRICE
UJTJC3W (W)	XS-2XL	\$93.00

FITTED SINGLET	SIZE	PRICE
UJTJF4W (W)	XS-2XL	\$93.00

- Smooth, lightweight knit fabric for superior performance
- UA engineered mesh with Microthread Technology deliver true breathability in a light, durable, fast-drying fabric
- Athletic racerback design unlocks mobility

OVERSIZED SURCHARGE +\$5 PER SIZE

AF LOOSE BOTTOMS

XS-2XL, OVERSIZE 3XL, YXS-YXL

SPLIT SHORT 2.0	SIZE	PRICE
UITSW3W (W)	XS-2XL	\$93.00

- Updated streamlined fit

SPLIT SHORT	SIZE	PRICE
UITSPPW (W)	XS-2XL	\$70.50
UITSSPY (Y)	YXS-YXL	\$65.00

- Ultra lightweight and durable sublimated woven fabric with internal liner
- 2 ½" inseam

4" SHORT 2.0	SIZE	PRICE
UITSW2W (M)	XS-2XL	\$98.00

- Updated streamlined fit

4" SHORT	SIZE	PRICE
UITS2W (W)	XS-2XL	\$80.50

- Ultra lightweight and durable sublimated woven fabric
- 4" Inseam
- +1, -1" inseam length options available

OVERSIZED SURCHARGE +\$5 PER SIZE

AF COMPRESSION BOTTOMS

XS-2XL, OVERSIZE 3XL

MID-RISE BRIEF	SIZE	PRICE
UITS72W (W)	XS-2XL	\$51.50

- Compression brief with covered elastic waistband
- Mid-Rise construction for premium coverage and comfort
- Lined interior gusset

TRACK LEGGING	SIZE	PRICE
UITLC1W (W)	XS-2XL	\$96.00

COMPRESSION SHORT	SIZE	PRICE
UITSC1W (W)	XS-2XL	\$80.50

- Signature HeatGear® fabrication with 4-way stretch
- Legging has drawcord at waist and zipper closure at ankle
- Short has 4" inseam

OVERSIZED SURCHARGE +\$5 PER SIZE
 SUBLIMATED PANEL ON FRONT BELOW KNEE ON LEGGING AND ABOVE KNEE ON SHORT.
 REST OF GARMENT IS DYED IN ONE OF THE FOLLOWING COLORS:

BLK GPH MDN **RED** RYL



HYPER LAUNCH

DESIGN: LAST SEASON OFFERED
 IN PRIMETIME

FITTED SINGLET WITH 4" SHORT





HYPER LAUNCH

DESIGN: LAST SEASON OFFERED
IN PRIMETIME

COMPRESSION SINGLET WITH
SPLIT SHORT



HYPER LAUNCH

DESIGN: LAST SEASON OFFERED
IN PRIMETIME

FITTED SINGLET WITH
COMPRESSION SHORT





AF SHOWTIME 2 TOPS

XS-2XL, OVERSIZE 3XL, YSM-YXL

COMPRESSION SINGLET	SIZE	PRICE
UTJCSW (W)	XS-2XL	\$82.50

- Signature lightweight 4-way stretch flat knit front with stretch mesh back

FITTED SINGLET	SIZE	PRICE
UTJFSW (W)	XS-2XL	\$82.50
UTJFSY (Y)	YSM-YXL	\$67.00

- Signature lightweight 4-way stretch knit HeatGear® fabrication with maximum breathability
- Scoop neck tank with racerback

LOOSE SHORTSLEEVE	SIZE	PRICE
UTJLSW (W)	XS-2XL	\$82.50

ADDITIONAL LENGTH OPTIONS FOUND ON PAGE 95
OVERSIZED SURCHARGE +\$5 PER SIZE

AF LOOSE BOTTOMS

XS-2XL, OVERSIZE 3XL, YXS-YXL

SPLIT SHORT	SIZE	PRICE
UTSSPW (W)	XS-2XL	\$70.50
UTSSPY (Y)	YXS-YXL	\$65.00

- Ultra lightweight and durable sublimated woven fabric with internal liner
- 2 1/2" inseam

4" SHORT	SIZE	PRICE
UTS2W (W)	XS-2XL	\$80.50

- Ultra lightweight and durable sublimated woven fabric
- 4" Inseam
- +1, -1" inseam length options available

OVERSIZED SURCHARGE +\$5 PER SIZE

AF COMPRESSION BOTTOMS

XS-2XL, OVERSIZE 3XL

TRACK LEGGING	SIZE	PRICE
UTLC1W (W)	XS-2XL	\$96.00

COMPRESSION SHORT	SIZE	PRICE
UTSC1W (W)	XS-2XL	\$80.50

- Signature HeatGear® fabrication with 4-way stretch
- Legging has drawcord at waist and zipper closure at ankle
- Short has 4" inseam

OVERSIZED SURCHARGE +\$5 PER SIZE
SUBLIMATED PANEL ON FRONT BELOW KNEE ON LEGGING AND ABOVE KNEE ON SHORT.
REST OF GARMENT IS DYED IN ONE OF THE FOLLOWING COLORS:

BLK GPH MDN RED RYL



BACK VIEW

ACCELERATE

COMPRESSION SINGLET WITH
TRACK LEGGING





ACCELERATE

LOOSE SHORTSLEEVE WITH
SPLIT SHORT



BACK DETAIL

ACCELERATE

FITTED SINGLET WITH
COMPRESSION SHORT



BACK DETAIL

AF SHOWTIME 2 TOPS

XS-2XL, OVERSIZE 3XL, YSM-YXL

COMPRESSION SINGLET	SIZE	PRICE
UTJCSW (W)	XS-2XL	\$82.50

- Signature lightweight 4-way stretch flat knit front with stretch mesh back

FITTED SINGLET	SIZE	PRICE
UTJFSW (W)	XS-2XL	\$82.50
UTJFSY (Y)	YSM-YXL	\$67.00

- Signature lightweight 4-way stretch knit HeatGear® fabrication with maximum breathability
- Scoop neck tank with racerback

LOOSE SHORTSLEEVE	SIZE	PRICE
UTJLSW (W)	XS-2XL	\$82.50

ADDITIONAL LENGTH OPTIONS FOUND ON PAGE 95
OVERSIZED SURCHARGE +\$5 PER SIZE



AF LOOSE BOTTOMS

XS-2XL, OVERSIZE 3XL, YXS-YXL

SPLIT SHORT	SIZE	PRICE
UTSSPW (W)	XS-2XL	\$70.50
UTSSPY (Y)	YXS-YXL	\$65.00

- Ultra lightweight and durable sublimated woven fabric with internal liner
- 2 1/2" inseam

4" SHORT	SIZE	PRICE
UTS2W (W)	XS-2XL	\$80.50

- Ultra lightweight and durable sublimated woven fabric
- 4" Inseam
- +1, -1" inseam length options available

OVERSIZED SURCHARGE +\$5 PER SIZE

AF COMPRESSION BOTTOMS

XS-2XL, OVERSIZE 3XL

TRACK LEGGING	SIZE	PRICE
UTLC1W (W)	XS-2XL	\$96.00

COMPRESSION SHORT	SIZE	PRICE
UTSC1W (W)	XS-2XL	\$80.50

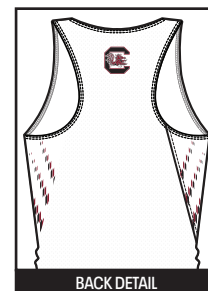
- Signature HeatGear® fabrication with 4-way stretch
- Legging has drawcord at waist and zipper closure at ankle
- Short has 4" inseam

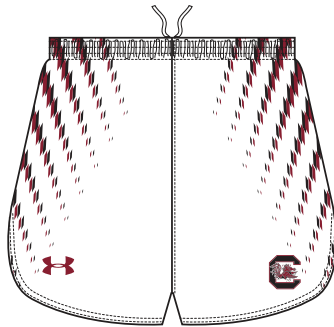
OVERSIZED SURCHARGE +\$5 PER SIZE
SUBLIMATED PANEL ON FRONT BELOW KNEE ON LEGGING AND ABOVE KNEE ON SHORT.
REST OF GARMENT IS DYED IN ONE OF THE FOLLOWING COLORS:

BLK GPH MDN RED RYL

BOLT

COMPRESSION SINGLET WITH TRACK LEGGING





BOLT

LOOSE SHORTSLEEVE WITH
SPLIT SHORT

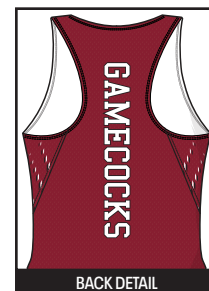


BACK DETAIL



BOLT

FITTED SINGLET WITH
COMPRESSION SHORT



BACK DETAIL

AF SHOWTIME 2 TOPS

XS-2XL, OVERSIZE 3XL, YSM-YXL

COMPRESSION SINGLET	SIZE	PRICE
UTJCSW (W)	XS-2XL	\$82.50

- Signature lightweight 4-way stretch flat knit front with stretch mesh back

FITTED SINGLET	SIZE	PRICE
UTJFSW (W)	XS-2XL	\$82.50
UTJFSY (Y)	YSM-YXL	\$67.00

- Signature lightweight 4-way stretch knit HeatGear® fabrication with maximum breathability
- Scoop neck tank with racerback

LOOSE SHORTSLEEVE	SIZE	PRICE
UTJLSW (W)	XS-2XL	\$82.50

ADDITIONAL LENGTH OPTIONS FOUND ON PAGE 95
OVERSIZED SURCHARGE +\$5 PER SIZE

AF LOOSE BOTTOMS

XS-2XL, OVERSIZE 3XL, YXS-YXL

SPLIT SHORT	SIZE	PRICE
UTSSPW (W)	XS-2XL	\$70.50
UTSSPY (Y)	YXS-YXL	\$65.00

- Ultra lightweight and durable sublimated woven fabric with internal liner
- 2 1/2" inseam

4" SHORT	SIZE	PRICE
UTS2W (W)	XS-2XL	\$80.50

- Ultra lightweight and durable sublimated woven fabric
- 4" Inseam
- +1, -1" inseam length options available

OVERSIZED SURCHARGE +\$5 PER SIZE

AF COMPRESSION BOTTOMS

XS-2XL, OVERSIZE 3XL

TRACK LEGGING	SIZE	PRICE
UTLC1W (W)	XS-2XL	\$96.00

COMPRESSION SHORT	SIZE	PRICE
UTSC1W (W)	XS-2XL	\$80.50

- Signature HeatGear® fabrication with 4-way stretch
- Legging has drawcord at waist and zipper closure at ankle
- Short has 4" inseam

OVERSIZED SURCHARGE +\$5 PER SIZE
SUBLIMATED PANEL ON FRONT BELOW KNEE ON LEGGING AND ABOVE KNEE ON SHORT.
REST OF GARMENT IS DYED IN ONE OF THE FOLLOWING COLORS:

BLK GPH MDN RED RYL

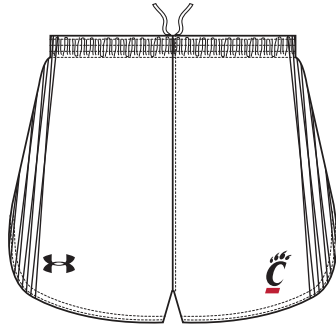
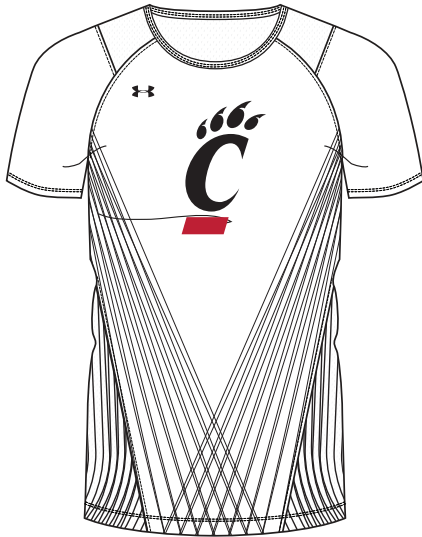


STRAIGHTAWAY

COMPRESSION SINGLET WITH
TRACK LEGGING

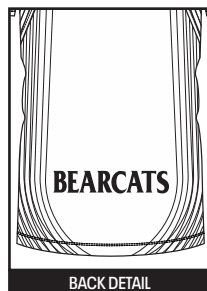


BACK DETAIL



STRAIGHTAWAY

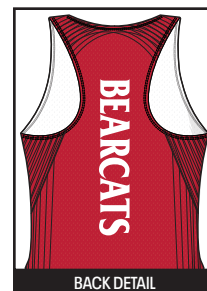
LOOSE SHORTSLEEVE WITH
SPLIT SHORT



BACK DETAIL

STRAIGHTAWAY

FITTED SINGLET WITH
COMPRESSION SHORT



BACK DETAIL

ST PACE SINGLET

FIRST SHIP: C/O // XS-2XL, YXS-YXL

STYLE	SIZE	PACKAGE	PRICE
UTJ200W (W)	SM-2XL	BLANK	\$47.50
		1-COLOR SCREEN	\$53.00
		2-COLOR SCREEN	\$58.00
UTJ200Y (Y)	YXS-YXL	BLANK	\$42.50

- Smooth, lightweight knit fabric for superior performance (main body from prime time top)
- Singlets: Athletic racerback design
- New fitted sizing composition will accommodate a wide variety of body types
- Team Gear Color blocking with contrasting inserts

*PACKAGE INCLUDES TEAM NAME/LOGO ONLY



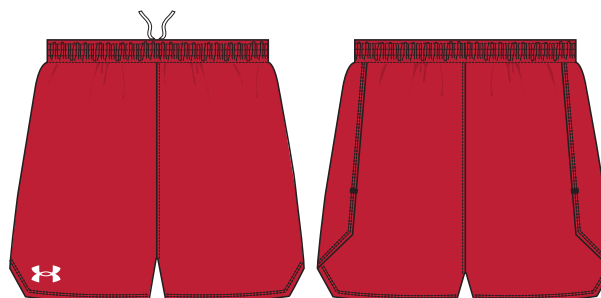
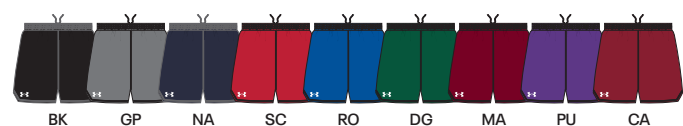
ST PACE SPLIT SHORT

FIRST SHIP: C/O // XS-2XL

STYLE	SIZE	PACKAGE	PRICE
UTS605W (W)	XS-2XL	BLANK	\$47.50
		1-COLOR SCREEN	\$53.00
		2-COLOR SCREEN	\$58.00

- Ultra lightweight and durable sublimated woven fabric
- Fitted construction and updated angular hem with bartack security
- Forward side seam placement to align uniform color blocking
- Inner brief
- 2.5" Inseam

*PACKAGE INCLUDES TEAM NAME/LOGO ONLY



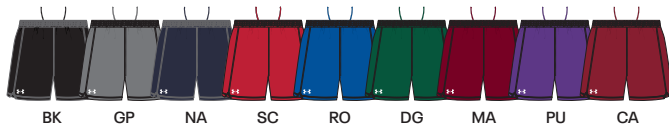
ST PACE 4" SHORT

FIRST SHIP: C/O // XS-2XL

STYLE	SIZE	PACKAGE	PRICE
UTS600W (W)	XS-2XL	BLANK	\$47.50
		1-COLOR SCREEN	\$53.00
		2-COLOR SCREEN	\$58.00

- Ultra Lightweight and durable woven fabric
- Fitted construction and updated angular hem with bartack security
- Forward side seam placement to align uniform color blocking
- 4" inseam

*PACKAGE INCLUDES TEAM NAME/LOGO ONLY



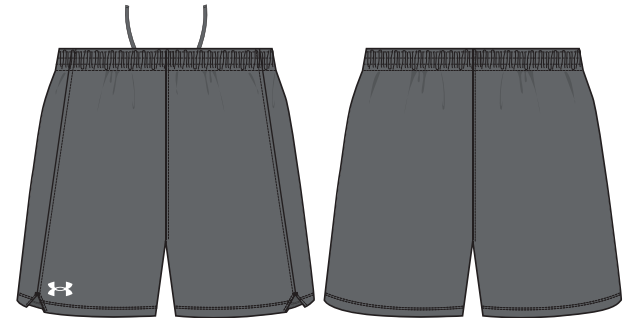
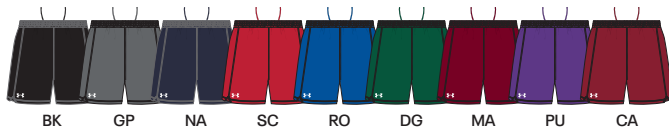
ST YOUTH PACE 5" SHORT

FIRST SHIP: C/O // YXS-YXL

STYLE	SIZE	PACKAGE	PRICE
UTS600Y (Y)	YXS-YXL	BLANK	\$42.50
		1-COLOR SCREEN	\$48.00
		2-COLOR SCREEN	\$53.00

- Ultra Lightweight and durable woven fabric
- Fitted construction and updated angular hem with bartack security
- Forward side seam placement to align uniform color blocking
- 5" inseam

*PACKAGE INCLUDES TEAM NAME/LOGO ONLY



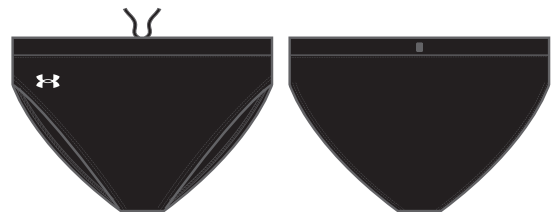
ST PACE BRIEF

FIRST SHIP: C/O // XS-2XL

STYLE	SIZE	PACKAGE	PRICE
UTS64W (W)	XS-2XL	BLANK	\$32.00
		1-COLOR SCREEN	\$37.50
		2-COLOR SCREEN	\$42.50

- Compression brief with covered elastic waist band with built in drawcord
- Lined Interior Gusset
- Updated garment construction to match her style

*PACKAGE INCLUDES TEAM NAME/LOGO ONLY



KICK SINGLET

XS-2XL

STYLE	SIZE	PACKAGE	PRICE
UTJ196W (W)	XS-2XL	BLANK	\$33.00
		1-COLOR SCREEN	\$38.50
		2-COLOR SCREEN	\$43.50

- Signature moisture transport system wicks sweat to keep you dry and light
- Stretch mesh fabric for mobility, breathability, and comfort
- Athletic colorblocked side insets

*PACKAGE INCLUDES TEAM NAME/LOGO ONLY



BK/WH WH/WH GP/WH NA/WH SC/WH RO/WH DG/WH MA/WH

KICK SPLIT SHORT

XS-2XL

STYLE	SIZE	PACKAGE	PRICE
UTS596W (W)	XS-2XL	BLANK	\$33.00
		1-COLOR SCREEN	\$38.50
		2-COLOR SCREEN	\$43.50

- Ultra lightweight woven fabric yet still extremely durable
- Internal liner helps moisture escape & adds breathability
- Covered elastic waistband with internal drawcord and liner
- 2 1/2" inseam

*PACKAGE INCLUDES TEAM NAME/LOGO ONLY



BK GP NA SC RO DG MA

UA TEAM SHORTY

XS-2XL

STYLE	SIZE	SIZE	PRICE
1351244 (W)	XS-2XL	3"	\$30.00
1351243 (W)	XS-2XL	4"	\$30.00



BLK/WHT MDN/WHT RED/WHT RYL/WHT



GRN/WHT MAR/WHT PUR/WHT CRD/WHT



KICK SINGLET

XS-2XL

STYLE	SIZE	PACKAGE	PRICE
UTJ196W (W)	XS-2XL	BLANK	\$33.00
		1-COLOR SCREEN	\$38.50
		2-COLOR SCREEN	\$43.50

- Signature moisture transport system wicks sweat to keep you dry and light
- Stretch mesh fabric for mobility, breathability, and comfort
- Athletic colorblocked side insets

*PACKAGE INCLUDES TEAM NAME/LOGO ONLY



KICK 4" SHORT

XS-2XL

STYLE	SIZE	PACKAGE	PRICE
UTS585W (W)	XS-2XL	BLANK	\$38.00
		1-COLOR SCREEN	\$43.50
		2-COLOR SCREEN	\$48.50

- Ultra lightweight woven fabric yet still extremely durable
- Covered elastic waistband with internal drawcord and liner
- 4" inseam

*PACKAGE INCLUDES TEAM NAME/LOGO ONLY



KICK SPRINT BRIEF

XS-2XL

STYLE	SIZE	PACKAGE	PRICE
UTS588W (W)	XS-2XL	BLANK	\$38.00

- Compression brief with covered elastic waist and built-in drawcord
- Lined interior gusset
- Available only in Black and Midnight Navy

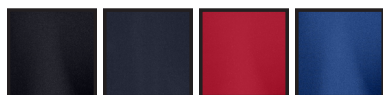


1370902**UA FLY FAST 3.0 HALF TIGHT****\$45.00 | FITTED | XS-XL****FIRST SHIP: C/O**

- Super-light, fast-drying fabric delivers superior coverage without weighing you down
- Material wicks sweat & dries quickly
- 4-way stretch material moves better in every direction
- Side drop-in pocket
- Mesh side panels for added breathability
- High-Rise Waistband with interior drawcord for coverage and a perfect stay-put fit
- Scent-Control tech that neutralizes odors with a finish that's free of heavy metals

77% POLYESTER, 23% ELASTANE002
BLK**1351243****UA TEAM SHORTY 4"****\$30.00 | COMPRESSION | XS-2XL****YOUTH: 1363501 | \$25.00 | YXS-YXL****FIRST SHIP: C/O**

- Super-light HeatGear® fabric delivers superior coverage without weighing you down
- Material wicks sweat & dries really fast
- 4-way stretch construction moves better in every direction
- Anti-odor technology prevents the growth of odor-causing microbes
- Stretchy elastic waistband with interior wordmark wrap
- Inseam: 4"
- Heatseal Logo

87% POLYESTER, 13% ELASTANE**heatgear™** Y = YOUTH OFFERING001 Y 410 Y 600 400
BLK/WHT MDN/WHT RED/WHT RYL/WHT301 609 500 625
GRN/WHT MAR/WHT PUR/WHT CRD/WHT

1379600 CHALLENGER TRAINING JACKET

\$65.00 | **FITTED** | XS-XL

YOUTH: 1379707 | \$60.00 | YXS-YXL

FIRST SHIP: C/O

- Durable knit fabric is light, tough & breathable
- Bomber-inspired cuffs, collar & hem
- Fast-drying, wicking, & lightweight fabric for superior performance
- Fitted, with updated design lines

100% POLYESTER

Y = YOUTH OFFERING



001Y
BLK



1379598 CHALLENGER TRAINING PANT

\$55.00 | **FITTED** | XS-XL

YOUTH: 1379709 | \$50.00 | YXS-YXL

FIRST SHIP: C/O

- 4-way stretch fabrication allows for greater mobility in any direction
- Fast-drying, wicking, & lightweight fabric for superior performance
- Encased elastic waistband with internal drawcord
- Bottom ankle zippers for easy on/off during training
- Fitted, with updated design lines and a tapered leg

100% POLYESTER

Y = YOUTH OFFERING



001Y
BLK



410
MDN



NEW

3027959

UA SHAKEDOWN ELITE BRZ

\$150.00 | SIZES: 3.5-13

FIRST SHIP: C/O // LAST SHIP: 6/19/2024

MID DISTANCE: 1500M - 10K

- New stiffer plate compound for more propulsion, energy return and quicker transitions.
- Open mesh textile that is lightweight and breathable.
- HEEL CONSTRUCTION: Reductive design approach eliminates layers while maintaining lockdown properties and support.
- SHARKSKIN HEEL: Singular, responsive and long-lasting technology that eliminates the rubber outsole.
- PEBAX FOAM: Lightweight foam that provides extremely soft landings with exceptional springy properties for great energy return.
- TPE SOCKLINER: Made from recycled materials that is more lightweight, helps evenly distribute pressure and provides a soft step-in feel.
- FULL LENGTH SPIKE PLATE: Lightweight plate with high strength and resiliency for a smooth transition and toe-off.



SPRINTS

3022516

UA SPRINT PRO 3

\$120.00 | SIZES: 3.5-13

FIRST SHIP: C/O

POWER SPRINTS

- EMBROIDERED UPPER: Every yarn considered. UA's embroidery technology creates a lightweight, comfortable upper that provides superior airflow and minimal, tuned support.
- STRUCTURAL FILM: A lightweight film in the forefoot that provides additional strength to maximize containment efficiency and power in propulsion.
- DIE-CUT SOCKLINER: Made of high-rebound foam for added cushioning and resiliency.
- THIN SYNTHETIC PU MICROFIBER: Microfiber to moderate between plate and upper.
- HIGH MODULUS MOLDED PEBA: Full-length LX90 plate for light weight, high strength, and resiliency. Built with 8 perimeter-focused pins for a smooth transition and toe-off.



SPRINTS

SPRINTS

3023397

UA HOVR MILER PRO 3

\$120.00 | SIZES: 3.5-13, 14, 15

FIRST SHIP: C/O

1500-3K

- EMBROIDERED UPPER: Every yarn considered. UA's embroidery technology creates a lightweight, comfortable upper that provides superior airflow and minimal, tuned support.
- DIE-CUT SOCKLINER: Made of high-rebound foam for added cushioning and resiliency.
- UA HOVR MIDSOLE: HOVR foam midsole attenuates impact forces and provides extra bounce at toe-off.
- SHARKSKIN TRACTION: Lightweight molded element in the heel enhances traction off the blocks.
- HIGH-MODULUS MOLDED PEBA: $\frac{3}{4}$ EX9200 Plate for lightweight, high-strength and resilience. Built with 6 pins that are primarily perimeter-focused for smooth transition at toe-off.



101
HALO/BLK

SPRINTS

3021831

UA SMOKERIDER

\$100.00 | SIZES: 3.5-13

FIRST SHIP: C/O

FINESSE SPRINTS

- EMBROIDERED UPPER: Every yarn considered. UA's embroidery technology creates a lightweight and comfortable upper that provides superior air-flow and minimal tuned support.
- STRUCTURAL FILM: A lightweight film in the forefoot that provides additional strength to maximize containment efficiency and power in propulsion.
- DIE-CUT SOCKLINER: Made of high-rebound foam for added cushioning and resiliency.
- SYNTHETIC PU MIDSOLE: Thin synthetic microfiber PU provides moderation between upper and plate.
- SHARKSKIN TRACTION: Lightweight molded element in the heel enhances traction off the blocks.
- HIGH MODULUS MOLDED PEBA: $\frac{3}{4}$ EX9200 plate for lightweight, high-strength, and resilience. Built with 6 pins that are primarily perimeter focused for smooth transition to toe-off.



004
BLK/MGD

SPRINTS

3025460

UA KICK DISTANCE 4

\$70.00 | SIZES: 3.5-12, 13

FIRST SHIP: C/O

DISTANCE

- **LIGHTWEIGHT MESH UPPER:** Creates a lightweight and comfortable upper that provides superior air-flow and minimal tuned support.
- **DIECUT SOCKLINER:** Made of high-rebound foam for added cushioning and resiliency.
- **RESPONSIVE MICRO G:** Soft Micro G foam combined with dynamic mesh Energy Web creates an incredible zero gravity feel + energy return.
- **DURABLE RUBBER:** A textured, cupped outsole surrounds the foot for added stability and the optimal amount of grip for a smooth and powerful rotation.
- **HIGH MODULUS MOLDED PEBA:** Half-length LX90 plate for light weight, high strength, and resiliency. Built with 4 perimeter-focused pins for a smooth transition and toe-off.



100
WHT/BLK/METALLIC TIN



300
HVY/BLK/BETA

SPRINTS

3025461

UA KICK SPRINT 4

\$70.00 | SIZES: 3.5-12, 13

FIRST SHIP: C/O

SPRINTS

- **SYNTHETIC MICROFIBER PU UPPER:** Provides secure lockdown and integrated breathability.
- **DIECUT SOCKLINER:** Made of high-rebound foam for added cushioning and resiliency.
- **UA MICRO G HIGH-REBOUND MIDSOLE:** A thin molded midsole that sits between the sockliner and plate to dampen impact and provide added energy return.
- **HIGH MODULUS MOLDED PEBA:** 3/4 length LX90 plate for light weight, high strength, and resiliency. Built with 6 perimeter-focused pins for a smooth transition and toe-off.



001
BLK/BETA/HVY



002
BLK/WHT/METALLIC TIN

THROWS

3021862 UA CENTRIC GRIP

\$90.00 | SIZES: 6.5-13, 14, 15, 16, 17, 18

FIRST SHIP: C/O

SHOT, DISCUSS

- EMBROIDERED UPPER: Every yarn considered. UA's embroidery technology creates a lightweight, comfortable upper that provides superior airflow and minimal, tuned support.
- UA HOVR CUSHIONING SYSTEM: Soft UA HOVR™ foam combined with dynamic mesh Energy Web creates an incredible zero gravity feel + energy return.
- RUBBER TOE BUMPER: Additional toe support for durability and protection.
- PEBAX PLATE: Structure and support in the midfoot for efficient foot-strike.
- DURABLE RUBBER: A textured, cupped outsole surrounds the foot for added stability and the optimal amount of grip for a smooth and powerful rotation.



003
BLK/MGD

3022517 UA HOVR SILENCER

\$110.00 | SIZES: 6.5-13, 14, 15, 16, 17, 18

FIRST SHIP: C/O

JAVELIN

- EMBROIDERED UPPER: Every yarn considered. UA's embroidery technology creates a lightweight, comfortable upper that provides superior airflow and minimal, tuned support.
- 3X POWER STRAP: A 3-point midfoot strap that harnesses the midfoot and forefoot.
- DIE-CUT SOCKLINER: Made of high-rebound foam for added cushioning and resiliency.
- UA HOVR CUSHIONING SYSTEM: Soft UA HOVR™ foam combined with dynamic mesh Energy Web creates an incredible zero gravity feel + energy return.
- PEBA MIDFOOT SHANK: Structure and support in the midfoot for efficient foot-strike.
- STRUCTURAL MIDSOLE RIM: Additional support midsole that encapsulates the HOVR foam to keep the foot centered and provide greater durability.
- HIGH MODULUS MOLDED PEBA: Full-length LX90 plate for light weight, high strength, and resiliency. Built with 10 perimeter-focused pins for a smooth transition and toe-off.



003
BLK/MGD

THROWS

JUMPS

3022518

UA SKYLINE HJ

\$110.00 | SIZES: 3.5-12, 13, 14

FIRST SHIP: C/O

HIGH JUMP

- EMBROIDERED UPPER: Every yarn considered. UA's embroidery technology creates a lightweight, comfortable upper that provides superior airflow and minimal, tuned support.
- 3X POWER STRAP: A 3 point midfoot strap. Harness Forefoot and Midfoot.
- UA HOVR CUSHIONING SYSTEM: Soft UA HOVR™ foam combined with dynamic mesh Energy Web creates an incredible zero gravity feel + energy return.
- STRUCTURAL MIDSOLE RIM: Additional support midsole that encapsulates the HOVR foam to the keep the foot centered and provide greater durability.
- HIGH MODULUS MOLDED PEBA: Full-length LX90 plate for light weight, high strength, and resiliency. Built with 11 perimeter-focused pins for a smooth transition and toe-off.



100
WHT/BLK/MGD

JUMPS

3021863

UA HOVR SKYLINE LJ

\$100.00 | SIZES: 3.5-12, 13

FIRST SHIP: C/O

LONG JUMP, POLE VAULT

- EMBROIDERED UPPER: Every yarn considered. UA's embroidery technology creates a lightweight, comfortable upper that provides superior airflow and minimal, tuned support.
- 3X POWER STRAP: A 3 point midfoot strap. Harness Forefoot and Midfoot.
- UA HOVR CUSHIONING SYSTEM: Soft UA HOVR™ foam combined with dynamic mesh Energy Web creates an incredible zero gravity feel + energy return.
- SHARKSKIN HEEL: Molded lightweight-traction in the heel and midfoot, provides low profile traction for secure planting and smooth transition.
- STRUCTURAL MIDSOLE RIM: Additional support midsole that encapsulates the HOVR foam to the keep the foot centered and provide greater durability.
- HIGH MODULUS MOLDED PEBA: Full-length LX90 plate for light weight, high strength, and resiliency. Built with 7 perimeter-focused pins for a smooth transition and toe-off.



102
WHT/BLK/MGD

3021864 UA SKYLINE TJ/PV

\$100.00 | SIZES: 3.5-12, 13

FIRST SHIP: C/O

TRIPLE JUMP, POLE VAULT

- EMBROIDERED UPPER: Every yarn considered. UA's embroidery technology creates a lightweight, comfortable upper that provides superior airflow and minimal, tuned support.
- 3X POWER STRAP: A 3 point midfoot strap. Harness Forefoot and Midfoot.
- UA HOVR CUSHIONING SYSTEM: Soft UA HOVR™ foam combined with dynamic mesh Energy Web creates an incredible zero gravity feel + energy return.
- SHARKSKIN HEEL: Molded lightweight-traction in the heel and midfoot, provides low profile traction for secure planting and smooth transition.
- STRUCTURAL MIDSOLE RIM: Additional support midsole that encapsulates the HOVR foam to the keep the foot centered and provide greater durability.
- HIGH MODULUS MOLDED PEBA: Full-length LX90 plate for light weight, high strength, and resiliency. Built with 7 perimeter-focused pins for a smooth transition and toe-off.



101
WHT/BLK/MGD

CROSS COUNTRY

3025462
UA BRIGADE XC LOW 2

\$70.00 | SIZES: 5-12, 13

FIRST SHIP: C/O

CROSS COUNTRY

- **LIGHTWEIGHT & BREATHABLE:** Mesh upper provides enhanced ventilation.
- **PEBAX™ PLATE:** Ultra strong, ultra-lightweight Pebax plate is strategically placed in the forefoot for explosive take-offs.
- **MICHELIN WILD GRIPPER OUTSOLE:** Rubber compound uses unique traction lugs for unmatched grip & traction on any terrain.
- **4 PIN:** Spike construction to keep you on your toes and provides the ultimate traction for rugged terrain.



001
BLK/HALO GRAY/HALO GRAY



002
BLK/BETA/BETA

CROSS COUNTRY

3025463
UA BRIGADE XC LOW 2 SPIKELESS

\$70.00 | SIZES: 5-12, 13

FIRST SHIP: C/O

CROSS COUNTRY

- **LIGHTWEIGHT & BREATHABLE:** Mesh upper provides enhanced ventilation.
- **PEBAX™ PLATE:** Ultra strong, ultra-lightweight Pebax plate is strategically placed in the forefoot for explosive take-offs.
- **MICHELIN WILD GRIPPER OUTSOLE:** Rubber compound uses unique traction lugs for unmatched grip & traction on any terrain.
- **ArchFit SYSTEM** locks in the arch for a precise fit and foot guidance.



001
BLK/HALO GRAY/HALO GRAY



002
BLK/BETA/BETA

[illegible]



Men's Armourfuse® Training gear is offered in customizable designs for tees, shorts, and baselayer. Available in compression and loose fits. Ideal for training days, travel, shooting shirts, tournaments, and game uniforms across all sports.

ARMOURFUSE

- Brilliant, vibrant team colors permanently fused directly into textiles
- Limitless customization, all-inclusive pricing with exclusive UA designs and customized prints
- 37 different colors and 16 prints available
- 6 piece minimum order

AF TRAINING HOODY

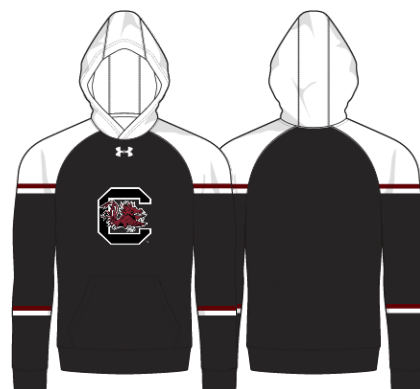
XS-2XL, OVERSIZE 3XL-4XL, YSM-YXL

HOODY	SIZE	PRICE
UJGSLHM (M)	XS-2XL	\$122.00
UJGSLHY (Y)	YSM-YXL	\$111.50

OVERSIZED SURCHARGE +\$5 PER SIZE
ADDITIONAL LENGTH OPTIONS FOUND ON PAGE 95



SPRINT



UA VITAL



UA ECLIPSE



SCOUT



AF LIGHTWEIGHT LONGSLEEVE HOODED SHOOTER

XS-2XL, OVERSIZE 3XL-4XL, YSM-YXL

HOODY	SIZE	PRICE
UJGTHLM (M)	XS-2XL	\$103.00
UJGTHLY (Y)	YSM-YXL	\$93.00

OVERSIZED SURCHARGE +\$5 PER SIZE
ADDITIONAL LENGTH OPTIONS FOUND ON PAGE 95



SPRINT

AF SHORTSLEEVE HOODED SHOOTER

SM-2XL, OVERSIZE 3XL-4XL, YSM-YXL

STYLE	SIZE	PRICE
UJKTHIM (M)	SM-2XL	\$91.00
UJGTHSY (Y)	YSM-YXL	\$82.50

OVERSIZED SURCHARGE +\$5 PER SIZE
ADDITIONAL LENGTH OPTIONS FOUND ON PAGE 95



SPRINT

AF LIGHTWEIGHT SLEEVELESS HOODED SHOOTER

XS-2XL, OVERSIZE 3XL-4XL

HOODY	SIZE	PRICE
UJGTHSM (M)	XS-2XL	\$88.00

OVERSIZED SURCHARGE +\$5 PER SIZE
ADDITIONAL LENGTH OPTIONS FOUND ON PAGE 95



SPRINT

AF SHORTSLEEVE ¼ ZIP

XS-2XL, OVERSIZE 3XL-4XL

¼ ZIP	SIZE	PRICE
UJGQZSM (M)	XS-2XL	\$98.00

OVERSIZED SURCHARGE +\$5 PER SIZE
ADDITIONAL LENGTH OPTIONS FOUND ON PAGE 95



SPRINT



UA VITAL



UA ECLIPSE



SCOUT



UA VITAL



UA ECLIPSE



SCOUT



UA VITAL



UA ECLIPSE



SCOUT



UA VITAL



UA ECLIPSE



SCOUT

AF TRAINING ¼ ZIP

XS-2XL, OVERSIZE 3XL-4XL

¼ ZIP	SIZE	PRICE
UJGQZPM (M)	XS-2XL	\$96.00

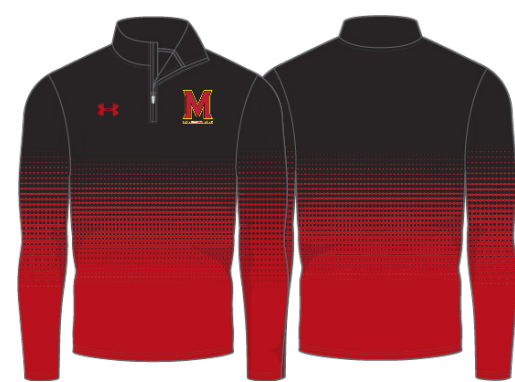
OVERSIZED SURCHARGE +\$5 PER SIZE
ADDITIONAL LENGTH OPTIONS FOUND ON PAGE 95



SPRINT



UA VITAL



UA ECLIPSE



SCOUT

AF TRAINING SS & LS T

XS-2XL, OVERSIZE 3XL-4XL,
YSM-YXL

LOOSE SS T	SIZE	PRICE
UJGSIM (M)	XS-2XL	\$60.00
UJGSY (Y)	YSM-YXL	\$55.00
LOOSE LS T	SIZE	PRICE
UJGLIM (M)	XS-2XL	\$65.00
UJGLY (Y)	YSM-YXL	\$60.00

OVERSIZED SURCHARGE +\$5 PER SIZE
ADDITIONAL LENGTH OPTIONS FOUND ON PAGE 95



SPRINT



UA VITAL



UA ECLIPSE



SCOUT





AF TRAINING SHORTS

XS-2XL, OVERSIZE 3XL-4XL, YSM-YXL

POCKETED SHORT	SIZE	PRICE
UJGS2PM (M)	XS-2XL	\$65.00
UJGS2PY (Y)	YSM-YXL	\$60.00

NON-POCKETED SHORT	SIZE	PRICE
UJGS2M (M)	XS-2XL	\$60.00
UJGS2Y (Y)	YSM-YXL	\$55.00

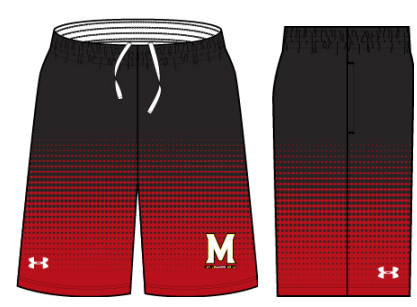
9" INSEAM FOR POCKETED AND NON-POCKETED SHORT
OVERSIZED SURCHARGE +\$5 PER SIZE
ADDITIONAL LENGTH OPTIONS FOUND ON PAGE 95



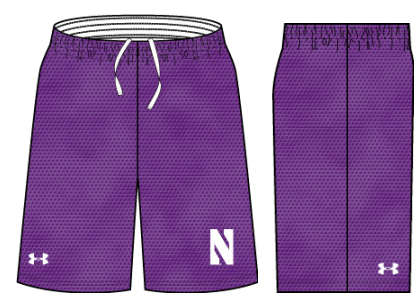
SPRINT



UA VITAL



UA ECLIPSE



SCOUT



AF TRAINING COMPRESSION SLEEVELESS

XS-2XL, OVERSIZE 3XL-4XL

COMPRESSION SLEEVELESS	SIZE	PRICE
UJGCB (M)	XS-2XL	\$65.00

OVERSIZED SURCHARGE +\$5 PER SIZE
ADDITIONAL LENGTH OPTIONS FOUND ON PAGE 95



UA VITAL



UA ECLIPSE



SCOUT



AF TRAINING COMPRESSION HALF SLEEVE

XS-2XL, OVERSIZE 3XL-4XL

COMPRESSION HALF SLEEVE	SIZE	PRICE
UJGHBL (M)	XS-2XL	\$70.50

OVERSIZED SURCHARGE +\$5 PER SIZE
ADDITIONAL LENGTH OPTIONS FOUND ON PAGE 95



UA VITAL

AF TRAINING COMPRESSION SHORTSLEEVE

XS-2XL, OVERSIZE 3XL-4XL

COMPRESSION SS	SIZE	PRICE
UJGTBL (M)	XS-2XL	\$65.00

OVERSIZED SURCHARGE +\$5 PER SIZE
ADDITIONAL LENGTH OPTIONS FOUND ON PAGE 95



UA ECLIPSE

AF TRAINING COMPRESSION LONGSLEEVE

XS-2XL, OVERSIZE 3XL-4XL

COMPRESSION LS	SIZE	PRICE
UJGCLS (M)	XS-2XL	\$75.50

OVERSIZED SURCHARGE +\$5 PER SIZE
ADDITIONAL LENGTH OPTIONS FOUND ON PAGE 95



SCOUT

SHORTSLEEVE

LONGSLEEVE



UA VITAL



UA VITAL



UA ECLIPSE



UA ECLIPSE



SCOUT



SCOUT



Women's Armourfuse® Training gear is offered in customizable designs for tees, shorts, and baselayer. Available in compression and loose fits. Ideal for training days, travel, shooting shirts, tournaments, and game uniforms across all sports.

ARMOURFUSE

- Brilliant, vibrant team colors permanently fused directly into textiles
- Limitless customization, all-inclusive pricing with exclusive UA designs and customized prints
- 37 different colors and 16 prints available
- 6 piece minimum order

AF TRAINING HOODY

XS-2XL, OVERSIZE 3XL, YSM-YXL

HOODY	SIZE	PRICE
UIGSLHW (W)	XS-2XL	\$122.00
UIGSLHY (Y)	YSM-YXL	\$111.50

OVERSIZED SURCHARGE +\$5 PER SIZE
ADDITIONAL LENGTH OPTIONS FOUND ON PAGE 95



SPRINT



UA VITAL



UA ECLIPSE



SCOUT

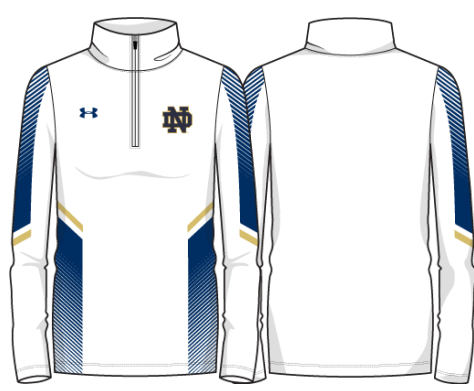


AF TRAINING ½ ZIP

XS-2XL, OVERSIZE 3XL

½ ZIP	SIZE	PRICE
UJGHZPW (W)	XS-2XL	\$96.00

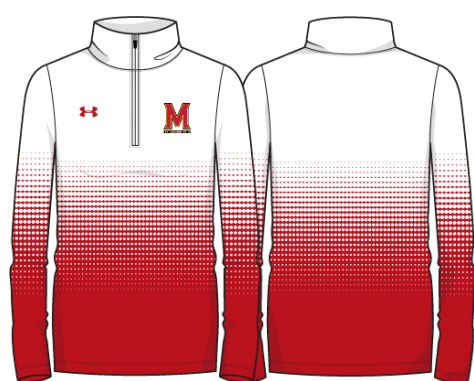
OVERSIZED SURCHARGE +\$5 PER SIZE
ADDITIONAL LENGTH OPTIONS FOUND ON PAGE 95



SPRINT



UA VITAL



UA ECLIPSE



SCOUT



SPRINT



SPRINT

AF TRAINING SS

XS-2XL, OVERSIZE 3XL, YSM-YXL

LOOSE SS T	SIZE	PRICE
UJGSIW (W)	XS-2XL	\$60.00
UJGSIY (Y)	YSM-YXL	\$55.00

OVERSIZED SURCHARGE +\$5 PER SIZE
ADDITIONAL LENGTH OPTIONS FOUND ON PAGE 95



UA VITAL



UA VITAL

AF SHORTSLEEVE HOODED SHOOTER

SM-2XL, OVERSIZE 3XL, YSM-YXL

STYLE	SIZE	PRICE
UJKTHW (W)	SM-2XL	\$91.00
UJGTHSY (Y)	YSM-YXL	\$82.50

OVERSIZED SURCHARGE +\$5 PER SIZE
ADDITIONAL LENGTH OPTIONS FOUND ON PAGE 95



UA ECLIPSE



UA ECLIPSE



SCOUT



SCOUT

AF TRAINING LS

XS-2XL, OVERSIZE 3XL, YSM-YXL

LOOSE LST	SIZE	PRICE
UJGLTW (W)	XS-2XL	\$65.00
UJGLTY (Y)	YSM-YXL	\$60.00

OVERSIZED SURCHARGE +\$5 PER SIZE
ADDITIONAL LENGTH OPTIONS FOUND ON PAGE 95



SPRINT



UA VITAL



UA ECLIPSE



SCOUT

AF TRAINING SHORTS

XS-2XL, OVERSIZE 3XL, YSM-YXL

POCKETED SHORT	SIZE	PRICE
UJGS2PW (W)	XS-2XL	\$65.00
UJGS2PY (Y)	YSM-YXL	\$60.00

NON-POCKETED SHORT	SIZE	PRICE
UJGS2W (W)	XS-2XL	\$60.00
UJGS2Y (Y)	YSM-YXL	\$55.00

HEADBAND	SIZE	PRICE
UJLHBW1 (W)	OSFA	\$34.00

5" INSEAM FOR POCKETED AND NON-POCKETED SHORT
OVERSIZED SURCHARGE +\$5 PER SIZE
ADDITIONAL LENGTH OPTIONS FOUND ON PAGE 95



SPRINT



UA VITAL



UA ECLIPSE



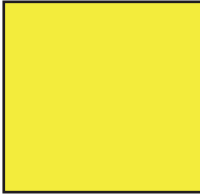
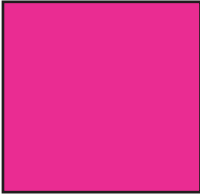
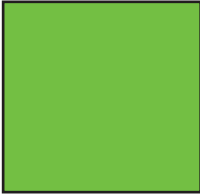
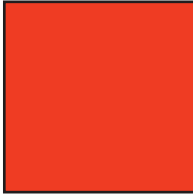
SCOUT



ARMOUR FUSE

					
WHITE	BLACK	MIDNIGHT NAVY	UNIVERSITY RED	ROYAL	FOREST GREEN
					
TEAM KELLY GREEN	MAROON	CARDINAL	DARK ORANGE	STEELTOWN GOLD	TEAM VEGAS GOLD
					
PURPLE	SILVER GRAY	GRAPHITE	CAROLINA BLUE	CLEVELAND BROWN	TEXAS ORANGE
					
COASTAL TEAL	PINK	POISON	CAPRI	TAXI	BASEBALL GRAY
					
OCEAN STORM	TENNESSEE ORANGE	GRAYSTONE	MIAMI TEAL	SEA GLASS	POWDER KEG BLUE
					
ELECTRIC BLUE	GOLD RUSH	TROPIC PINK	PITCH GRAY	VINTAGE WHITE	

FLUORESCENTS
NOT CURRENTLY AVAILABLE IN TONAL
PRINTS OR ON GAMEDAY SELECT PRODUCT

			
YELLOW FLUORESCENT	PINK FLUORESCENT	GREEN FLUORESCENT	ORANGE FLUORESCENT

HEATHER COLOR OFFERING

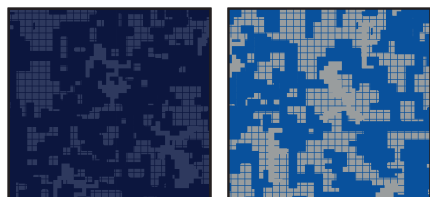
Offered exclusively on "Vital" and "Scout" Designs on ArmourFuse Training product (see pages 74-89)

Swatches available through your ArmourFuse business Customer Service Rep

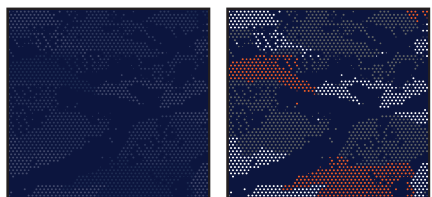


ARMOUR FUSE

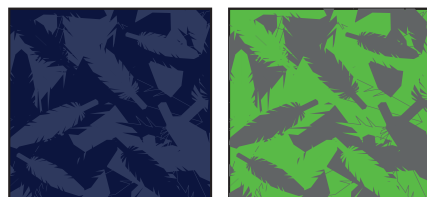
Prints available in all ArmourFuse colors. (Fluorescents not currently available in tonal prints)



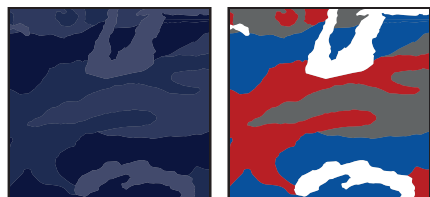
DIGITAL CAMO



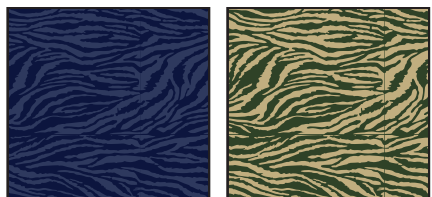
PIXEL CAMO



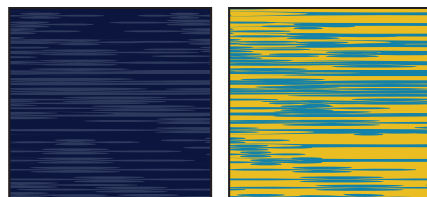
WINGS



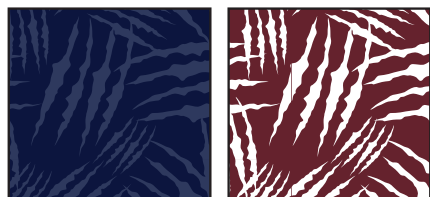
WOODLAND CAMO



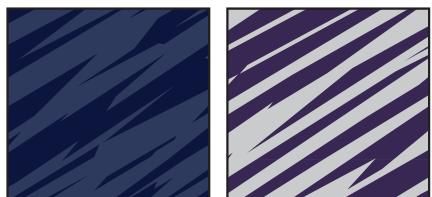
BENGAL



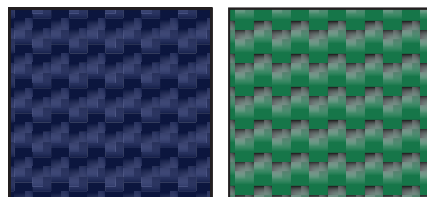
BLUR



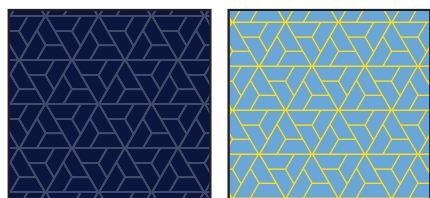
CLAW



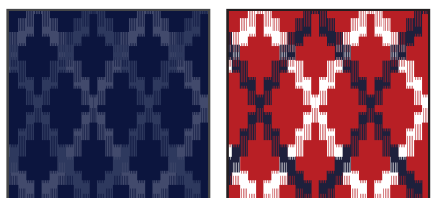
SPLINTER



CARBON WEAVE



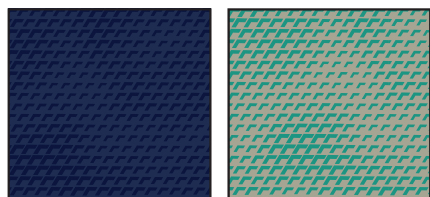
RAZOR



TOTEM

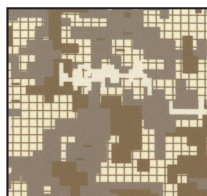


TREAD

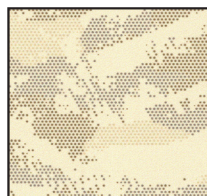


SCALE

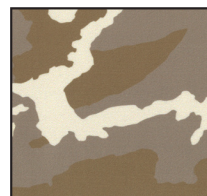
DESERT CAMO
LOCKED COLOR COMBINATIONS,
CANNOT BE ALTERED



DESERT
DIGITAL CAMO



DESERT
PIXEL CAMO



DESERT
WOODLAND CAMO

FONT OPTIONS

BADGER

ABCDEFGHIJKLMNOPQRSTUVWXYZ
0123456789

COMBINE

ABCDEFGHIJKLMNOPQRSTUVWXYZ
0123456789

BEARCAT

ABCDEFGHIJKLMNOPQRSTUVWXYZ
0123456789

CADET

ABCDEFGHIJKLMNOPQRSTUVWXYZ
0123456789

HIGHLIGHT

ABCDEFGHIJKLMNOPQRSTUVWXYZ
0123456789

TERRAFONT

ABCDEFGHIJKLMNOPQRSTUVWXYZ
0123456789

PREMIER

ABCDEFGHIJKLMNOPQRSTUVWXYZ
0123456789

TIFFANY

ABCDEFGHIJKLMNOPQRSTUVWXYZ
0123456789

FULL BLOCK

ABCDEFGHIJKLMNOPQRSTUVWXYZ
0123456789

UNDENIABLE

ABCDEFGHIJKLMNOPQRSTUVWXYZ
0123456789

FALCON

ABCDEFGHIJKLMNOPQRSTUVWXYZ
0123456789

PLAIN BLOCK

ABCDEFGHIJKLMNOPQRSTUVWXYZ

ATHLETIC SCRIPT

ABCDEFGHIJKLMNOPQRSTUVWXYZ
abcdefghijklmnopqrstuvwxyz

CLASSIC SCRIPT

ABCDEFGHIJKLMNOPQRSTUVWXYZ
abcdefghijklmnopqrstuvwxyz

NOTE:

- Gameday Select Package Pricing now includes all of the above listed fonts
- Dropped fonts available for fill-in orders only

STOCK DECORATION OPTIONS

SCREEN PRINT	ONE COLOR	TWO COLORS
Team Name	\$5.50	\$10.50
Team Mascot/Logo	\$5.50	\$10.50
Front + Back Numbers	\$12.00	\$17.00

TWILL	ONE COLOR	TWO COLORS
Team Name	\$22.00	\$27.00
Front + Back Numbers	\$27.00	\$32.00
Player Names	\$22.00	
ArmourFuse Twill Patch (Max 3"x3")	\$11.00	\$11.00

EMBROIDERY	ONE COLOR	TWO COLORS
Team Name (up to 2")	\$10.00	\$10.00

see page 95 for Embroidered Mascot/Logo pricing

ADDITIONAL STOCK OPTIONS & NOTES

- Player Numbers Per Location = 1/2 of above
- "Front + Back Numbers" pricing
- Player Name Directly On Jersey Only (No Nameplates)
- ArmourFuse Twill = Twill Pricing +\$10
- Add Tail to Script Font Twill Team Name +\$10
- Add Embroidery to Twill Tail +\$10
- Non-Stock designs and lettering may require additional charge at Under Armour's discretion (call for quote)

LETTERING ARRANGEMENTS

STRAIGHT

ARCHED

BRIDGED

VERTICAL ARCH

Athletic Script

Classic Script

GAMEDAY SELECT OPTIONS

3/16" 1-COLOR PIPE				
				
WHITE	BASEBALL GRAY	BLACK	MIDNIGHT NAVY	UNIVERSITY RED
				
ROYAL	FOREST GREEN	MAROON	PURPLE	DARK ORANGE
				
STEELTOWN GOLD	TEAM KELLY GREEN	CARDINAL	TEAM VEGAS GOLD	CAROLINA BLUE
				
CLEVELAND BROWN	TEAL	TEXAS ORANGE	SILVER GRAY	GRAPHITE

1/2" 3-COLOR BRAID		
1	2	3

ANY COMBO
OF PIPE COLORS

INCLUDED PIPE/BRAID

1. Jersey Front

Around Neck
OR
Around Placket
OR
None

2. Jersey Sleeves

Sleeve Ends
OR
None

3. Pants

Down Side
OR
None

OPTIONAL PANT ALTERATIONS

	LIST PRICE
Reduce Knicker Inseam 2" and Hem w/ Elastic	\$0.00
Increase Knicker Inseam 2" and Hem w/ Elastic	\$0.00
Increase Knicker Inseam 4" and Hem w/ Elastic*	\$15.00
Reduce Relaxed/Tapered Inseam 2" and Hem	\$0.00
Increase Relaxed/Tapered Inseam 2" and Hem	\$0.00
Increase Relaxed/Tapered Inseam 4" and Hem*	\$15.00

OPTIONAL ARMOURFUSE™ TWILL (L X H)

	LIST PRICE
Custom Font Team Name (Max. 14" x 4.25")	\$10.00
Custom Left Chest Team Logo (Max. 4" x 5")	\$15.00
Custom Sleeve Patch (Max. 4" x 4")	\$15.00
Custom Back Neck Patch (Max. 3" x 2")	\$15.00
Player Name (On Nameplate)	\$40.00
Player Name Directly on Jersey (No Nameplate)	\$30.00
Blank Nameplate	\$7.00
Add Tail to Script Font Team Name	\$20.00
Add Text to Script Font Tail	\$20.00

Note: Vector art must be provided for custom Armourfuse™ Twill or additional artwork charges will apply

*Available on Men's styles only






















STOCK OPTIONS

3/16" 1-COLOR PIPE	LIST PRICE
Around Placket (UBJ316P)	\$17.00
Sleeve Ends (UBJ316S)	\$17.00
Down Side (UBP316D)	\$17.00

1/2" 3-COLOR BRAID	LIST PRICE
Around Placket (UBJ12AP)	\$17.00
Around Neck (UBJ12NB)	\$17.00
Sleeve Ends (UBJ12SE)	\$17.00
Down Sides (UBP12DS)	\$17.00

NOTE: Additional leadtime should be expected for orders including piping, braiding and/or hemming. Please contact a UA Sale Rep for updates.

PIPE & BRAID AVAILABLE COLORS

Pipe 3/16"						
	WHITE	BLACK	MIDNIGHT NAVY	UNIVERSITY RED	ROYAL	FOREST GREEN
Braid 1/2"						
	MAROON	PURPLE	DARK ORANGE	CARDINAL	TEAM VEGAS GOLD	
						
	BK/WH/BK	NA/WH/NA	SC/WH/SC	RO/WH/RO		
						
	DG/WH/DG	MA/WH/MA	PU/WH/PY	OR/WH/OR		
						
	CA/WH/CA	VG/WH/VG				

ADDITIONAL LENGTH OPTIONS (ARMOURFUSE ONLY - \$10 FOR ALL -/+ OPTIONS)

BASEBALL/SOFTBALL

TYPE	ADJUSTMENT	CODE
JERSEYS	Add 2" body length	UIX2BDY
	Add 4" body length	UIX4BDY
PANTS	Subtract 2" from inseam	UISHTN2
	Add 2" to inseam length	UIX2INS
	Add 4" to inseam length	UIX4INS

FOOTBALL

TYPE	ADJUSTMENT	CODE
JERSEYS	Shorten to waist length	
PANTS	Add 2" to inseam length	UIX2INS

LACROSSE/ FIELD HOCKEY

TYPE	ADJUSTMENT	CODE
JERSEYS	Add 2" body length	UIX2BDY
SHORTS	Subtract 1" from inseam	UISHTN1
	Subtract 2" from inseam	UISHTN2
	Add 1" to inseam length	UIX1INS
	Add 2" to inseam length	UIX2INS
KILTS	Add 1" to inseam length	UIX1INS
	Add 2" to inseam length	UIX2INS

BASKETBALL

TYPE	ADJUSTMENT	CODE
JERSEYS	Add 2" body length	UIX2BDY
	Add 4" body length	UIX4BDY
	Add 6" body length	UIX6BDY
SHORTS	Subtract 1" from inseam	UISHTN1
	Add 1" to inseam length	UIX1INS
	Add 2" to inseam length	UIX2INS
	Add 3" to inseam length	UIX3INS
SHOOTING SHIRTS	Add 2" body, 1" sleeve	UIX2B1S
	Add 4" body, 2" sleeve	UIX4B2S
	Add 6" body, 3" sleeve	UIX6B3S

SOCCER

TYPE	ADJUSTMENT	CODE
JERSEYS	Add 2" body length	UIX2BDY
SHORTS	Subtract 1" from inseam	UISHTN1
	Subtract 2" from inseam	UISHTN2
	Add 1" to inseam length	UIX1INS
	Add 2" to inseam length	UIX2INS

TRACK & FIELD

TYPE	ADJUSTMENT	CODE
JERSEYS	Add 2" body length	UIX2BDY
LOOSE SHORTS*	Subtract 1" from inseam	UISHTN1
	Add 1" to inseam length	UIX1INS

*UTS2M & UITS2W ONLY

TRAINING

TYPE	ADJUSTMENT	CODE
JERSEYS	Add 2" body length	UIX2BDY
	Add 4" body length	UIX4BDY
	Add 6" body length	UIX6BDY
SHORTS	Subtract 1" from inseam	UISHTN1
	Subtract 2" from inseam	UISHTN2
	Add 1" to inseam length	UIX1INS
	Add 2" to inseam length	UIX2INS
	Add 3" to inseam length	UIX3INS

VOLLEYBALL

TYPE	ADJUSTMENT	CODE
JERSEYS	Add 2" body length	UIX2BDY
SHORTS	Subtract 1" from inseam	UISHTN1
	Subtract 2" from inseam	UISHTN2

EMBROIDERY

MASCOTS (STOCK ONLY) LIST PRICE

Mascot	\$11.00
Mascot with One Line	\$12.00
Mascot with Two Lines	\$13.00
American Flag	\$11.00
Small/Homeplate	\$6.00

DIGITIZING (STOCK AND ARMOURFUSE ONLY) LIST PRICE

Stock Designs and Lettering	\$180.00
Custom Logos	Call for Quote

• Prices are based upon size of designs, not the number of colors. Prices are subject to change if design exceeds specifications.

• Dimensions are maximum space - unless specifically noted best judgement will be used.

• Letter styles are available horizontal or arched.

• No digitizing charge for team names.

• Flag size up to 2" by 3" (bigger area - call for quote)

• Minimum order charges apply for embroidery



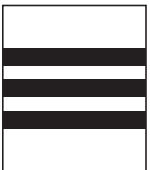






• All designs require an additional digitizing charge, except:

- 1) Digitized designs supplied on a disk
- 2) Digitized design is a re-order of an existing design

STANDARD SLEEVE PRINT STRIPES

*OPTIONS - Code numbers listed below stripe patterns

*Stripes may be adjusted to fit smaller garments and not measure exactly as shown.

	1/2" STRIPE 1/2" SPACE 2" STRIPE 1/2" SPACE 1/2" STRIPE		1/2" STRIPE 1/2" SPACE 2" STRIPE 1/2" SPACE 1/2" STRIPE		3/4" STRIPE 1/2" SPACE 3/4" STRIPE 1/2" SPACE 3/4" STRIPE		3/4" STRIPE 1/2" SPACE 3/4" STRIPE 1/2" SPACE 3/4" STRIPE		3/4" STRIPE 1/4" SPACE 3/4" STRIPE 1/4" SPACE 3/4" STRIPE 1/4" SPACE 3/4" STRIPE
01		02		03		04		05	
	2" STRIPE 2" STRIPE		1/4" STRIPE 1" STRIPE 1/4" STRIPE 1" SPACE 1/4" STRIPE 1" STRIPE 1/4" STRIPE 1" SPACE		1" STRIPE 1" STRIPE 1" STRIPE 1" SPACE 1" STRIPE 1" STRIPE		1 1/2" STRIPE 1 1/2" STRIPE		
06		07		08		09			

ARMOURFUSE® GRAPHIC OPTIONS



TEAM TRAINING



STYLE NAME	GENDER	STYLE#	UA ECLIPSE	UA VITAL	SCOUT
HOODY	MEN'S	UJGSLHM	X	X	X
	WOMEN'S	UJGSLHW	X	X	X
	YOUTH	UJGSLHY	X	X	X
1/4 ZIP	MEN'S	UJGQZPM	X	X	X
	WOMEN'S	UJGHZPW	X	X	X
LOOSE SHORTSLEEVE	MEN'S	UJGSIM	X	X	X
	WOMEN'S	UJGSIW	X	X	X
	YOUTH	UJGSIY	X	X	X
LOOSE LONGSLEEVE	MEN'S	UJGLIM	X	X	X
	WOMEN'S	UJGLIW	X	X	X
	YOUTH	UJGLIY	X	X	X
COMPRESSION SLEEVELESS	MEN'S	UJGCBL	X	X	X
COMPRESSION SHORTSLEEVE	MEN'S	UJGTBL	X	X	X
COMPRESSION 1/2 SLEEVE	MEN'S	UJGHBL	X	X	X
COMPRESSION LONGSLEEVE	MEN'S	UJGCLS	X	X	X
POCKETED SHORT	MEN'S	UJGS2PM	X	X	X
	WOMEN'S	UJGS2PW	X	X	X
	YOUTH	UJGS2PY	X	X	X
NON-POCKETED SHORT	MEN'S	UJGS2M	X	X	X
	WOMEN'S	UJGS2W	X	X	X
	YOUTH	UJGS2Y	X	X	X



GAMEDAY SELECT TEAM UNIFORMS
ORDERING INFORMATION AND CUSTOMER SERVICE:
1-800-474-6118
www.uacustomuniforms.com



ARMOURFUSE TEAM UNIFORMS
ORDERING INFORMATION AND CUSTOMER SERVICE:
1-800-594-9082
www.underarmourteamuniforms.com



UA NEXT
ORDERING INFORMATION AND CUSTOMER SERVICE:
1-800-594-9082
www.underarmourteamuniforms.com



STOCK TEAM UNIFORMS
ORDERING INFORMATION AND CUSTOMER SERVICE:
1-800-594-9082
www.underarmourteamuniforms.com

ORDERING INFORMATION

Guarantee:

The materials and workmanship of our garments are guaranteed when given fair treatment and used under normal conditions.

Color Matching:

Scientifically, it is not possible to achieve a perfect color match from one dye lot to another. Therefore, we cannot guarantee a perfect match from order to order or from one fabric to another.

Color Abbreviation Key:

The following abbreviations may be used when ordering merchandise.

BG Baseball Gray	EB Electric Blue	PI Pink	SI Silver Grey
BK Black	GP Graphite	PK Powderkeg Blue	TI Taxi
BR Brown	KE Team Kelly Green	PO Poison	TE Teal
CA Cardinal	LG Steeltown Gold	PU Purple	TO Texas Orange
CB Carolina Blue	MA Maroon	RO Royal	TP Tropic Pink
CP Capri	NA Midnight Navy	RU Gold Rush	VG Team Vegas Gold
DG Forest Green	OR Dark Orange	SC University Red	WH White

Price Policy:

All catalog prices are list or suggested retail. Prices are subject to change without notice. Merchandise will be invoiced based on the prices in effect at the time the order is placed.

Terms:

Prices are FOB shipping point. Payment is due Net 30.

Minimum Order Charges:

A handling charge of \$10.00 will be added to orders of less than \$150.00 list. Custom and GamedaySelect fill-in minimum order is 6 units per style and color. A 100% surcharge will be applied to orders of 1-2 units, and a 50% surcharge for orders of 3-5 units.

Lettered Orders for COD Shipment:

A 50% deposit is required on all lettered orders calling for COD shipment.

Delivery:

Shipments will always be made by the fastest, least expensive means possible. The customer will assume any additional expense required to expedite delivery.

Order Cancellations:

Cancellations must be received at least one day prior to the ship date. Special order garments cannot be cancelled after they have been cut. Lettered garments cannot be cancelled after they have been printed or sewn.

Returns:

Claims must be reported to our office within 10 working days of merchandise receipt. Returns cannot be made after 30 days of the invoice date. All returns for plain merchandise must be clearly marked with an authorization number or label obtained from our office. All returns for lettered merchandise must be clearly marked "LETTERING." When requesting an authorization label, the following information is required: Reason for return, Invoice #, Style #, Color, Size/Quantity. An authorization label will then be sent to you to prepare the merchandise for return shipment. We reserve the right to repair, replace or issue credit for any merchandise returned. A 15% restocking fee and shipping charges will be charged for merchandise returned that is either not damaged or the damage is determined not to be our fault. All worn garments must be properly laundered prior to return or they will not be accepted.

All custom and custom-stock uniforms may not be returned under any circumstances if delivered properly.

Shortages:

All claims must be made within 10 days of the invoice date.

New Accounts:

All new accounts must be opened through your local sales representative. New accounts that do not have a Dunn and Bradstreet rating will be shipped COD until a credit line has been established.

Samples:

Samples will be entered and billed as a regular order. Samples cannot be returned without prior approval from our office.

Imprint Orders:

All imprint orders must be emailed, mailed or faxed in with detailed instructions on UA order forms. Imprint orders will not be taken by phone. Once garments have been lettered, the order cannot be cancelled or returned.

Under Armour will not be responsible for any items not checked for order accuracy or sizing before being sent to a printer / screener. We will not be responsible for shrinkage, defects, or damages caused during the imprinting of our garments by sources other than our own lettering department. Screenprinting sublimated uniforms can cause color migration. We do not recommend screenprinting on sublimated garments.

Photography is the property of Under Armour and is not to be used without written authorization.

UNIFORM CARE INSTRUCTIONS

To enhance the appearance and extend the life of your uniforms, Under Armour recommends that you follow these cleaning and storing procedures:

DO NOT DRY CLEAN

DO NOT WASH IN HOT WATER

DO NOT USE CHLORINE BLEACH

DO NOT USE FABRIC SOFTENER

DO NOT WASH WHITES AND COLORS TOGETHER

DO NOT OVERLOAD THE WASHING MACHINE

DO NOT MACHINE DRY ON HIGH HEAT

DO NOT LEAVE WET OR DAMP GARMENTS IN YOUR TRAVEL BAG, IN A PILE WITH OTHER CLOTHING OR IN WASHING MACHINE

- Pre wash uniform prior to use.
- Uniforms should always be laundered immediately after wearing. However, if this is not possible, rinse garments and hang individually on rust-proof hangers. (Moisture may cause color migration of acid dyes so we advise separating wet or damp uniforms.)
- Belts and any other contrasting color items should be washed separately from the garment.
- It is always advisable to test wash a single uniform according to directions before washing an entire load.
- Wash and rinse all garments in warm water (approx. 110°) with mild detergent. Remove promptly after wash cycle.
- For optimum results, hang garments (especially those with elastane) to dry. If you cannot hang dry, machine dry on the lowest setting. Turn jerseys inside out before machine drying. Remove items from dryer immediately upon completion of the cycle. (Excessive heat can cause fabric shrinkage, discoloration, and cracking and peeling of vinyl plastisol lettering inks.)
- Make sure uniforms are completely dry before storing. Store in a dry area to prevent mildew. Protect them from sunlight and fluorescent light to prevent yellowing.

PLEASE NOTE: Under Armour will not be responsible for uniforms that are damaged due to improper care and maintenance. Failure to follow our specified care instructions will void all guarantees.

UNIFORM FILL-IN LIFECYCLE

LAST SHOWN IN CATALOG	LAST FILL-IN SEASON	LAST FILL-IN SHIP
FA'20	FA'23	12/15/2023
WI'20	WI'23	3/15/2024
SP'21	SP'24	6/15/2024
FA'21	FA'24	12/15/2024
WI'21	WI'24	3/15/2025
SP'22	SP'25	6/15/2025
FA'22	FA'25	12/15/2025
WI'22	WI'25	3/15/2026
SP'23	SP'26	6/15/2026
FA'23	FA'26	12/15/2026
WI'23	WI'26	3/15/2027
SP'24	SP'27	6/15/2027

COMPRESSION

FITTED

LOOSE

MEN'S



Ultra-tight, second skin fit that keeps you locked in & makes you feel like you can do anything.



A slimmer, athletic cut that allows total mobility but eliminates the bulk of extra fabric.



Fuller cut for complete comfort, total range of motion & greater breathability.

	US SIZE	CHEST (IN)	WAIST (IN)	HIP (IN)
SM	26-28	34-37	29-31	34-36
MD	30-32	37-41	31-34	36-39
LG	34-36	41-44	34-37	39-42
XL	38-40	44-48	37-41	42-46
2XL	42-44	48-52	41-45.5	46-50
3XL	46-48	52-56	45.5-50	50-54
4XL	50-52	56-60	50-54.5	54-58
5XL	54-56	60-64	54.5-59	58-62

HOW TO MEASURE



CHEST: Place the tape measure under your arms at the fullest part of your chest, wrap around your body until your fingers meet and mark the measurement

WAIST: Measure around your natural waistline – right above your hips. Be careful not to squeeze too tight to allow a little give.

HIPS: With your feet together, measure around the fullest part of your hips to ensure you'll have enough room to move comfortably.

BOYS

FITTED

LOOSE



A slimmer, athletic cut that allows total mobility but eliminates the bulk of extra fabric.



Fuller cut for complete comfort, total range of motion & greater breathability.

	US SIZE	CHEST (IN)	WAIST (IN)	HIP (IN)
YXS	7	25-26	23-24	26-27
YSM	8	26-27	24-25	27-28
YMD	10-12	27-29	25-27	28-31
YLG	14-16	29-32.5	27-30	31-34
YXL	18-20	32.5-35.5	30-33	34-37

HOW TO MEASURE



CHEST: Place the tape measure under your arms at the fullest part of your chest, wrap around your body until your fingers meet and mark the measurement

WAIST: Measure around your natural waistline – right above your hips. Be careful not to squeeze too tight to allow a little give.

HIPS: With your feet together, measure around the fullest part of your hips to ensure you'll have enough room to move comfortably.

WOMEN'S

COMPRESSION



Ultra-tight, second skin fit that keeps you locked in & makes you feel like you can do anything.

FITTED



Sits close to the skin for a streamlined fit without the squeeze of compression.

LOOSE



Fuller, more generous cut for enhanced range of motion & an effortlessly relaxed fit.

	US SIZE	CHEST (IN)	WAIST (IN)	HIP (IN)
XS	0-2	32.5-33.5	25.5-27	34.5-36
S	4-6	33.5-36	27-29	36-38
M	8-10	36-38	29-31	38-40
L	12-14	38-41	31-34	40-43
XL	16	41-44	34-37	43-46
2XL	18	44-47	37-40	46-49
3XL	20	47-50	40-43	49-52
4XL	22	50-53	43-46	52-55

HOW TO MEASURE



CHEST: Place the tape measure under your arms at the fullest part of your chest, wrap around your body until your fingers meet and mark the measurement

WAIST: Measure around your natural waistline – right above your hips. Be careful not to squeeze too tight to allow a little give.

HIPS: With your feet together, measure around the fullest part of your hips to ensure you'll have enough room to move comfortably.

GIRLS

FITTED



Sits close to the skin for a streamlined fit without the squeeze of compression.

LOOSE



Fuller, more generous cut for enhanced range of motion & an effortlessly relaxed fit.

	US SIZE	CHEST (IN)	WAIST (IN)	HIP (IN)
YXS	7	25-26.5	23-24	26-28
YSM	8	26.5-27.5	24-24.5	28-29
YMD	10-12	27.5-30.5	24.5-26.5	29-32.5
YLG	14-16	30.5-34	26.5-30.5	32.5-36.5
YXL	18-20	34-36	30.5-32.5	36.5-38.5

HOW TO MEASURE



CHEST: Place the tape measure under your arms at the fullest part of your chest, wrap around your body until your fingers meet and mark the measurement

WAIST: Measure around your natural waistline – right above your hips. Be careful not to squeeze too tight to allow a little give.

HIPS: With your feet together, measure around the fullest part of your hips to ensure you'll have enough room to move comfortably.

WEST

PAT BAUER
SR. REGIONAL MANAGER
410.299.3798
pbauer@underarmour.com
WA // OR // MT //
ID // AK // WY

JEFF UTTZ
626.484.3496
jeffu@underarmour.com
CA // NV // HI // AZ // UT

DAN LAABES
602.882.7241
dlaabes@underarmour.com
AZ // NM // West & South TX

HALEY GILLMORE
303.562.6053
hgillmore@underarmour.com
East TX // OK // CO

FRANK WEBER
618.540.3955
fweber@underarmour.com
IL // MO // IA // MN //
NE // KS // ND // SD //

EAST

FRANK NUNAN
SR. REGIONAL MANAGER
484.576.9777
fnunan@underarmour.com
DE // NJ // Philadelphia area

MONTE GIBBS
662.801.3039
mgibbs@underarmour.com
TN // LA // AL //
MS // AR // KY

DAN WILLIAMS
352.672.1676
dwilliams@underarmour.com
NC // SC // GA // FL

TONY DONOFRIO
419.356.9742
tonydl@underarmour.com
WI // MI // IN // OH // WV

GARY POWERS
410.746.3790
gpowers@underarmour.com
MD // DC // VA // Eastern PA

BOB BARTLETT
315.380.6505
bobb@underarmour.com
NY // Western PA

JAY KELLEHER
443.615.0462
jkelleher@underarmour.com
New England

COLLEGIATE

TOMMY AMICO
951.808.0367
tamico@underarmour.com
WEST

TODD LOCKLEAR
410.454.6572
tlocklear@underarmour.com
EAST

CHRIS PORTS
443.220.1009
cports@underarmour.com
MID ATLANTIC

BELLA GARONE
631.307.0009
isabella.garone@underarmour.com
NORTHEAST

ALEX BRUEGGEMANN
410.652.4337
abrueggemann@underarmour.com
SOUTH

LICENSEES

FOUNDER SPORT GROUP
Stock & Armourfuse Uniforms
www.underarmourteamuniforms.com
888.871.0990
UASstatus@foundersportgroup.com

POWERS ATHLETIC
Custom Uniforms
www.uacustomuniforms.com
800.474.6118
customerservice@powersathletic.com



TEL: 1.888.828.1547 / B2B: ARMOURHOUSE.UNDERARMOUR.COM

COLLEGIATE

TEAMSPTS COLLEGIATE / TEAMSPTS.COLLEGIATE@UNDERARMOUR.COM

EAST

TEAM SPORTS SE / TEAMSPORTSSE@UNDERARMOUR.COM
TEAM SPORTS NE / TEAMSPORTSNE@UNDERARMOUR.COM

WEST

TEAM SPORTS WC / TEAMSPORTSWC@UNDERARMOUR.COM
TEAM SPORTS SW / TEAMSPORTSSW@UNDERARMOUR.COM

ALL TEAM SPORTS ORDERS AND QUESTIONS PLEASE USE THE FOLLOWING:

1.888.828.1547
Corporate Headquarters
1020 Hull Street
Baltimore, MD 21230

CORPORATE OFFICE HOURS OF OPERATION

Monday through Friday, 8:30am – 5:30pm, EST.

UNDER ARMOUR® B2B – ONLINE ORDERING

armourhouse.underarmour.com

- 24/7 access to check inventory and place orders
- Ability to track orders and shipments
- Priority product allocation
- Faster processing time

UNDER ARMOUR® B2B – SUPPORT

B2B_support@underarmour.com

UNDER ARMOUR® RETURN POLICY

Under Armour® stands behind its gear and EXPECTS nothing less than perfection. If you have received a defective product, an incorrect size, or an incorrect order, please contact us immediately for a return authorization number so that we can quickly process your return and ensure your satisfaction.

ALL RETURNS MUST BE COMPLETED WITHIN 30 DAYS OF RECEIPT AND MUST BE IN REASONABLE CONDITION. ALL RETURNS MUST HAVE THE RA# CLEARLY MARKED ON THE CARTON. ALL RETURNS ARE SUBJECT TO A 15% RE-STOCKING FEE.

Should you need to return or exchange an item, you MUST include your RA#, a copy of your invoice, and an explanation in writing as to why you are returning the item. Send your return to the marked address on your pack list. If you are exchanging merchandise, you are responsible for the cost of returning the product. Original shipping costs are non-refundable. All returned merchandise must be received in new, resalable condition.

ODH RETURNS:

Under Armour Returns
RA#
7030 Tradepoint Ave
Dock Door 69
Sparrows Point, MD 21219

RIALTO RETURNS:

Under Armour Returns
RA#
2510 W Walnut Ave
Rialto, CA 92376

NASHVILLE RETURNS:

Under Armour Returns
RA#
13 Athlete's Way
Mt Juliet, TN 37122

UNDER ARMOUR® CANCELLATION POLICY

Any request for cancellation of an order for UA products must be made, in writing, through the customer's UA Sales Representative. A request to cancel an order must be made more than 30 days before the customer's original desired ship date. All cancellations are subject to UA approval.

ALL PRICES SET FORTH HEREIN ARE SUBJECT TO CHANGE WITHOUT NOTICE.

© 2023 Under Armour®. All rights reserved. All trademarks, images, photographs, logos, and graphics are owned or controlled by Under Armour®.

Confidential and business proprietary information for internal Under Armour®, Inc. use only. Reproduction is strictly prohibited.

UNDER ARMOUR® PERFORMANCE
SPRING 2024