



johnnie-O

CORPORATE CATALOG
2024

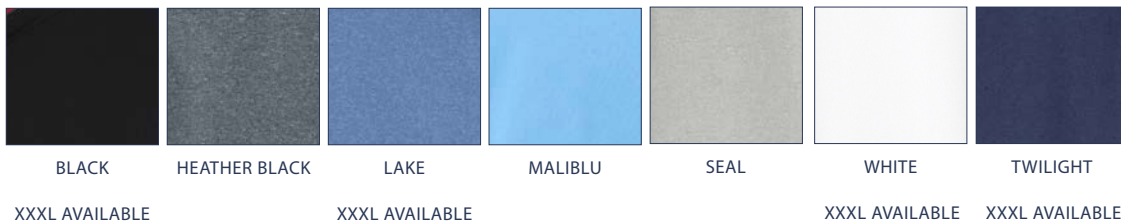
MEN

JMPO1710 (BIRDIE)

PREP-FORMANCE JERSEY 3 BUTTON POLO - SIDE VENTS
LEFT CHEST OPEN - JO LOGO CENTER BACK YOKE
93% POLYESTER / 7% SPANDEX JERSEY MOISTURE WICKING
SIZES S - XXL
4498



WOMEN'S COMPANION PIECE:
JWPO100020 (SADIE PERFORMANCE POLO)
PAGE 15



MEN

JMPO4690 (HURON)

PREP-PERFORMANCE JERSEY 3 BUTTON POLO - SIDE VENTS
LEFT CHEST OPEN - EMBROIDERED LOGO CENTER BACK YOKE
88% POLYESTER / 12% SPANDEX 167GSM JERSEY MOISTURE WICKING
SIZES S-XXL
4498



CRIMSON

GREEN1

GULF BLUE

HEATHER BLACK

MAROON1

MAROON3



MIDNIGHT NAVY2

ORANGE3

PURPLE1

RED1

ROYAL2

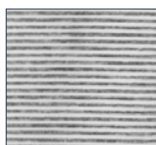
LIGHT GRAY

WHITE

MEN

JMPO2010 (LYNDON)

PREP-FORMANCE JERSEY 3 BUTTON POLO - SIDE VENTS
LEFT CHEST OPEN - JO LOGO CENTER BACK YOKE
93% POLYESTER / 7% SPANDEX JERSEY MOISTURE WICKING
SIZES S - XXL
4498

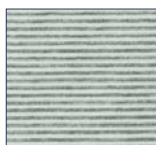


CHARCOAL

XXXL AVAILABLE



CRIMSON

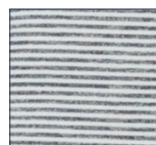


GREEN1



GULF BLUE

XXXL AVAILABLE



HEATHER TWILIGHT

XXXL AVAILABLE



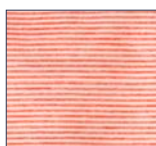
MAROON1



MAROON3



METEOR



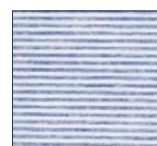
ORANGE3



PURPLE1



RED1



ROYAL2

XXXL AVAILABLE

MEN

JMPL1290 (SWING)

PREP-FORMANCE JERSEY 3 BUTTON LONG SLEEVE POLO - SIDE VENTS
LEFT CHEST OPEN - JO LOGO CENTER BACK YOKE
88% POLYESTER / 12% SPANDEX JERSEY MOISTURE WICKING
SIZES S - XXL
53118



LIGHT GRAY



LAKE



WHITE

MEN

JMWL5800 (SIGNOR)

LONG SLEEVE WOVEN SHIRT - BUTTON DOWN COLLAR
FRENCH FRONT PLACKET - SEAMLESS POCKET
28% POLYESTER / 28% BAMBOO / 40% NYLON / 4% SPANDEX
SIZES S - XXL
49128



NAVY

MEN

JMVT1680 (DAVE)

1/4 ZIP PREP-FORMANCE PULLOVER VEST - CONTRAST INTERIOR YOKE - ZIPPER GARAGE DETAIL -
SIGNATURE PULLER - RAISED SILICONE LOGO CENTER BACK YOKE
94% POLYESTER / 6% SPANDEX MELANGE
SIZES S - XXL
47118



WOMEN'S COMPANION PIECE:
JWVT1680 (DAVE)
PAGE 22



BLACK

NAVY

QUARRY

XXXL AVAILABLE

XXXL AVAILABLE

XXXL AVAILABLE

MEN

JMVT1370 (CROSSWIND)

LIGHTWEIGHT WIND RESISTANT DOUBLE ZIP PERFORMANCE VEST -
ZIP OUT HOOD IN COLLAR - CONTRAST ZIPPERS & LINING - WELT SIDE
- POCKETS WITH MAGNETIC CLOSURE - BUNGEE PULLERS - RAISED
SILICONE LOGO ON CENTER BACK YOKE
93% POLYESTER / 7% SPANDEX CONTRAST LINING
SIZES: S - XXL
69169



BLACK

SEAL

WHITE

WAKE

MEN

JMLT2620 (TALON)

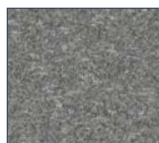
ULTRA - LIGHTWEIGHT HEATHER LONG SLEEVE HOODED TEE
JOHNNIE-O FLAG LABEL ON LEFT TAIL - SPLIT TAIL
88% POLYESETER / 12% SPANDEX JERSEY MOISTURE WICKING
SIZES S-XXL
49118



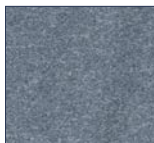
MEN

JMKO1420 (FLEX)

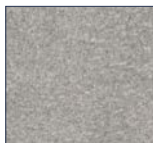
ULTRA LIGHTWEIGHT 4 WAY STRETCH QUARTER ZIP PULLOVER
SIGNATURE PULLER - RAISED SILICONE LOGO CENTER BACK NECK
92% POLYESTER / 8% SPANDEX - MELANGE WITH WICKING -
UPF 50 SUN PROTECTION
SIZES S-XXL
4498



CHARCOAL



HEATHER NAVY



METEOR



LAGUNA BLUE

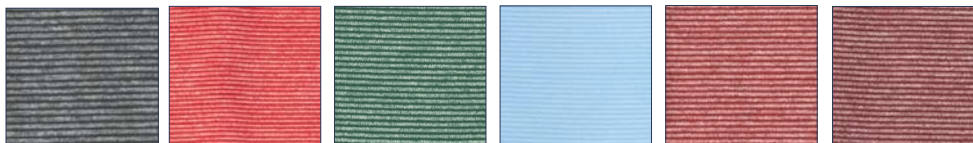
XXXL AVAILABLE

XXXL AVAILABLE

MEN

JMKO1890 (VAUGHN)

ULTRA LIGHTWEIGHT 4 WAY STRETCH FINE STRIPPED QUARTER ZIP PULLOVER
SIGNATURE PULLER - RAISED SILICONE LOGO CENTER BACK NECK
92% POLYESTER / 8% SPANDEX - MELANGE WITH WICKING -
UPF 50 SUN PROTECTION
SIZES S-XXL
47118



BLACK

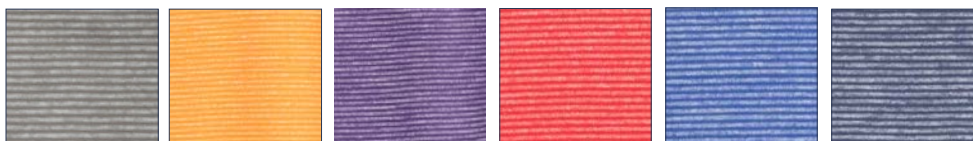
CRIMSON

GREEN1

GULF BLUE

MAROON1

MAROON3



METEOR

ORANGE3

PURPLE1

RED1

ROYAL2

TWILIGHT

XXXL AVAILABLE

XXXL AVAILABLE

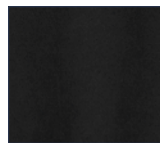
MEN

JMKO2020 (DIAZ)

LIGHTWEIGHT QUARTER ZIP PULLOVER SIGNATURE PULLER
RAISED LOGO CENTER BACK
92% POLY / 8% SPANDEX MELANGE WITH WICKING - UPF 50 SUN
PROTECTION
SIZES S - XXL
50118



WOMEN'S COMPANION PIECE:
JWKO2020 (DIAZ)
PAGE 21



BLACK



NAVY



QUARRY



WHITE

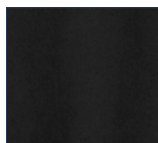
MEN

JMKO3620 (FREEBORNE)

PEACHED LIGHTWEIGHT 4 WAY STRETCH BASE LAYER QUARTER ZIP REVERSED
COVERSTITCH DETAIL ON SHOULDER - SIGNATURE PULLER - RAISED
SILICONE LOGO ON CENTER BACK NECK
88% POLYESTER / 12% SPANDEX MELANGE WITH WICKING UPF 50 SUN PROTECTION
SIZES S - XXL
47118



WOMEN'S COMPANION PIECE:
JWKO3620 (FREEBORNE)
PAGE 20



BLACK



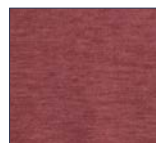
CRIMSON



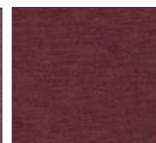
GREEN1



GULF BLUE



MAROON1



MAROON3

XXXL AVAILABLE



ORANGE3



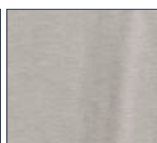
PURPLE1



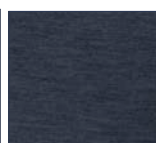
RED1



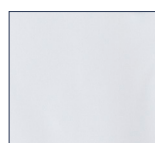
ROYAL2



SEAL



WAKE



WHITE

XXXL AVAILABLE

MEN

JMKO1460 (SULLY)

CONTRAST INSIDE COLLAR - TONAL LOGO EMBROIDERY CENTER BACK
NECK HEATHERED DOUBLE KNIT
65% COTTON / 21% LYOCELL / 14% POLYESTER
SIZES S-XXL
52128



WOMEN'S COMPANION PIECE:
JWKO1460 (SULLY)
PAGE 19



BLACK

HELIOS BLUE

LAGUNA BLUE

LIGHT GRAY

WHITE

XXXL AVAILABLE

XXXL AVAILABLE

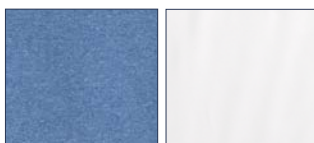
XXXL AVAILABLE



WOMEN

JWPO100020 (SADIE PERFORMANCE POLO)

LADIES SHORT SLEEVE PERFORMANCE POLO - JOHNNIE COLLAR
93% POLYESTER / 7% SPANDEX 167 GSM JERSEY MOISTURE WICKING
SIZES: XS - XL
4498



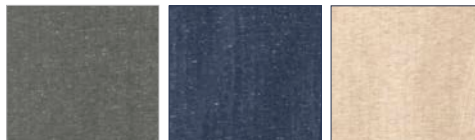
LAKE

WHITE

WOMEN

JWKO1020 (KENNEDY)

LIGHTWEIGHT 1/2 Zip - EMBROIDERED LOGO CENTER BACK NECK
60% COTTON / 40% POLYESTER
SIZES XS - XL
4398



CHARCOAL

NAVY

OATMEAL

WOMEN

JWKO1060 (BRITTANY)

CREW NECK SWEAT SHIRT - DROP HEM - TONAL JOHNNIE-O
LOGO ON CUFF
55% COTTON / 40% MODAL / 5% SPANDEX
SIZES: XS - XL
4498



CHARCOAL

CRIMSON

GREEN1

MAROON1

MAROON3



MIDNIGHT NAVY

OATMEAL

PURPLE1

RED1

ROYAL2

WOMEN

JWKO1040 (BLAKEY)

LIGHTWEIGHT FULL ZIP POLAR FLEECE - ON SEAM POCKETS
CONTRAST INSIDE NECK TAPE AND YOKE - RAISED SILICONE LOGO CENTER BACK NECK
94% POLYESTER / 6% SPANDEX
SIZES: XS - XL
45110



BLACK

OATMEAL

TWILIGHT



WOMEN

JWKO1460 (SULLY)

1/4 ZIP PULLOVER - CONTRAST INSIDE COLLAR - SIGNATURE LEATHER ZIPPER PULLER -
TONAL LOGO EMBROIDERED

CENTER BACK NECK

65% COTTON / 21% LYOCELL / 14% POLYESTER - HEATHERED DOUBLE KNIT

SIZES: XS - XL

52118



BLACK



HELIOS BLUE



LAGUNA BLUE



LIGHT GRAY



WHITE



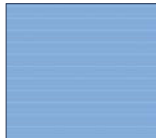
WOMEN

JWKO3620 (FREEBORNE)

SOFT LIGHTWEIGHT 4 WAY STRETCH BASE LAYER QUARTER ZIP
SIGNATURE PULLER - RAISED SILICONE LOGO CENTER BACK NECK
88% POLY / 12% SPANDEX MELANGE WITH WICKING -
UPF 50 SUN PROTECTION
SIZES: XS - XL
47118



BLACK



MALIBU



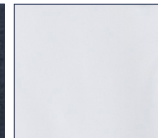
SEAL



TULIP



WAKE



WHITE



WOMEN

JWKO2020 (DIAZ)

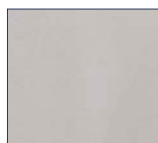
ULTRA LIGHTWEIGHT 4 WAY STRETCH QUARTER ZIP PULLOVER - SIGNATURE PULLER -
RAISED SILICONE LOGO CENTER BACK NECK
94% POLY / 6% SPANDEX MELANGE LIGHTWEIGHT FLEECE
SIZES: XS - XL
50118



BLACK



NAVY



QUARRY



WHITE



WOMEN

JWVT1680 (DAVE)

ULTRA LIGHTWEIGHT 4 WAY STRETCH QUARTER ZIP PULLOVER - SIGNATURE PULLER -
RAISED SILICONE LOGO CENTER BACK NECK
94% POLY / 6% SPANDEX MELANGE LIGHTWEIGHT FLEECE
SIZES: XS - XL
47118



BLACK

NAVY

QUARRY

ACCESSORIES

JMLG3030 (NYLON PACKABLE TOTE)

PRACTICAL MEETS FASHIONABLE WITH OUR WASHED NYLON PACKABLE TOTE BAG
THE PERFECT SIZE TO BRING EVERYTHING FROM YOUR TRAVELS HOME
FOLDS INTO A CONVENIENT SQUARE FOR EASY PACKABILITY

DIMENSIONS: 29" X 16" X 9"
100% WASHED NYLON FABRIC

ONE SIZE
69138



ACCESSORIES

JMLG3040 (WASHED NYLON DOPP KIT)

WASHED NYLON DOPP KIT WITH TWO SEPARATE COMPARTMENTS AND METAL ZIPPERS
DIMENSIONS: 9.5" X 4" X 4"
100% WASHED NYLON FABRIC
4498



ACCESSORIES

JMLG3050 (NYLON ELECTRONICS POUCH)

WASHED NYLON PACKABLE ELECTRONICS POUCH WITH
METAL ZIPPER - SIGNATURE 3 IN 1 MULTI CHARGING CABLE AND
WALL PLUG - FITS IPHONE, MACBOOK AND ANDROID DEVICES

DIMENSIONS: 8" X 2.5" X 3"
100% WASHED NYLON FABRIC
3268



ACCESSORIES

JMLG3150 (COLOR BLOCK WINE TOTE)

COLOR BLOCKED WASHED NYLON WINE TOTE WITH TWO INTERNAL POUCHES TO SAFELY TRANSPORT YOUR FAVORITE WINES - INTERNAL POCKET WITH METAL ZIP AND WOVEN COTTON STRAPS MAKES THIS PERFECT TOTE FOR THE BEACH OR PARTIES

DIMENSIONS: 13" X 14" X 4"
100% WASHED NYLON FABRIC

ONE SIZE
64128



ACCESSORIES

JMLG3210 (SHOE BAG)

MADE IN 100% WEATHER RESISTANT NYLON, FITS UP TO SIZE 14 SHOE. OUR BAG FEATURES A COMFORTABLE HANDLE, COLLASPABLE DIVIDER, RE-ENFORCED ZIP OUT OUTER FLAP, A FRONT ZIP POCKET, BUILT IN ICONIC RUBBERIZED LOGO AND ZIPPER PULLS, AND DUAL VENTALATION PORTS. DIMENSIONS = 14" x 9" x 5"

ONE SIZE

4998



ACCESSORIES

JMLG3010 (LARGE COLLAPSIBLE COOLER)

HEAVY DUTY RIPSTOP NYLON LAYERED OVER A HALF INCH OF INSULATION TO KEEP UP TO 24 DRINKS AND ICE COOL WHEREVER YOUR WEEKEND TAKES YOU - IT FEATURES DURABLE NYLON WOVEN WEBBING HANDLES, A WATERTIGHT REINFORCED BOTTOM AND ANTI-RUST ZIPPERS

A DETACHABLE SHOULDER STRAP ENABLES EASY PORTABILITY

DIMENSIONS: 15.75"X11.75"X11.75"

ONE SIZE

4498



ACCESSORIES

JMLG3070 (TOTE)

ZIP TOP BEACH TOTE, TRAVEL TOTE, AND ALL AROUND BAG - GREAT SIZE
THAT WILL BECOME THE DO ALL - GO TO BAG FOR TRAVEL AND
SUMMER ACTIVITIES TOTE MEASURES: 16.5" TALL
(25" INCLUDING THE HANDLES) X 24" WIDE X 8.5" DEEP
100% COTTON
ONE SIZE
4498



ACCESSORIES

JMLG2030 (CAMO ZIP TOP TOTE)

ZIP TOP BEACH TOTE, TRAVEL TOTE, AND ALL AROUND BAG - GREAT SIZE
THAT WILL BECOME THE DO ALL - GO TO BAG FOR TRAVEL AND
SUMMER ACTIVITIES TOTE MEASURES: 16.5" TALL
(25" INCLUDING THE HANDLES) X 24" WIDE X 8.5" DEEP
100% COTTON
ONE SIZE
64128



ACCESSORIES

JMAC1240 (JOHNNIE-O BOOM)

TAKE YOUR TUNES ANYWHERE WITH THE POWERFUL JOHNNIE-O BOOM PORTABLE SPEAKER WATERPROOF DESIGN THAT YOU CAN ENJOY IN RAIN OR SHINE - UP TO 12 HOURS OF PLAY TIME STAND IT VERTICAL OR HORIZONTAL - PAIRS WITH ANY BLUETOOTH DEVICE - 70 W - 20 KHZ RATED POWER 2X8WRMS
4498



ACCESSORIES

JMAC1360 (MINI BOOM)

THE BRAND NEW MINI-BOOM PORTABLE WIRELESS SPEAKER - WITH BUILT IN POWERFUL MAGNET AS WELL AS A CARABINER HOOK, YOU CAN MOUNT THIS LIGHTWEIGHT SPEAKER ON YOUR GOLF CART OR HANG IT FROM YOUR GOLF BAG, BACKPACK, OR BELT LOOP - WIRELESS BLUETOOTH CONNECTIVITY WORKS WITH ANY SMARTPHONE OR TABLET - WATERPROOF DESIGN THAT YOU CAN ENJOY IN RAIN OR SHINE

3978

